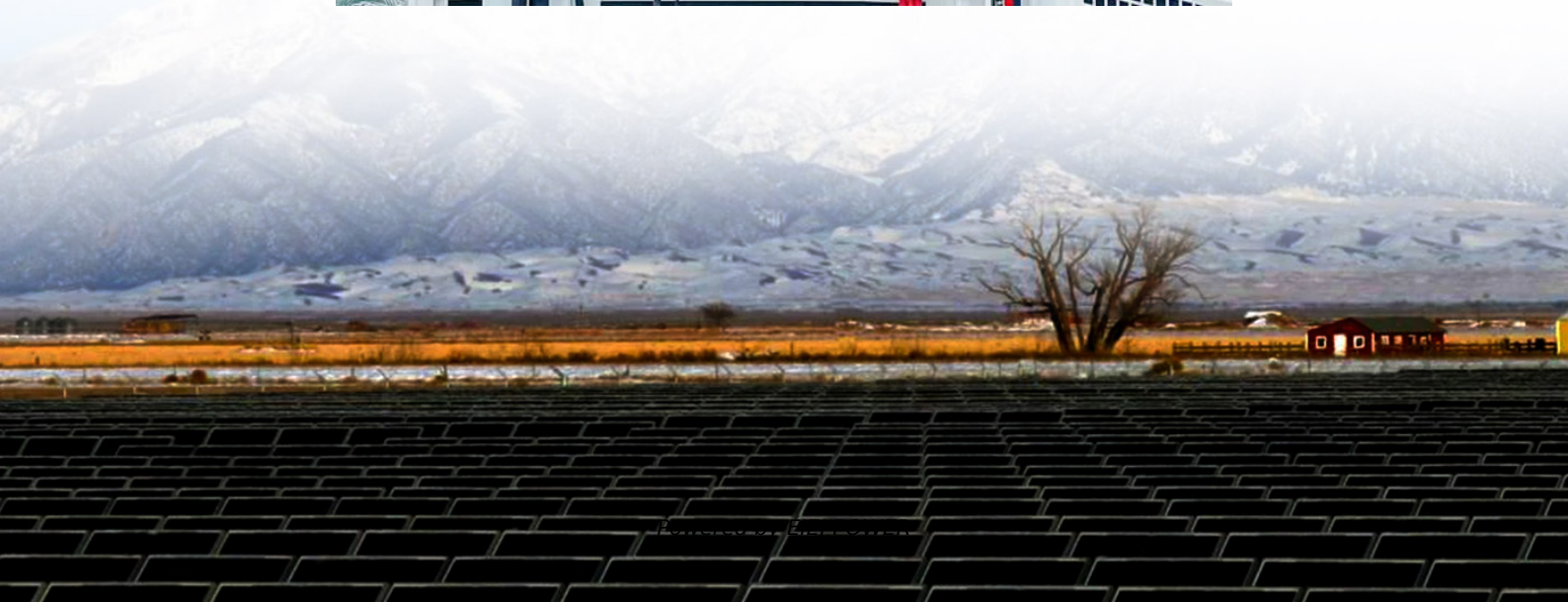


Wp solar panel size





Overview

What is a Wp rating for a solar panel?

These conditions include a solar irradiance of 1000 watts per square meter, a cell temperature of 25°C, and an air mass of 1.5. Wp provides a standardized way to compare the power output of different solar panels, regardless of their size or technology. The Wp rating is crucial in determining the potential energy output of a solar panel.

What are the dimensions of standard solar panels?

Most solar panels are about 1.5 inches thick. The typical classification of solar panel sizes is based on the solar cell size, but it's not very useful for most calculations.

What are the dimensions of a 96-cell solar panel?

96-cell solar panel size. The dimensions of 96-cell solar panels are 41.5 inches long and 63 inches wide. That's a 41.5×63 solar panel.

How much wattage does a solar panel take?

Solar panel sizes and wattage range from 250W to 450W, taking up 1.6 to 2 square metres per panel. One of the most important things to consider when getting solar panels for your home is the specific solar panel size and dimensions.



Wp solar panel size



[Solar Panel Size Guide , Best Panel Size for ...](#)

Jul 9, 2025 · Learn how to choose the ideal solar panel size for your home. Get expert tips, standard dimensions, and a size chart to simplify your ...

[The Ultimate Guide to Solar Panel Size, Weight & Wattage ...](#)

Sep 5, 2025 · Find the exact solar panel size & weight in our 2025 guide. Our complete chart compares models by ft/cm and lbs/kg to help you plan your installation.



[Standard Solar Panel Sizes And Wattages ...](#)

1 day ago · 72-cell solar panel size. The dimensions of 72-cell solar panels are as follows: 77 inches long, and 39 inches wide. That's a 77x39 solar ...



[What Is Wp In Solar Panel?](#)

Jul 26, 2024 · What is Watt-Peak (Wp)? Watt-Peak (Wp) is a measure of the maximum power output a solar panel can produce under standard test conditions (STC). These conditions ...



[Guide to Solar Panel Sizes & Dimensions \(October 2025\)](#)

May 23, 2025 · Solar panel size refers to the total amount of power a solar panel can generate over a period of time Solar panel dimensions refers to the physical size of a solar panel Solar ...



[Solar Panel Sizes: Choosing the Right Dimensions for Any ...](#)

Jul 29, 2025 · Choosing the right solar panel size can make or break your system's performance. In this guide, we break down how to match your energy needs, roof space, and budget with ...



[What is Solar Panel Size and Why Does it Matter?](#)

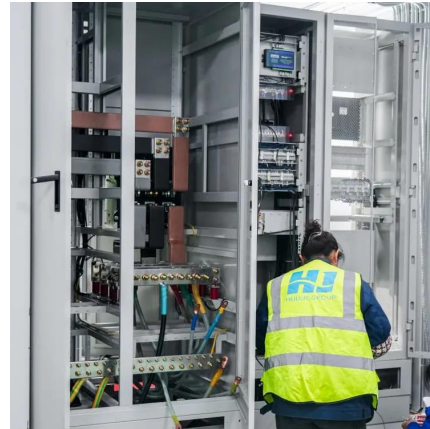
Apr 24, 2024 · The average size of a typical residential solar system in the US is 6-8 kW, meaning that a typical home rooftop array for the home will optimally have 15 - 20 solar panels installed ...





[Solar Panel Size & Dimensions Guide 2025](#)

Oct 7, 2025 · Complete guide to solar panel sizes and dimensions. Compare 60-cell vs 72-cell panels, weights, roof space requirements, and ...

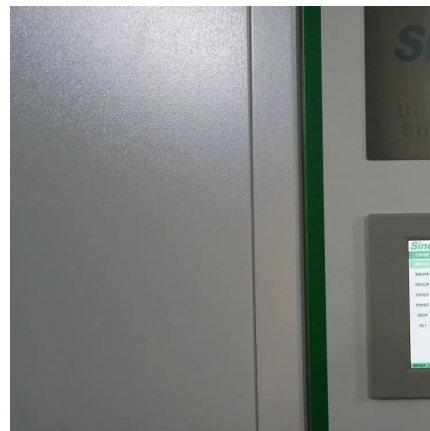


[Solar Panel Sizes and Wattage Explained](#)

Mar 18, 2024 · Solar panel size per kilowatt and wattage calculations depend on PV panel efficiency, shading, and orientation.

[What Is Wp In Solar Panel?](#)

Jul 26, 2024 · What is Watt-Peak (Wp)? Watt-Peak (Wp) is a measure of the maximum power output a solar panel can produce under standard test ...



[Solar Panel Sizes: Choosing the Right ...](#)

Jul 29, 2025 · Choosing the right solar panel size can make or break your system's performance. In this guide, we break down how to match your ...



[Solar Panel Sizes and Wattage Explained](#)

Mar 18, 2024 · Solar panel size per kilowatt and wattage calculations depend on PV panel efficiency, shading, and orientation.

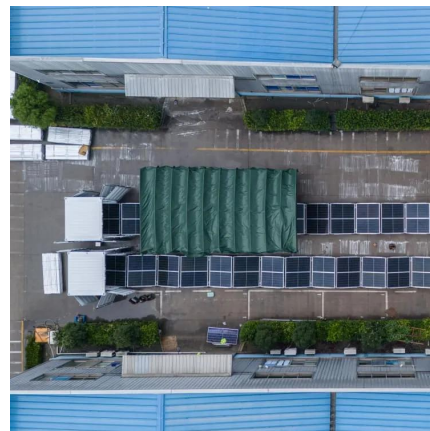


[Solar Panel Size Guide , Best Panel Size for Your Roof](#)

Jul 9, 2025 · Learn how to choose the ideal solar panel size for your home. Get expert tips, standard dimensions, and a size chart to simplify your solar decisions.

[What is Solar Panel Size and Why Does it ...](#)

Apr 24, 2024 · The average size of a typical residential solar system in the US is 6-8 kW, meaning that a typical home rooftop array for the home will ...



[Standard Solar Panel Sizes And Wattages \(100W-500W ...](#)

1 day ago · 72-cell solar panel size. The dimensions of 72-cell solar panels are as follows: 77 inches long, and 39 inches wide. That's a 77x39 solar panel; basically, a longer panel, mostly ...



[Solar Panel Size & Dimensions Guide 2025 , Complete Specs](#)

Oct 7, 2025 · Complete guide to solar panel sizes and dimensions. Compare 60-cell vs 72-cell panels, weights, roof space requirements, and installation specs for 2025.



[Calculation of peak power \(Wp\) required in photovoltaic ...](#)

Mar 18, 2025 · Determine peak power (Wp) for photovoltaic systems to optimize array sizing, energy output, and overall system efficiency with precise calculations.

[The Ultimate Guide to Solar Panel Size, ...](#)

Sep 5, 2025 · Find the exact solar panel size & weight in our 2025 guide. Our complete chart compares models by ft/cm and lbs/kg to help you plan ...



Contact Us

For technical specifications, project proposals, or partnership inquiries, please visit:
<https://eiei.pl>



Scan QR Code for More Information



<https://eiei.pl>