

Withdrawable circuit breaker in Germany





Overview

Should you choose a fixed or withdrawable circuit breaker?

One of the critical decisions when designing or upgrading switchgear is choosing between fixed and withdrawable circuit breakers. Each type has its advantages and is suited for different applications. The choice depends on various factors, including reliability, maintenance requirements, operational flexibility, and cost.

What is a withdrawable circuit breaker?

Applications that require frequent switching, testing, or reconfiguration of circuits benefit from withdrawable circuit breakers. They enable quick removal and replacement without shutting down the entire switchgear, making them ideal for industrial plants, power stations, and mission-critical facilities.

Why are circuit breakers important?

Circuit breakers play a vital role in electrical switchgear systems, ensuring the protection and control of electrical networks. One of the critical decisions when designing or upgrading switchgear is choosing between fixed and withdrawable circuit breakers. Each type has its advantages and is suited for different applications.

What are the advantages of withdrawable circuit breakers?

One of the main advantages of withdrawable circuit breakers is their ease of maintenance. Since they can be removed from the switchgear panel without disconnecting cables or affecting adjacent equipment, they allow for faster inspections, testing, and replacements. This is particularly beneficial in applications where downtime must be minimized.



Withdrawable circuit breaker in Germany

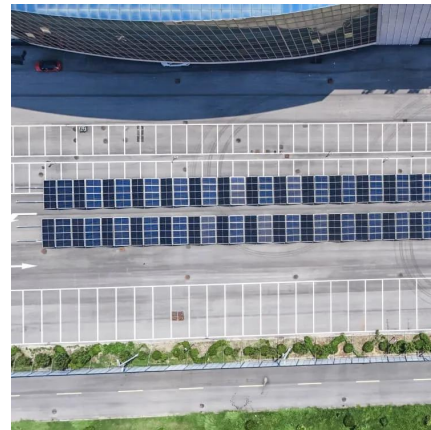


VSG-40.5KV withdrawable type indoor hv vacuum circuit breaker ...

The installation form of the circuit breaker in the switch cabinet can be either a fixed type or a withdrawable type installed on a trolley. VBI indoor high-voltage vacuum circuit breaker has ...

[Circuit breaker 3WA, withdrawable](#)

Sep 25, 2024 · Energy Electrical power distribution Low-Voltage Components Protection devices Air Circuit Breakers SENTRON 3WA air circuit breakers SENTRON 3WA1 air circuit breakers, ...



[Withdrawable Circuit Breaker](#)

Introduction In addition to the advantages provided by a plug-in base, installation of the circuit breaker on a chassis facilitates handling. Withdrawable chassis circuit breakers offer three ...

[Schneider MT06-16 N1 Withdrawable Circuit Breaker](#)

The **Schneider MT06-16 N1 withdrawable circuit breaker** is a high-performance low-voltage protection device designed for modern power distribution systems that require superior safety, ...



[SION vacuum circuit breakers - Flexible use in power](#)

Dec 5, 2018 · Flexible application in industry and infrastructure SION vacuum circuit breakers control all switching duties in medium-voltage distribution systems and are suitable for ...



ComPacT NS630b-1600

ComPacT NS630b-1600 - Withdrawable Circuit Breaker or Switch-Disconnecter - Instruction Sheet Date: 01 Jun 2022 , Type: Instruction sheet Languages: Chinese, English, French, ...



[Withdrawable Type Circuit Breaker Supplier, ...](#)

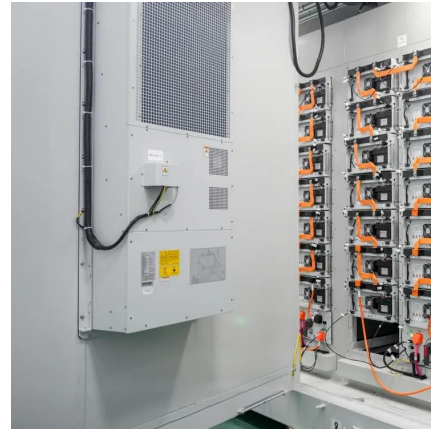
Dec 5, 2025 · Liyond's withdrawable circuit breaker-PT handcart VCB are designed for reliable and efficient use. Such withdrawable type circuit ...





Withdrawable Type Circuit Breaker Supplier, Handcart Vacuum Circuit

Dec 5, 2025 · Liyond's withdrawable circuit breaker-PT handcart VCB are designed for reliable and efficient use. Such withdrawable type circuit breaker is suitable for high-voltage electrical ...



[Vacuum circuit-breaker on withdrawable part - high duty](#)

Mar 15, 2024 · The circuit-breaker can only be closed when the withdrawable part is precisely in the defined test position or service position (mechanical inter lock, with additional electrical ...



Switchgear Circuit Breakers: When to Use Fixed vs. Withdrawable ...

Feb 17, 2025 · Circuit breakers play a vital role in electrical switchgear systems, ensuring the protection and control of electrical networks. One of the critical decisions when designing or ...



[Switchgear Circuit Breakers: When to Use ...](#)

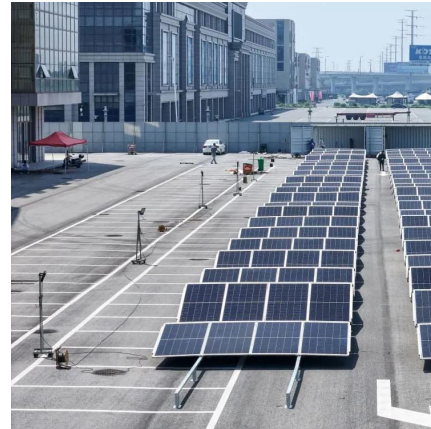
Feb 17, 2025 · Circuit breakers play a vital role in electrical switchgear systems, ensuring the protection and control of electrical networks. One ...





VSG-40.5KV withdrawable type indoor hv ...

The installation form of the circuit breaker in the switch cabinet can be either a fixed type or a withdrawable type installed on a trolley. VBI indoor high ...



Fixed and Withdrawn Circuit Breakers

Oct 23, 2023 · The withdrawable circuit breaker switchgear needs to be equipped with a separate grounding switch, which is generally on the outlet side, and it is difficult to install on the busbar ...

Contact Us

For technical specifications, project proposals, or partnership inquiries, please visit:
<https://eiei.pl>

Scan QR Code for More Information



<https://eiei.pl>