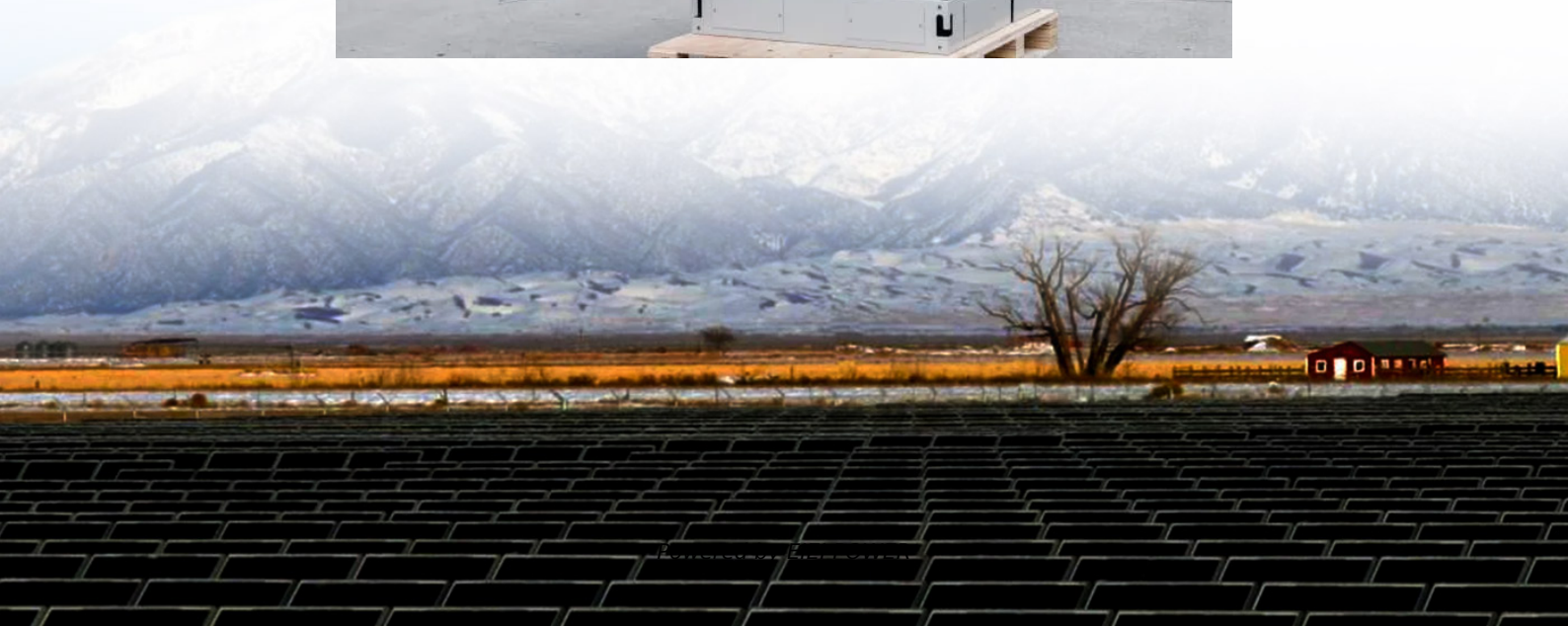


Wireless communication mainly relies on base stations





Overview

A cellular network base station, also frequently referred to as a base transceiver station (BTS), a node B (in 3G networks), or an eNodeB (in 4G LTE networks), is essentially a fixed location that facilitates communication between mobile devices (like smartphones) and the broader cellular network. Why is a base station important in wireless communication?

A base station is fundamental in wireless communication, because it facilitates the connection between your device and the wider network. Without base stations, mobile data and voice services would be impossible, as there would be no infrastructure to handle the transmission of signals.

What is a base station in a wireless network?

A base station is a critical component of wireless communication networks. It serves as the central point of a network that connects various devices, such as smartphones, tablets, and computers. The base station transmits and receives signals, ensuring seamless communication over radio frequencies.

Why are base stations important?

Base stations are the backbone of wireless communication networks, playing a pivotal role in signal transmission, network reliability, and high-speed data connectivity. As technology evolves, the importance of base stations will continue to grow, addressing new challenges and supporting the ever-expanding demand for wireless communication services.

What is a base station and how does it work?

A base station is a fixed point of communication between mobile devices and the wider telecom network. It transmits and receives radio signals, enabling your phone to access voice, data, and internet services. Together, thousands of base stations form a seamless web of coverage known as a cellular network. How Does It Work?



Wireless communication mainly relies on base stations



[The Base Station in Wireless Communications: ...](#)

Nov 10, 2023 · Base station, also known as BTS (Base Transceiver Station), is a key device in wireless communication systems such as GSM. ...

Cellular Network Base Stations: The Backbone of Wireless Communication

The seamless connectivity we experience daily, from making calls to streaming videos, relies heavily on a network of sophisticated infrastructure. At the heart of this infrastructure are ...



[UAV Communications for 5G and Beyond:](#)

Jan 22, 2023 · G wireless technologies. Owing to the versatility and high mobility of UAVs, low-altitude UAVs are extensively used in diverse fields for different applications and purposes. On ...

[Base Station's Role in Wireless Communication Networks](#)

A base station is fundamental in wireless communication, because it facilitates the connection between your device and the wider network. Without base stations, mobile data and



voice ...



Base Stations and Cell Towers: The Pillars of Mobile ...

May 16, 2024 · Base stations and cell towers are critical components of cellular communication systems, serving as the infrastructure that supports seamless mobile connectivity. These ...



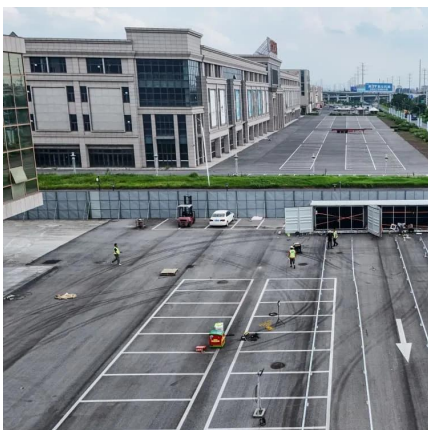
Deep Learning Aided Routing for Space-Air-Ground ...

Jan 23, 2023 · Next-generation wireless networks are envisaged to support high-speed, low-latency and high-reliability communications, anywhere and anytime. Yet, more than 70 percent ...



base station in 5g

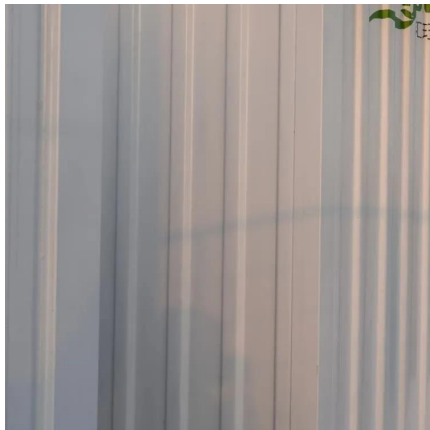
Dec 8, 2023 · A 5G base station is a complex system that integrates advanced RF technology, digital signal processing, and network ...





Understanding Base Stations: The Backbone of Wireless Communication

Jan 6, 2025 · Conclusion Base stations are the backbone of modern wireless communication networks. They ensure that mobile devices can connect to the internet, make calls, and send ...



Design of Wireless Communication Base Station Monitoring ...

Jan 1, 2023 · In the experiment, using the supervised machine learning algorithm, the program of the wireless communication base station monitoring system is designed by setting the working ...

Base Stations

Jul 23, 2025 · The present-day tele-space is incomplete without the base stations as these constitute an important part of the modern-day scheme ...



What Is A Base Station?

Apr 22, 2024 · A base station is an integral component of wireless communication networks, serving as a central point that manages the transmission and reception of signals between ...



[The Base Station in Wireless Communications: The Key to ...](#)

Nov 10, 2023 · Base station, also known as BTS (Base Transceiver Station), is a key device in wireless communication systems such as GSM. Equipped with an electromagnetic wave ...



[Understanding Wireless Base Stations: ...](#)

Sep 8, 2023 · A wireless base station is an important component of cellular networks. It serves as a hub that connects mobile devices to the broader ...

[What Does a Base Station Do and Why Is It Essential for ...](#)

Sep 5, 2025 · What Is a Base Station? A base station is a fixed point of communication between mobile devices and the wider telecom network. It transmits and receives radio signals, ...



[Breaking Down Base Stations - A Guide to ...](#)

May 31, 2022 · Wondering what telecom sites really look like? Find everything you need to know about telecom sites, towers, and their ...



Base Stations

Jul 23, 2025 · The present-day tele-space is incomplete without the base stations as these constitute an important part of the modern-day scheme of wireless communications. They are ...



BS (Base Station)

Mar 4, 2023 · A base station (BS) is a key component of modern wireless communication networks, providing the interface between wireless ...

[What is a Base Station? -- From Communication Core to ...](#)

Aug 19, 2025 · Base stations are the core of mobile communication, and with the rise of 5G, thermal and energy challenges are increasing. This article explains the definition, structure, ...



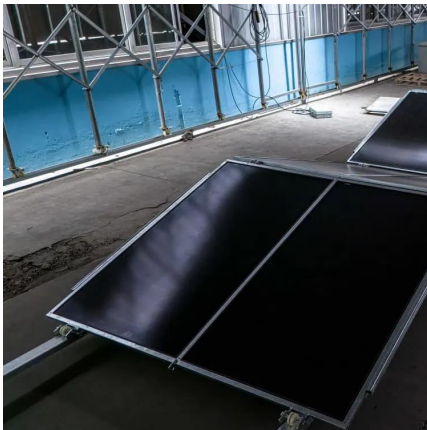
[4 types of Base stations](#)

Macro cell, Micro cell, Pico cell and Femto cell are 4 types of base stations in wireless communication networks.



basic of wireless communication

Dec 22, 2023 · 1. Fundamental Concepts: * Radio Frequency (RF): Wireless communication relies on the transmission and reception of electromagnetic waves, typically in the radio frequency ...



What is a Base Station in ...

What is a Base Station? A base station is a critical component in a telecommunications network. A fixed transceiver that acts as the central ...

What Is the Role of a Base Station in Wireless Communication?

Jun 27, 2025 · Base stations are the backbone of wireless communication networks, playing a pivotal role in signal transmission, network reliability, and high-speed data connectivity. As ...



Contact Us

For technical specifications, project proposals, or partnership inquiries, please visit:
<https://eiei.pl>



Scan QR Code for More Information



<https://eiei.pl>