

Wind turbine safety protection system





Overview

What is a fall protection system for wind turbines?

Innotech's fall protection systems for wind turbines allow a smooth transition between structure and safety system, while maintaining maximum safety.

How to protect a wind turbine if wind speed exceeds 25 m/s?

Tail-bend protection: When the wind speed exceeds 25m/s, the rotor of the turbine will yaw a certain degree from the wind direction automatically. And the rotating speed of the rotor will drop off. As it has such a reliable mechanical protecting system, the system has no other electrical or magnetic safety device. 5□.

What is a protection scheme in a wind electric plant?

Protection schemes within these types of equipment are designed by their manufacturers and are integral to the equipment. Wind Electric Plants are composed of many wind turbine generators (WTGs) which are connected to a collector substation through a collector system.

What are wind turbine safety rules?

Wind Turbine Safety Rules (WTSR) The Wind Turbine Safety Rules (WTSRs) are a model set of Safety Rules and procedures to help formalise a Safe System of Work (SSoW) to manage the significant risks associated with a wind turbine, both onshore and offshore.



Wind turbine safety protection system



[Wind Turbine Safety Rules \(WTSR\) , Energy Institute](#)

The Wind Turbine Safety Rules (" WTSR") represent industry good practice to ensure that persons working on plant and low voltage apparatus to which these Safety Rules apply are ...

[KStrong Offshore Wind Energy Fall Protection Solutions](#)

Nov 13, 2024 · In the wind energy industry, safety is paramount. Wind turbine technicians are exposed to numerous fall hazards, with risks heightened by extreme heights and challenging ...



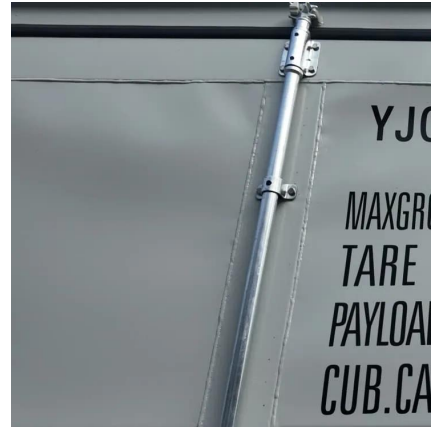
[Wind Turbine Safety: Everything You Need to Know , 60Hertz](#)

A protection system is a mechanism that is implemented at the design stage of wind turbines to protect them from overheating, overvoltage, grid failure, crashing and more.



[Wind Turbine Safety Rules , SafetyOn](#)

The Wind Turbine Safety Rules (WTSRs) are a model set of Safety Rules and procedures to help formalise a Safe System of Work (SSoW) to manage the significant risks associated with a ...



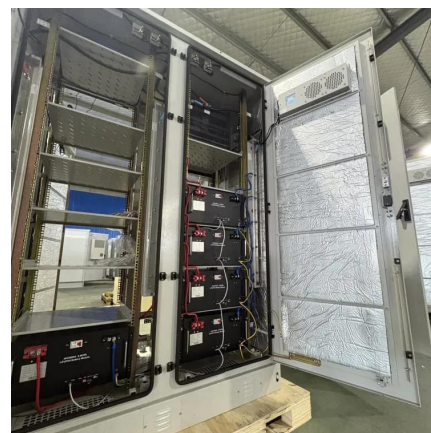
[Safety sensors for personal protection at wind power plants](#)

Jan 29, 2024 · A wind turbine's engine room is entered for maintenance or other purposes. When the rotor blades are spinning, this poses a potential hazard to personnel. To prevent the wind ...



[\(PDF\) Combined Wind Turbine Protection System](#)

Oct 12, 2024 · Using a decomposition method followed by the integration of protection components, we propose a combined protection system designed to improve the overall ...



[Safety sensors for personal protection at wind ...](#)

Jan 29, 2024 · A wind turbine's engine room is entered for maintenance or other purposes. When the rotor blades are spinning, this poses a ...





[\(PDF\) Combined Wind Turbine Protection ...](#)

Oct 12, 2024 · Using a decomposition method followed by the integration of protection components, we propose a combined protection system ...



[Ensuring Safety in the Wind Energy Sector with ...](#)

Mar 21, 2025 · Construction workers at wind farms exposed to heights of six feet or more must be provided with protection from falls through guardrail systems, safety net systems, or personal ...

[The protection & safety systems of small wind turbine](#)

The protection & safety systems of small wind turbine After 30 years development, there are many different protection and safety systems for small wind turbine from 1kw to 50kw.



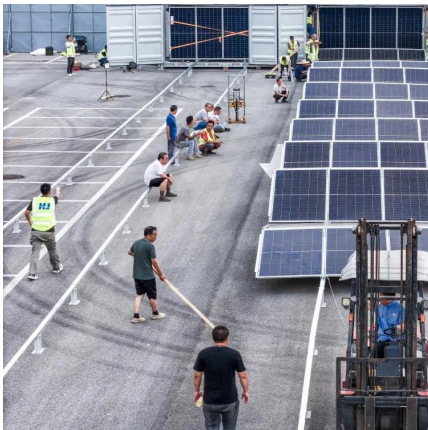
[Wind Turbine Safety Rules \(WTSR\) , Energy ...](#)

The Wind Turbine Safety Rules (" WTSR") represent industry good practice to ensure that persons working on plant and low voltage apparatus to ...



[Wind Turbine Safety Rules , SafetyOn](#)

The Wind Turbine Safety Rules (WTSRs) are a model set of Safety Rules and procedures to help formalise a Safe System of Work (SSoW) to ...



[Protection of Wind Electric Plants](#)

Jan 4, 2023 · Wind Electric Plants are composed of many wind turbine generators (WTGs) which are connected to a collector substation through a collector system. The collector system is ...

[Fall protection for wind turbines](#)

Innotech's fall protection systems for wind turbines allow a smooth transition between structure and safety system, while maintaining maximum safety.



[Ensuring Safety in the Wind Energy Sector ...](#)

Mar 21, 2025 · Construction workers at wind farms exposed to heights of six feet or more must be provided with protection from falls through guardrail ...



Contact Us

For technical specifications, project proposals, or partnership inquiries, please visit:
<https://eiei.pl>

Scan QR Code for More Information



<https://eiei.pl>