

# Which wind power base station is the best for power plants





## Overview

---

How do you choose a wind power plant site?

The success and efficiency of a wind power plant depend significantly on the strategic selection of its location. Choosing the right site involves evaluating various factors ranging from wind resource availability to environmental impacts and socio-economic considerations.

What makes a good wind power plant performance?

Wind power plants location A good performance of the energy system is directly associated with the geographic characteristics of a region, which includes local resources, distance to roads, economic activities, settlement structures, and energy infrastructure .

How does location affect the performance of wind power generation systems?

Consequently, the adequate local choice of turbine installation is essential for greater energy, economic, and environmental efficiency. The location has a significant impact on the performance of wind power generation systems . Therefore, the best use of the plant's energy potential is directly influenced by the chosen location.

How do I choose a location for a wind turbine or wind farm?

There are many factors to consider when choosing a location for a wind turbine or wind farm, such as (but not limited to) the wind resource potential in the area, proximity to existing power lines, and potential environmental impacts.



## Which wind power base station is the best for power plants

---



### [Wind Turbines, Wind Energy, Wind Power Plant Location ...](#)

Jun 6, 2023 · The wind power generator converts the kinetic energy of the blades into electrical energy, which is transmitted back to the base station via the wind turbine tower. Most wind ...

### [WINDEXchange: Wind Project Site Selection](#)

What Is the Best Location for Wind Turbines?  
There are many factors to consider when choosing a location for a wind turbine or wind farm, such as (but not limited to) the wind resource ...



### [Wind power plant site selection: A systematic review](#)

Sep 1, 2021 · Optimal power dispatching for a grid-connected electric vehicle charging station microgrid with renewable energy, battery storage and peer-to-peer energy sharing



### [Wind power plant site selection: A systematic ...](#)

Sep 1, 2021 · Optimal power dispatching for a grid-connected electric vehicle charging station microgrid with renewable energy, battery storage and ...



### [Wind power plant site selection: A systematic review](#)

Sep 1, 2021 · 1.1. Wind power plants location A good performance of the energy system is directly associated with the geographic characteristics of a region, which includes local resources, ...



### [How to Select Location for a Wind Farm and ...](#)

Jan 21, 2025 · These wind power stations should continue to collect data even after a wind farm is installed. The data improves siting of a wind ...



### [Optimal Configuration of Wind-PV and Energy Storage in ...](#)

Aug 25, 2023 · The installed capacity of energy storage in China has increased dramatically due to the national power system reform and the integration of large scale renewable energy with ...





### [Optimal Configuration of Wind-PV and ...](#)

Aug 25, 2023 · The installed capacity of energy storage in China has increased dramatically due to the national power system reform and the ...

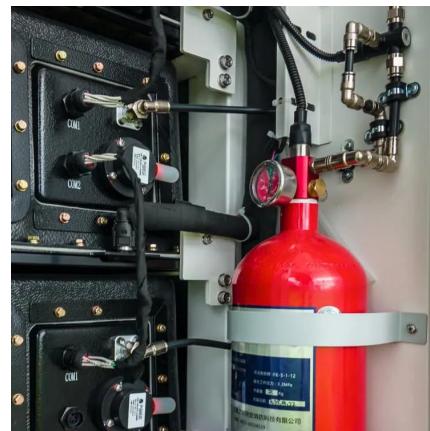


### [How to Choose the Right Location for a Wind Power Plant](#)

Find out the advantages of wind power plants have for clean and sustainable energy. Learn for efficient wind energy generation systems for renewable energy generation.

### [Site Selection Criteria for Wind Power Plants](#)

Jul 10, 2024 · Wind power is a pivotal component of the global renewable energy landscape, offering a sustainable alternative to fossil fuel-based ...



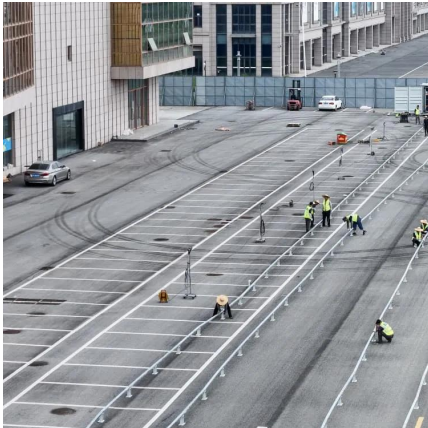
### [WINDEXchange: Wind Project Site Selection](#)

What Is the Best Location for Wind Turbines? There are many factors to consider when choosing a location for a wind turbine or wind farm, such ...



### [Where wind power is harnessed](#)

Jun 12, 2024 · Wind power plants require careful planning. Operating a wind power plant is more complex than simply erecting wind turbines in a windy area. Wind power plant owners carefully ...



### [Site Selection Criteria for Wind Power Plants](#)

Jul 10, 2024 · Wind power is a pivotal component of the global renewable energy landscape, offering a sustainable alternative to fossil fuel-based electricity generation. The success and ...

### [How to Select Location for a Wind Farm and Make Electricity](#)

Jan 21, 2025 · These wind power stations should continue to collect data even after a wind farm is installed. The data improves siting of a wind farm and also provides reference sites for ...



### [What Are the Best Locations for Installing Wind Turbines?](#)

Nov 2, 2024 · Understanding these factors can significantly impact the effectiveness of wind energy generation. Factors Influencing Location Selection Certain criteria are essential when ...



## Contact Us

---

For technical specifications, project proposals, or partnership inquiries, please visit:  
<https://eiei.pl>

### Scan QR Code for More Information



<https://eiei.pl>