

Which power station is a cycle generator





Overview

What is a combined cycle power plant?

A combined cycle power plant is a highly efficient type of power plant that uses both gas turbines and steam turbines to generate electricity. But how does it work?

.

What is the first cycle in a combined cycle power plant?

The first cycle in a combined cycle power plant is the simple cycle combustion turbine.

What is an HRSG in a combined cycle power plant?

An HRSG (Heat Recovery Steam Generator) is a key component in combined cycle power plants. In a combined-cycle power station, hot exhaust from a gas turbine is fed to an HRSG to generate steam, which in turn drives a steam turbine. This combination produces electricity more efficiently than either the gas turbine or steam turbine alone.

Why are combined cycle power plants more efficient than traditional power plants?

Combined cycle power plants are more efficient than traditional power plants that use only gas turbines or steam turbines; this is because combined cycle power plants utilise the heat from a gas turbine's exhaust gases to generate steam, consequently reducing wasted energy.



Which power station is a cycle generator



[Most combined-cycle power plants employ two combustion ...](#)

Apr 25, 2022 · Most combined-cycle power blocks have combustion and steam turbine components each connected with a generator. However, 13 GW of combined-cycle capacity ...

Cycle Power Plant

Combined cycle power plant is a type of power plant that uses a combination between the Brayton cycles of gas turbine with Rankine cycle of HRSG (Heat Recovery Steam Generator) which is ...



[Combined Cycle Power Plants](#)

2 days ago · A combined-cycle power plant uses both a gas and a steam turbine together to produce up to 50% more electricity from the same fuel ...

[Combined Cycle Power Plant \(CCPP\), How Does It Work?](#)

Feb 6, 2025 · A combined Cycle Power Plant (CCPP) is a power plant that utilizes two turbines: gas and steam turbines to make energy more efficient. Read more here!



Combined Cycle Power Plant (CCPP), How ...

Feb 6, 2025 · A combined Cycle Power Plant (CCPP) is a power plant that utilizes two turbines: gas and steam turbines to make energy more ...



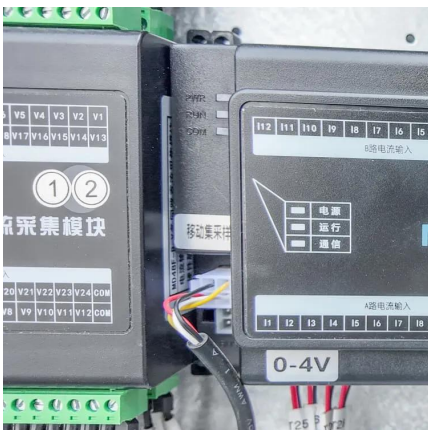
What is a Combined Cycle Power Plant (CCPP)?

Jun 18, 2025 · A Combined Cycle Power Plant is a modern type of thermal power plant that uses two cycles instead of one to generate electricity. It combines the Brayton Cycle (gas turbine) ...



How does a combined-cycle power plant work?

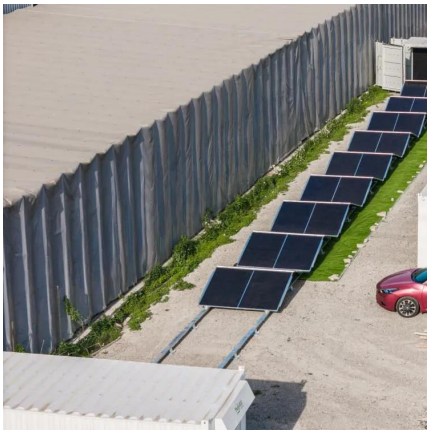
Mar 6, 2025 · A combined-cycle power plant improves efficiency by using both gas and steam turbines to generate electricity. The waste heat from ...





Combined Cycle Power Plants

Dec 7, 2022 · Combined-cycle power generation equipment is manufactured in two basic configurations, single-shaft and multi-shaft. The single-shaft combined cycle system consists ...

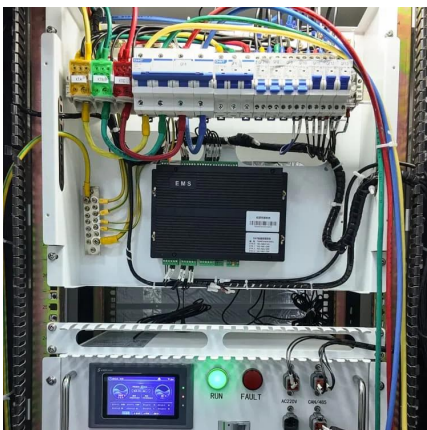


Combined Cycle Power Plants

2 days ago · A combined-cycle power plant uses both a gas and a steam turbine together to produce up to 50% more electricity from the same fuel than a traditional simple-cycle plant. ...

Most combined-cycle power plants employ ...

Apr 25, 2022 · Most combined-cycle power blocks have combustion and steam turbine components each connected with a generator. However, 13 ...



Combined Cycle Power Plant Explained

What is a combined cycle power plant (CCPP), and how does it work? Learn about gas turbine, power station, and heat recovery steam generator (HRSG).



How does a combined-cycle power plant work?

Mar 6, 2025 · A combined-cycle power plant improves efficiency by using both gas and steam turbines to generate electricity. The waste heat from the gas turbine is used to produce steam, ...



Combined Cycle Power Plants (CCPP)

2 days ago · Our Combined Cycle Power Plants (CCPP) use advanced gas and steam turbines for over 64% efficiency, lower emissions, and flexible output.

What is a Combined Cycle Power Plant?

What Is A Combined Cycle Power Plant? Introduction of Combined Cycle Power Plant Components of A Combined Cycle Power Plant Gas Turbine Hrsg Or Heat Recovery Steam Generator Steam Turbine Other Accessories of Combined Cycle Power Plant Auxiliary Systems of Combined Cycle Power Plant Start-Up Philosophy of Combined Cycle Power Generation Plants Fuel For Combined Cycle Power Plant A Combined Cycle Power Plant (CCPP) is a type of power generation facility that utilizes a combination of two thermodynamic cycles to generate electricity efficiently. It incorporates a gas turbine cycle, known as the Brayton cycle, and a steam turbine cycle, known as the Rankine cycle, in a coordinated manner. This combination allows for the efficient See more on whatispiiping saVRee



Combined Cycle Power Plant Explained

What is a combined cycle power plant (CCPP),



and how does it work? Learn about gas turbine, power station, and heat recovery steam generator ...



[What is a Combined Cycle Power Plant?](#)

A Combined cycle power plant is a highly efficient power generation unit. They are the cleanest and highly efficient. The process of combined cycle power generation recovers the ...

Contact Us

For technical specifications, project proposals, or partnership inquiries, please visit:
<https://eiei.pl>

Scan QR Code for More Information



<https://eiei.pl>