

Which city has the wind and solar complementary solar container communication station





Overview

Are wind power and solar PV power potential complementary?

The assessment results of temporal volatility of wind power and solar PV power potential in different regions of China show that they can be well complementary at different time scales.

Can wind-solar-hydro complementarity improve China's future power system stability?

Wind-solar-hydro complementary potential shows great temporal and spatial variation. Renewable complementarity can improve China's future power system stability. In the context of carbon neutrality, renewable energy, especially wind power, solar PV and hydropower, will become the most important power sources in the future low-carbon power system.

What is China's largest Floating photovoltaic power station?

China's Floating PV Power Station: Fishery-Photovoltaic Complementary. China's largest floating photovoltaic power station, Anhui Fuyang Southern Wind-solar-storage Base, utilizes flooded coal mining areas to generate renewable energy while protecting the local environment.

Which provinces have high solar power output in summer?

Provinces where solar PV resource potential takes up a high share, such as Shaanxi, Jiangxi and Hainan, have high power output in summer. The power output in Jiangxi peaks in July with 10.39 TWh of photovoltaic power, accounting for 72.5% of the total.



Which city has the wind and solar complementary solar container co



[Complementary potential of wind-solar-hydro power in ...](#)

Sep 1, 2023 · Since wind power and solar PV are specifically intermittent and space-heterogeneity, an assessment of renewable energy potential considering the variability of wind ...

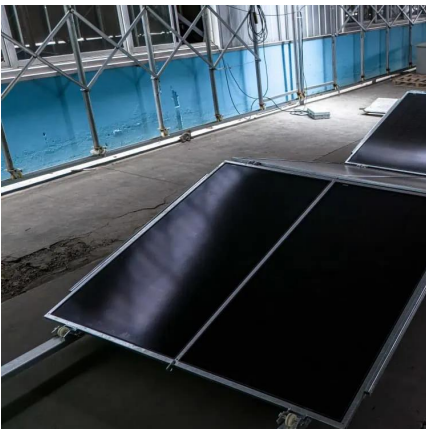
Application of wind solar complementary power generation ...

Apr 14, 2022 · As inexhaustible renewable resources, solar energy and wind energy are quite abundant on the island. In addition, solar energy and wind energy are highly complementary in ...



[Massive wind and solar power project in Gansu begins ...](#)

Dec 22, 2023 · The new energy station has adopted the integrated wind-solar power layout (integrated circuits), which has increased land utilization, reduced investment costs, and ...



[China's Largest Grid-Forming Energy Storage Station ...](#)

Apr 9, 2024 · This marks the completion and operation of the largest grid-forming energy storage station in China. The photo shows the energy storage station supporting the Ningdong ...

...



[Massive wind and solar power project in ...](#)

Dec 22, 2023 · The new energy station has adopted the integrated wind-solar power layout (integrated circuits), which has increased land utilization, ...



[Construction of wind and solar complementary ...](#)

Dec 1, 2025 · Jun 13, 2024 · Based on the complementarity of wind energy and solar energy, the base station wind-solar complementary power supply system has the advantages of stable ...



[China's Floating PV Power Station: Fishery ...](#)

Dec 30, 2023 · China's largest floating photovoltaic power station, Anhui Fuyang Southern Wind-solar-storage Base, utilizes flooded coal mining ...





[Integrated Solar-Wind Power Container for Communications](#)

This large-capacity, modular outdoor base station seamlessly integrates photovoltaic, wind power, and energy storage to provide a stable DC48V power supply and optical distribution. Perfect ...



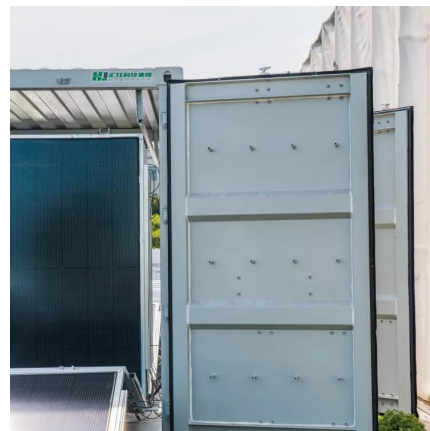
Syria Communication Base Station Wind and Solar Complementary ...

The communication base station power station based on wind-solar complementation comprises a foundation base, a communication tower mast, a base station machine room, a wind power



China's Floating PV Power Station: Fishery-Photovoltaic Complementary.

Dec 30, 2023 · China's largest floating photovoltaic power station, Anhui Fuyang Southern Wind-solar-storage Base, utilizes flooded coal mining areas to generate renewable energy while ...



[Application of wind solar complementary ...](#)

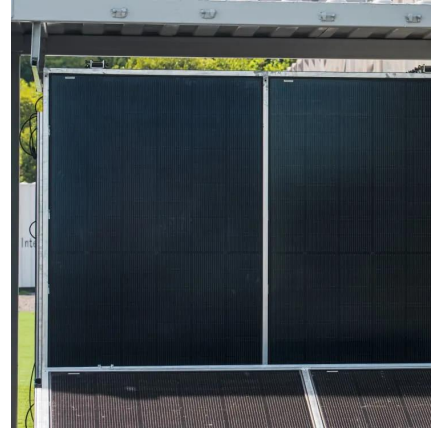
Apr 14, 2022 · As inexhaustible renewable resources, solar energy and wind energy are quite abundant on the island. In addition, solar energy and ...





Ranking of domestic global communication base station wind and solar

Traditionally powered by coal-dominated grid electricity, these stations contribute significantly to operational costs and air pollution. This study offers a comprehensive roadmap for low-carbon ...



Communication base station wind and solar complementary communication

The wind-solar-diesel hybrid power supply system of the communication base station is composed of a wind turbine, a solar cell module, an integrated controller for hybrid energy

Contact Us

For technical specifications, project proposals, or partnership inquiries, please visit: <https://eiei.pl>

Scan QR Code for More Information



<https://eiei.pl>