

Where is the battery fuse of the UPS battery cabinet





Overview

How to install UPS & battery cabinet?

1. Installation sequence is as follows: 1.1 First, determine the installation location of the UPS and battery cabinet upon arrival at the site. 1.2. Install the battery connection Wires.

How to connect a UPS battery to a host?

F. Before connecting the battery cables from the battery cabinet to the host, measure the battery voltage with a multimeter, which should be 103.36V, and check if the positive and negative leads are correctly connected. If there is a battery box, connect the batteries in series and link them to the host as required. 2. UPS Battery Wiring Example A.

How long do UPS batteries last?

All UPS batteries have a limited service life, regardless of how or where the UPS is deployed. While determining battery life can be tricky, there are four primary factors that contribute to a battery's overall lifespan. 1. Ambient temperature battery string life by preventing.

How to install a ups power supply?

The most important aspect of installing a UPS power supply is connecting the batteries. The key to connecting the batteries is to link the positive terminal to the negative terminal, connecting each battery in series, and then leading out two power cables, one positive and one negative, to connect to the air switch. C.



Where is the battery fuse of the UPS battery cabinet



Battery cabinet UPS

Feb 23, 2023 · BATTERY CABINET FOR ALL THREE-PHASE UPS Universal battery cabinets for all three-phase Legrand UPS from 10kVA up to 800kVA power range. The Battery cabinet is ...

[Eaton UPS fundamentals handbook](#)

Jul 2, 2025 · Positive grid corrosion has been the most common end-of-life factor for UPS batteries, which is a result of the normal aging process due to UPS battery chemistry and ...



U-ENM00044

Feb 3, 2025 · 1 GENERAL DESCRIPTION This manual provides information to authorized service personnel required for proper start-up and maintenance of the UD-100528 Battery cabinet. ...



[/15/20KVA UPS Battery Cabinet Installation and ...](#)

Jan 9, 2025 · Installation or replacement of batteries must be located in a SERVICE ACCESS AREA: The service manual shall include the following instructions for battery replacement and ...



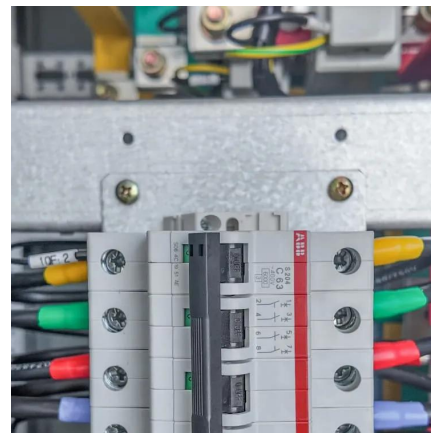
[Protection of UPS Systems](#)

4 days ago · Fuse Protection for Battery Storage and UPS Systems: A Technical Guide Modern energy systems--combining battery storage, rectifiers, inverters, and bypass circuits--are at ...



[How to do UPS Battery Wiring?](#)

1 day ago · Learn how to wire UPS batteries safely with our detailed step-by-step guide. From installation location to proper battery connection and wiring tips, ensure a secure and efficient ...



[Liebert® EXS External Battery Cabinet Installer/User Guide](#)

Jan 31, 2024 · For battery cabinets that are connecting to a Vertiv™ Liebert® EXS UPS, see Figure 2.1 on page 8, cables will run from the positive, negative and neutral busbars of the ...





[Eaton Samsung Gen 3 Battery Cabinet Installation and ...](#)

Mar 25, 2025 · Because of the battery shunt trip wiring route in the UPS cabinet, the wiring from the Eaton Samsung Gen 3 to the UPS must use wire rated for 600V and Class 1 wiring methods.

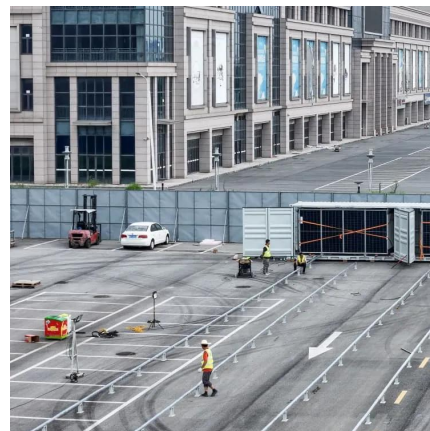


[FUSES FOR BATTERY ENERGY STORAGE SYSTEMS](#)

Fuses can be easily replaced without the accumulation of additional downtime. BESS fuses' low watt loss prevents energy loss, which efficiently minimizes wasted power from components. ...

[Protection of UPS Systems](#)

4 days ago · Fuse Protection for Battery Storage and UPS Systems: A Technical Guide Modern energy systems--combining battery storage, ...



[Solved: Blown fuse for battery](#)

Jun 29, 2021 · Solved: Fuse on main board of Back-UPS XS 1500. I've blown the two fuses on the main board of my UPS. I was using an external battery that had a wiring short.



Contact Us

For technical specifications, project proposals, or partnership inquiries, please visit:
<https://eiei.pl>

Scan QR Code for More Information



<https://eiei.pl>