

What is the mc mark on the front of the solar container lithium battery pack





Overview

What is a lithium or sodium ion battery Mark?

1.9.2 Lithium or sodium ion battery mark Packages containing lithium or sodium ion cells or batteries prepared in accordance with special provision 1.

Which batteries can be affixed to a package?

be affixed to packages containing larger lithium-ion (cells >20Wh or batteries >100Wh), lithium-metal (>1g per cell, >2g per battery), or sodium-ion cells and batteries. The battery mark is not applied to packages which have been prepared in accordance with:

Can a lithium battery Mark be printed directly on the packaging?

The lithium battery mark may be printed directly on the outer packaging provided that there is sufficient contrast between the elements of the lithium battery mark and the colour of the packaging material. The mark must be in the form of a rectangle, or a square, with minimum dimensions of 100 mm x 100 mm.

How to mark lithium ion batteries?

be marked as shown in Figure 5.2.1.9.2. cells or batteries or 'UN 3480' for lithium ion cells or batteries. Where the lithium cells or batteries 3091' or 'UN 3481' as appropriate shall be indicated. Where a package contains lithium cells or more marks. The mark shall be in the form of a rectangle with hatched edging.



What is the mc mark on the front of the solar container lithium batt



[Battery guidance document](#)

Feb 3, 2025 · The lithium battery mark may be printed directly on the outer packaging provided that there is sufficient contrast between the elements of the lithium battery mark and the colour ...

The Complete Guide to CAUTION and Overpack Labeling for Lithium Battery

Jul 30, 2025 · Properly use CAUTION & Overpack Labels of lithium battery for safe, compliant shipping. Follow placement, marking, and regulatory tips to avoid shipment issues.



[Understanding Battery Labels: A Quick Reference Guide](#)

Apr 11, 2025 · What do battery labels mean? Battery labels provide critical information about chemistry (e.g., alkaline, lithium), voltage, capacity, safety certifications, and disposal ...

[Lithium Battery Symbol Guide for Professionals](#)

Jun 25, 2025 · The lithium-ion battery symbol ensures safety, compliance, and proper use in design. Learn key markings, labels, and real-world applications.



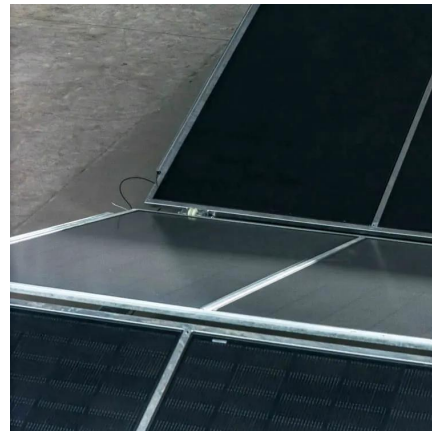
[The Complete Guide to CAUTION and ...](#)

Jul 30, 2025 · Properly use CAUTION & Overpack Labels of lithium battery for safe, compliant shipping. Follow placement, marking, and regulatory ...



[All About Lithium Battery Labels](#)

Oct 22, 2024 · Explore everything you need to know about lithium battery labels, including types, regulations, design elements, ...



[Lithium Battery Symbol Guide for Professionals](#)

Jun 25, 2025 · The lithium-ion battery symbol ensures safety, compliance, and proper use in design. Learn key markings, labels, and real-world ...





5.2.1.9 Lithium battery mark

3 days ago · 5.2.1.9 Lithium battery mark
5.2.1.9.1 Packages containing lithium cells or batteries prepared in accordance with special provision 188 shall be marked as shown in Figure 5.2.1.9.2.



All About Lithium Battery Labels

Oct 22, 2024 · Explore everything you need to know about lithium battery labels, including types, regulations, design elements, and proper usage for safety.

A Comprehensive Guide to Lithium Battery ...

Jul 9, 2024 · Learn to read lithium battery labels. Understand key details like voltage, capacity, and safety warnings for safe and efficient battery use.



Understanding Battery Labeling: What the Letters on a Battery ...

Apr 11, 2025 · Battery labels encode chemistry (e.g., "CR" for lithium), size (like "2032" indicating 20mm diameter x 3.2mm height), voltage, capacity, and safety certifications. These ...



[Lithium Battery Label 2025](#)

Nov 12, 2024 · Changes to the Lithium & Sodium Battery Mark Regulations for 2025 IATA /ICAO have updated the 2025 Dangerous Goods ...

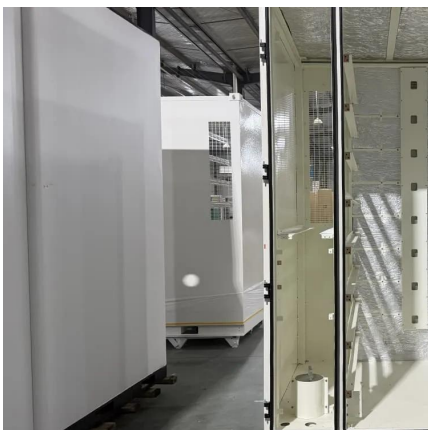
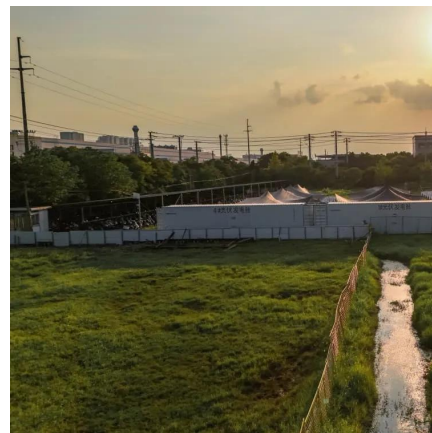


[5.2.1.9 Lithium or sodium ion battery mark](#)

Oct 5, 2024 · Lithium or sodium ion battery mark Packages containing lithium or sodium ion cells or batteries prepared in accordance with special provision 188 must be marked as shown in ...

[A Comprehensive Guide to Lithium Battery Labels](#)

Jul 9, 2024 · Learn to read lithium battery labels. Understand key details like voltage, capacity, and safety warnings for safe and efficient battery use.



[Lithium Battery Label 2025](#)

Nov 12, 2024 · Changes to the Lithium & Sodium Battery Mark Regulations for 2025 IATA /ICAO have updated the 2025 Dangerous Goods Regulations with key the following key changes: ...



Contact Us

For technical specifications, project proposals, or partnership inquiries, please visit:
<https://eiei.pl>

Scan QR Code for More Information



<https://eiei.pl>