

What is the input voltage of the 24v inverter





Overview

What is the input voltage of an inverter?

Understanding the inverter voltage is crucial for selecting the right equipment for your power system. Inverter voltage typically falls into three main categories: 12V, 24V, and 48V. These values signify the nominal direct current (DC) input voltage required for the inverter to function optimally. What is the rated input voltage of an inverter?

.

What is the input voltage of a solar inverter?

Input voltage indicates the DC voltage required to operate the inverter. Inverters generally have an input voltage of 12V, 24V, or 48V. The inverter selected must match the power source, such as batteries or solar panels. Solar and EV systems usually use higher input voltages, such as 48V or more.

What is the difference between a 12V and 24V inverter?

The difference between a 12V and 24V inverter is the amount of input volts it can handle. This is the voltage flowing from the battery into the inverter before the electricity is converted from DC to AC. So a 12V inverter is designed for 12 volts input from the battery. And a 24V inverter is designed for 24 volts input from the battery.

What voltage is a 12V inverter?

Inverters come in various configurations, each designed for specific power systems. Common rated input voltages include 12V, 24V, and 48V. The choice depends on the application, the size of the power system, and the available power source. A 12V inverter is commonly used for smaller applications, such as in vehicles or small off-grid setups.



What is the input voltage of the 24v inverter



[How to Read Solar Inverter Specifications](#)

Nov 17, 2023 · Solar inverter specifications include input and output specs highlighting voltage, power, efficiency, protection, and safety features.

[Inverter Current Calculator, Formula, Inverter Calculation](#)

1 day ago · Inverter Current Formula: Inverter current is the electric current drawn by an inverter to supply power to connected loads. The current depends on the power output required by the ...



[What Is Inverter Voltage?](#)

Oct 30, 2025 · Inverter voltage plays a vital role in determining the efficiency and compatibility of your energy system. Let's break down input and output voltages and how to select the right ...

[12V vs 24V Inverter: What's The Difference](#)

Torn between 12V and 24V inverters? Discover the key differences in efficiency, cost, and power capacity to determine which is better for your ...



12V vs 24V Inverter: What's the difference between 12 and ...

The difference between a 12V and 24V inverter is the amount of input volts it can handle. This is the voltage flowing from the battery into the inverter before the electricity is converted from DC ...

24v Inverter, 24v DC to 120v/240v AC Power Inverter , inverter...

1500W continuous and 3000W peak modified sine wave inverter, 24 volt DC input and selectable 110V/120V/220V/230V AC output, this DC to AC power inverter with safe charging design to ...



How to Calculate the Maximum Output Power of a Power Inverter

For a 24V 100A battery with a 24V to 220V inverter, we can get 220V and 10.9A as the maximum power draw ($100A/9.16 = 10.9A$). $220V/24V = 9.16$, so the step up voltage is 9.16. Let's now do ...



[Inverter Basics , inverter](#)

Dec 29, 2023 · An inverter takes input from a DC (direct current) power supply and generates an AC (alternating current) output, typically at a ...



[Understanding Inverter Voltage: Definition, ...](#)

Dec 16, 2024 · The voltage of an inverter itself is divided into several types, the first is a low-voltage inverter, a medium-voltage inverter, and a high ...

Power Inverter Input Voltages , RV Solar Kits And Inverter ...

Feb 24, 2025 · System Voltage: 12V inverters are designed for systems with 12V batteries, common in smaller applications like cars or small RVs. In contrast, 24V inverters work with ...



[A comprehensive guide to inverter voltage](#)

Dec 18, 2024 · How to choose the inverter voltage? To select the best inverter for your application, it is important to match the inverter's input ...



[The Differences Between 24v and 48v ...](#)

Apr 13, 2025 · The correct inverter voltage is essential for system efficiency, safety, and future scalability. In standard off-grid solar systems, RVs, or ...



[How Does Input Voltage \(12V, 24V, 48V\) Affect Inverter ...](#)

Aug 12, 2025 · When selecting a low voltage ac inverter for your industrial application, understanding the impact of input voltage is crucial. The choice between 12V, 24V, and 48V ...

[How to Read Solar Inverter Specifications](#)

Nov 17, 2023 · Solar inverter specifications include input and output specs highlighting voltage, power, efficiency, ...



[Inverter DC Input Voltage Calculator](#)

Nov 29, 2025 · Use our Inverter DC Input Voltage Calculator to determine the best DC voltage (12V, 24V, or 48V) for your solar inverter. Optimize wiring, efficiency, and system safety with ...



[24V Battery Voltage Chart](#)

This 24V battery voltage chart will help you understand how battery voltage changes as it discharges.



[How do I choose between a 12V and a 24V inverter? - EDECOA](#)

Aug 28, 2024 · What is the difference between 12V and 24V inverters? 12V and 24V inverters are named based on their input voltage differences. There are some differences between them, ...

[12V vs 24V Inverter: What's The Difference & Which is Better](#)

Torn between 12V and 24V inverters? Discover the key differences in efficiency, cost, and power capacity to determine which is better for your energy needs.



[How To Read And Interpret An Inverter ...](#)

3 days ago · Input voltage indicates the DC voltage required to operate the inverter. Inverters generally have an input voltage of 12V, 24V, or 48V. ...



[Understanding inverter voltage](#)

Jan 10, 2024 · In the realm of power electronics, the inverter voltage is a critical parameter that dictates its performance, compatibility, and safety. Understanding the intricacies of inverter ...

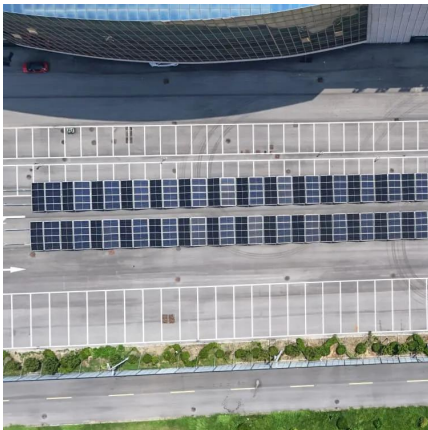
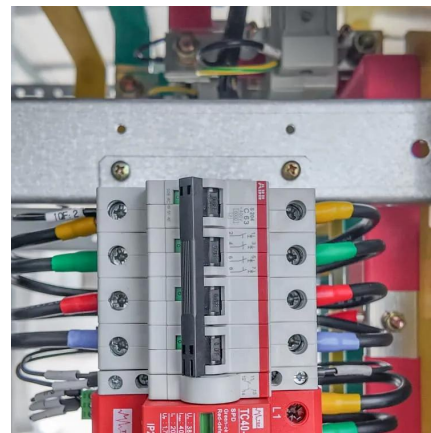


12V vs. 24V vs. 48V Power Inverters: How to Choose the Right Voltage

Sep 8, 2025 · When shopping for a power inverter, most beginners fixate on wattage or price--but the input voltage (12V, 24V, or 48V) is just as critical. Pick the wrong voltage, and your inverter ...

[12V vs 24V Inverter: What's the difference ...](#)

The difference between a 12V and 24V inverter is the amount of input volts it can handle. This is the voltage flowing from the battery into the inverter ...



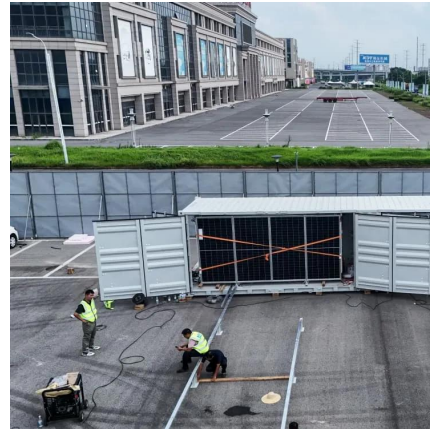
[Inverter: Frequently Asked Questions \(FAQ\) . inverter](#)

A: Inverters and their constituent components are designed and rated for certain input voltage levels. If an input voltage were to exceed this rating, it will almost certainly result in the ...



[How To Read And Interpret An Inverter Specification](#)

3 days ago · Input voltage indicates the DC voltage required to operate the inverter. Inverters generally have an input voltage of 12V, 24V, or 48V. The inverter selected must match the ...



[How do I choose between a 12V and a 24V ...](#)

Aug 28, 2024 · What is the difference between 12V and 24V inverters? 12V and 24V inverters are named based on their input voltage differences. ...

Contact Us

For technical specifications, project proposals, or partnership inquiries, please visit: <https://eiei.pl>

Scan QR Code for More Information



<https://eiei.pl>