

What is the best base station communication frequency





Overview

Which frequency band is best for a base station?

Mid-frequency bands (1 GHz – 6 GHz) provide a balance of coverage and speed. High-frequency bands (above 6 GHz) allow for higher data rates but shorter range. Choosing the appropriate frequency band based on these characteristics can optimize your base station performance.

How high should a base station antenna be?

Per ITU-R P.1410 recommendations, base station antenna heights typically range between 15-60 meters. Urban deployments favor 25-35m, rural coverage requires 40-55m, while 5G mmWave systems operate efficiently at 15-25m. Critical factors include propagation models, terrain, and frequency bands.

What are the different types of base stations?

Some basic types of base stations are as follows: Macro-base stations are tall towers ranging from 50 to 200 feet in height, placed at strategic locations to provide maximum coverage in a given area. Those are equipped with large towers and antennas that transmit and receive radio signals from wireless devices.

What are the different types of UHF base station antennas?

Antenna Design There are several different designs of UHF base station antennas, each with its own benefits and drawbacks. Some common designs include ground plane antennas, Yagi antennas, and log-periodic antennas. Ground plane antennas are simple and easy to construct, but they are omnidirectional and have relatively low gain.



What is the best base station communication frequency

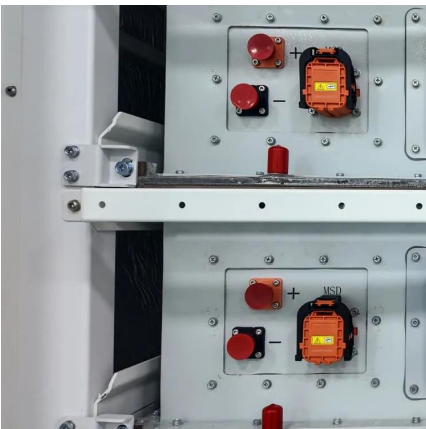
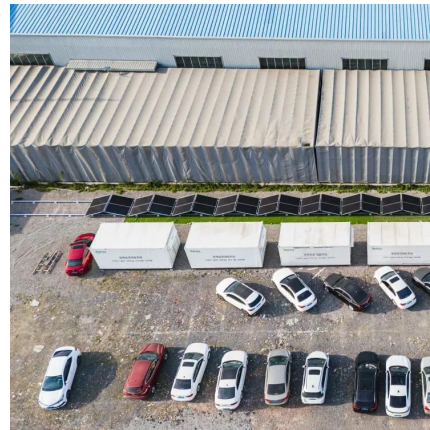


5G NR Base Station Classes: Type 1-C, Type 1-H, Type 1-O, ...

Learn about the different classes of 5G NR base stations (BS), including Type 1-C, Type 1-H, Type 1-O, and Type 2-O, and their specifications.

[Selecting the Perfect Base Station Antenna: ...](#)

Aug 15, 2023 · The base station antenna acts as a quiet architect of seamless connection in the complex web of contemporary communication ...



[Base Station Antenna Height ...](#)

Mar 17, 2025 · Per ITU-R P.1410 recommendations, base station antenna heights typically range between 15-60 meters. Urban deployments favor ...

[Base stations and networks](#)

5 days ago · Base stations enable mobile communications Mobile phones and other mobile devices require a network of base stations in order to function. The base station antennas ...



[Selecting the Perfect Base Station Antenna: An In-Depth](#)

Aug 15, 2023 · The base station antenna acts as a quiet architect of seamless connection in the complex web of contemporary communication networks, profoundly affecting coverage, ...



[5G NR Base Station Classes: Type 1-C, Type 1 ...](#)

Learn about the different classes of 5G NR base stations (BS), including Type 1-C, Type 1-H, Type 1-O, and Type 2-O, and their specifications.



How to Choose the Most Appropriate RF Antenna for 5G Base Stations...

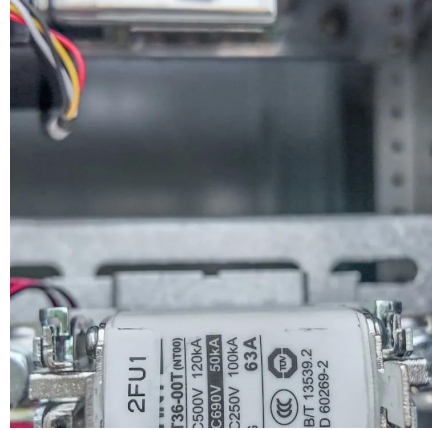
Aug 21, 2025 · Explore RFecho RF antennas for 5G, covering gain, frequency, polarization, and MIMO to optimize base station performance.





[Choosing the Optimal Channels for Base Stations: A ...](#)

Apr 22, 2025 · In the world of wireless communication, the choice of channels for base stations plays a critical role in ensuring reliable service, minimizing interference, and optimizing ...



[UHF Base Station Antenna: A Comprehensive ...](#)

Whether you're in law enforcement, public safety, or the military, a UHF base station antenna is an essential piece of communication equipment. This ...

Base Stations

Jul 23, 2025 · The present-day tele-space is incomplete without the base stations as these constitute an important part of the modern-day scheme ...



Base Stations

Jul 23, 2025 · The present-day tele-space is incomplete without the base stations as these constitute an important part of the modern-day scheme of wireless communications. They are ...



[Recommendations for Base Station Antennas](#)

Jul 9, 2025 · The procurement, testing and deployment of base station antennas - a critical component in the delivery of mobile communications - will be simpler for operators and ...



[Base Station Antenna Height Recommendations Explained](#)

Mar 17, 2025 · Per ITU-R P.1410 recommendations, base station antenna heights typically range between 15-60 meters. Urban deployments favor 25-35m, rural coverage requires 40-55m, ...

[UHF Base Station Antenna: A Comprehensive Guide to ...](#)

Whether you're in law enforcement, public safety, or the military, a UHF base station antenna is an essential piece of communication equipment. This guide covers everything you need to ...



[UHF Base Stations for Urban and Indoor Communication](#)

What Is a UHF Base Station? A UHF base station is a fixed communication system operating within the 300 MHz to 3 GHz frequency range. Known for its ability to penetrate obstacles, ...



Contact Us

For technical specifications, project proposals, or partnership inquiries, please visit:
<https://eiei.pl>

Scan QR Code for More Information



<https://eiei.pl>