

What is the battery value of a base station outdoors





Overview

How do I choose a base station?

Key Factors: **Power Consumption:** Determine the base station's load (in watts). **Backup Duration:** Identify the required backup time (hours). **Battery Voltage:** Select the correct voltage based on system design. **Efficiency & Discharge Rate:** Consider battery efficiency and discharge characteristics.

Which battery is best for telecom base station backup power?

Among various battery technologies, Lithium Iron Phosphate (LiFePO₄) batteries stand out as the ideal choice for telecom base station backup power due to their high safety, long lifespan, and excellent thermal stability.

What makes a telecom battery pack compatible with a base station?

Compatibility and Installation Voltage Compatibility: 48V is the standard voltage for telecom base stations, so the battery pack's output voltage must align with base station equipment requirements. **Modular Design:** A modular structure simplifies installation, maintenance, and scalability.

What is a wide temperature range LiFePO₄ battery?

This translates to lower replacement frequency and maintenance costs. Wide Temperature Range LiFePO₄ batteries operate reliably in temperatures ranging from -20°C to 60°C, making them suitable for the diverse and often extreme environments of telecom base stations.



What is the battery value of a base station outdoors



[What Size Battery for Base Station? , Huijue Group E-Site](#)

The \$4.7 Billion Question Haunting Telecom Engineers When designing base station power systems, engineers face a critical dilemma: How do we balance battery capacity with ...

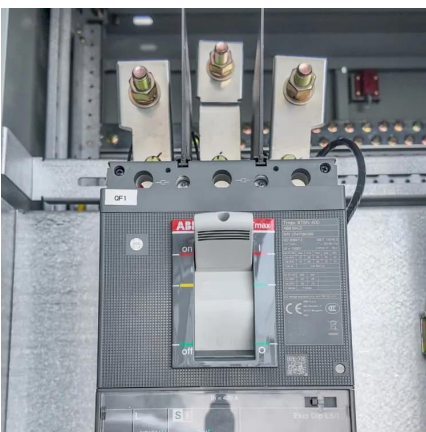
[Choosing the Right Battery for Base Stations: LiFePO4 vs.](#)

LiFePO4 batteries and lead-acid batteries are used in base stations, mainly considering that different discharge rates have less influence on the discharge capacity of such batteries, and ...



[How to Determine the Right Battery Capacity ...](#)

Mar 10, 2025 · Example: If a base station consumes 500W and needs 4 hours of backup at 48V, the required capacity is:
 $500W \times 4h / 48V = 41.67Ah$...



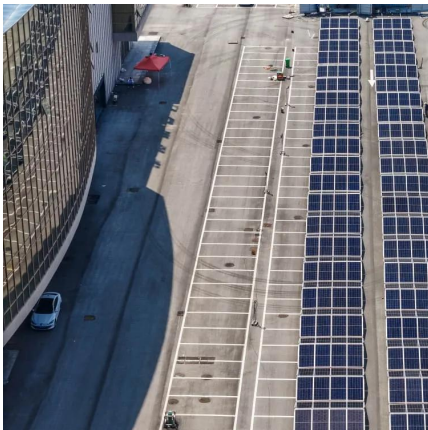
[Base Station Energy Storage](#)

A base station energy storage system is a compact, modular battery solution designed to ensure uninterrupted power supply for telecom base stations. It supports stable operations during grid ...



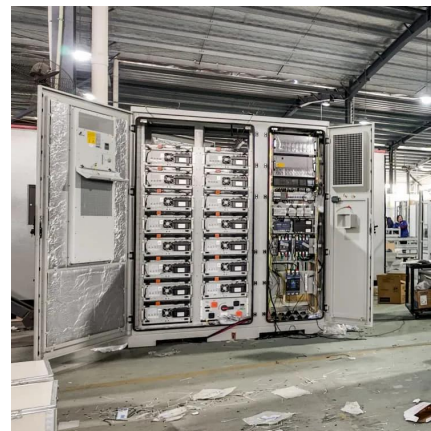
How to Determine the Right Battery Capacity for Telecom Base Stations

Mar 10, 2025 · Example: If a base station consumes 500W and needs 4 hours of backup at 48V, the required capacity is:
 $500W \times 4h / 48V = 41.67Ah$ Choosing a battery with a slightly higher ...



How much energy storage battery is used in base stations?

Aug 25, 2024 · Therefore, while evaluating battery costs, it is invaluable to consider the full lifecycle expenses and overall effectiveness of the chosen technology to make a prudent ...



Ultimate Guide to Base Station Power Selection: Lithium vs.

Nov 17, 2025 · With the large-scale rollout of 5G networks and the rapid deployment of edge-computing base stations, the core requirements for base station power systems--stability, cost ...





[Which Battery Is Best for Outdoor Power Stations?](#)

When selecting a battery for outdoor power stations, it's essential to understand that the battery is the core factor that determines the unit's performance. Whether for camping, hiking, or ...



[Mobile Energy Storage Battery: The Ultimate Guide](#)

6 days ago · A mobile energy storage battery, often called a portable power station, is a self-contained device that stores electrical energy for later use. Think of it as a much larger, more ...

[Telecom Base Station Backup Power Solution: Design Guide ...](#)

Jun 5, 2025 · Discover the 48V 100Ah LiFePO4 battery pack for telecom base stations: safe, long-lasting, and eco-friendly. Optimize reliability with our design guide.



How to Select the Best ESTEL Battery Backup for Base Stations

May 29, 2025 · Choose the best telecom battery backup systems by evaluating capacity, battery type, environmental adaptability, maintenance, and scalability for base stations.



[Telecom Base Station Backup Power Solution: ...](#)

Jun 5, 2025 · Discover the 48V 100Ah LiFePO4 battery pack for telecom base stations: safe, long-lasting, and eco-friendly. Optimize reliability with ...



Contact Us

For technical specifications, project proposals, or partnership inquiries, please visit: <https://eiei.pl>

Scan QR Code for More Information



<https://eiei.pl>