

What is a communication signal base station





Overview

A base station is an integral component of wireless communication networks, serving as a central point that manages the transmission and reception of signals between cellular networks and mobile devices. What is a base station in a mobile network?

Often hidden in plain sight on rooftops or towers, base stations are the backbone of modern mobile networks. What Is a Base Station?

A base station is a fixed point of communication between mobile devices and the wider telecom network. It transmits and receives radio signals, enabling your phone to access voice, data, and internet services.

Why is a base station important in wireless communication?

A base station is fundamental in wireless communication, because it facilitates the connection between your device and the wider network. Without base stations, mobile data and voice services would be impossible, as there would be no infrastructure to handle the transmission of signals.

What is a base station and how does it work?

A base station is a fixed point of communication between mobile devices and the wider telecom network. It transmits and receives radio signals, enabling your phone to access voice, data, and internet services. Together, thousands of base stations form a seamless web of coverage known as a cellular network. How Does It Work?

.

Is a base station a transmitter or broadcast point?

Base stations are generally a transceiver, capable of sending and receiving wireless signals; otherwise, if they only transmitted signals out, they would be considered a transmitter or broadcast point. A base station will have one or more radio frequency (RF) antennas to transmit and receive RF signals to



other devices.



What is a communication signal base station



What Is the Role of a Base Station in Wireless Communication?

Jun 27, 2025 · Base stations are the backbone of wireless communication networks, playing a pivotal role in signal transmission, network reliability, and high-speed data connectivity. As ...

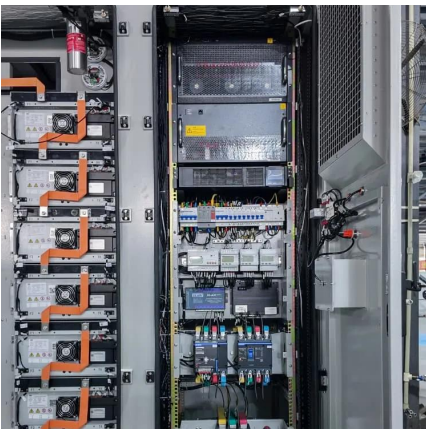
Base Stations

Jul 23, 2025 · The present-day tele-space is incomplete without the base stations as these constitute an important part of the modern-day scheme ...



What is a Base Station?

Jan 18, 2022 · A base station works as the main communication point for one or more wireless mobile devices. It is a fixed transceiver capable of ...



Base Stations

Jul 23, 2025 · The present-day tele-space is incomplete without the base stations as these constitute an important part of the modern-day scheme of wireless communications. They are ...



RBS (radio base station)

Jun 12, 2023 · These functions ensure efficient and reliable communication within the cellular network. In conclusion, a Radio Base Station (RBS) is a ...



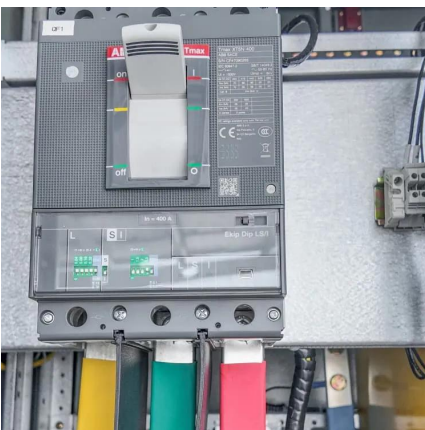
What Is A Base Station Antenna

Apr 22, 2024 · A base station antenna is used to transmit and receive radio signals between a base station and mobile devices or other base stations ...



Understanding Base Stations: The Backbone of Wireless Communication

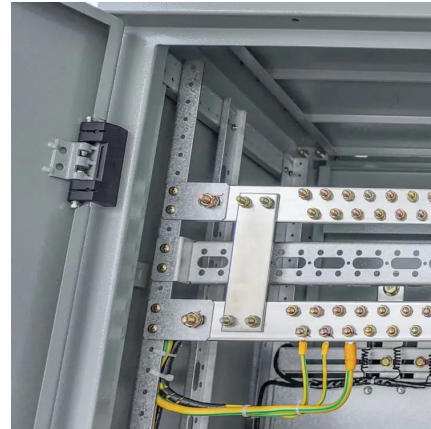
Jan 6, 2025 · In today's digital age, reliable and high-speed communication is more essential than ever. Whether it's for mobile phones, internet services, or IoT (Internet of Things) devices, ...





base station in 5g

Dec 8, 2023 · A 5G base station is a complex system that integrates advanced RF technology, digital signal processing, and network ...



What is a 5G Base Station?

Jun 21, 2024 · Radio Units: These units convert digital signals into radio waves and vice versa, facilitating wireless communication. Baseband ...

What is Telecommunication Base Station

The existence of a base station is as important as water and electricity, as the electromagnetic waves it emits wrap around us like air. Quickly and ...



What is a base station?

Mar 4, 2021 · In telecommunications, a base station is a fixed transceiver that is the main communication point for one or more wireless mobile client devices.



What is a base station?

Mar 4, 2021 · In telecommunications, a base station is a fixed transceiver ...

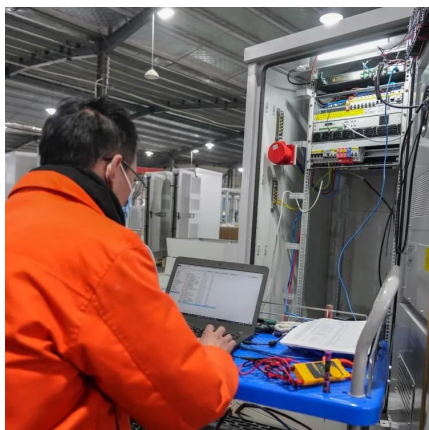


Base Station's Role in Wireless Communication Networks

What is a base station? A base station is a critical component of wireless communication networks. It serves as the central point of a network that connects various devices, such as ...

What Does a Base Station Do and Why Is It Essential for ...

Sep 5, 2025 · A base station is a fixed point of communication between mobile devices and the wider telecom network. It transmits and receives radio signals, enabling your phone to access ...



What is a Base Station? -- From Communication Core to ...

Aug 19, 2025 · The base station is an indispensable piece of infrastructure in the mobile communication network, silently supporting every phone call, message, and network ...



[What Is a Base Station? Definition and How It Works](#)

Oct 10, 2025 · The modern world relies on seamless wireless communication, supported by an extensive infrastructure. This infrastructure allows billions of mobile devices to connect ...



[What are Base Station in Telecommunications?](#)

Nov 21, 2025 · The Role and Importance of Base Stations Base stations enable voice, data, and internet access. They transmit radio signals within a set area. You stay connected as you ...

[What is the difference between Base Station ...](#)

In summary, both base stations and relay stations play indispensable roles in wireless communication systems. As the core of mobile communication ...



[Base Stations and Cell Towers: The Pillars of Mobile ...](#)

May 16, 2024 · Key Functions of Base Stations and Cell Towers Signal Transmission and Reception Base stations use antennas mounted on cell towers to send and receive radio ...



What is Base Station?

Nowadays, networking has become a crucial part of our daily lives. To implement network services for users, base station plays an essential role ...



Base Station's Role in Wireless Communication Networks

The base station transmits and receives signals, ensuring seamless communication over radio frequencies. In essence, it acts as the intermediary between the user and the network,

...

What Is A Base Station?

Apr 22, 2024 · A base station is an integral component of wireless communication networks, serving as a central point that manages the transmission and reception of signals between ...



Contact Us

For technical specifications, project proposals, or partnership inquiries, please visit:
<https://eiei.pl>



Scan QR Code for More Information



<https://eiei.pl>