

What is a communication micro base station





Overview

What is a base station in a wireless network?

A base station is a critical component of wireless communication networks. It serves as the central point of a network that connects various devices, such as smartphones, tablets, and computers. The base station transmits and receives signals, ensuring seamless communication over radio frequencies.

Why is a base station important in wireless communication?

A base station is fundamental in wireless communication, because it facilitates the connection between your device and the wider network. Without base stations, mobile data and voice services would be impossible, as there would be no infrastructure to handle the transmission of signals.

What is a micro base station?

It is usually set up in densely populated areas such as indoors, office buildings, shopping malls, subway stations, etc. to provide better signal coverage and capacity support. Micro base stations can enhance the quality and stability of wireless signals and provide higher data transmission speeds and lower latency.

What is a base station and how does it work?

A base station is a fixed point of communication between mobile devices and the wider telecom network. It transmits and receives radio signals, enabling your phone to access voice, data, and internet services. Together, thousands of base stations form a seamless web of coverage known as a cellular network. How Does It Work?



What is a communication micro base station



[5G Micro Base Stations in the Real World: 5 Uses You'll](#)

Oct 10, 2025 · Micro base stations enable real-time data collection and management for city services. Traffic lights, public transportation, and emergency systems rely on these units for ...

[What Is A Base Station?](#)

Apr 22, 2024 · A base station is an integral component of wireless communication networks, serving as a central point that manages the transmission and reception of signals between ...



[What is a Base Station? -- From Communication Core to ...](#)

Aug 19, 2025 · The base station is an indispensable piece of infrastructure in the mobile communication network, silently supporting every phone call, message, and network ...



[What Are Microcells? Learn about DASs](#)

Microcells are low-power cellular base stations, which serve as individual pieces of a cellular network and/or a distributed antenna system (DAS).



[Types of Base Stations](#)

Jul 23, 2025 · Base stations are one of the widely used components in the field of wireless communication and networks. It is an access point or ...



Understanding Base Stations: The Backbone of Wireless Communication

Jan 6, 2025 · In today's digital age, reliable and high-speed communication is more essential than ever. Whether it's for mobile phones, internet services, or IoT (Internet of Things) devices, ...



[What Is a Base Station? Definition and How It Works](#)

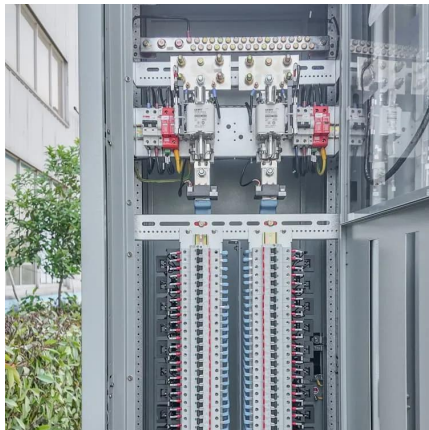
Oct 10, 2025 · A base station is a fixed transceiver that serves as the central communication point for mobile devices within a defined geographical area, known as a cell. It is sometimes called ...





[What Does a Base Station Do and Why Is It Essential for ...](#)

Sep 5, 2025 · What Is a Base Station? A base station is a fixed point of communication between mobile devices and the wider telecom network. It transmits and receives radio signals, ...

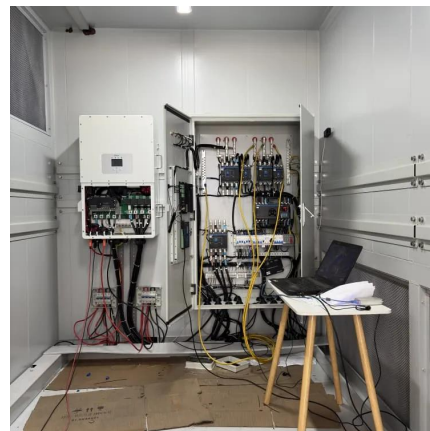


What Is the Role of a Base Station in Wireless Communication?

Jun 27, 2025 · Base stations are the backbone of wireless communication networks, playing a pivotal role in signal transmission, network reliability, and high-speed data connectivity. As ...

Low-Carbon Sustainable Development of 5G Base Stations in ...

May 4, 2024 · For instance, Guo et al. (2022b) utilized LMDI decomposition analysis to estimate carbon emissions from 5G base stations in China, while Ding et al. (2022) conducted the life ...



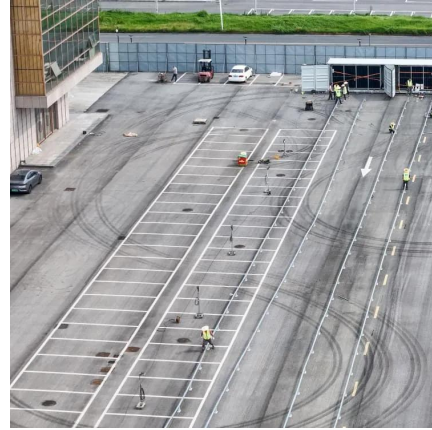
[Macrocell vs. Small Cell vs. Femtocell: A 5G ...](#)

Oct 20, 2023 · 5G networks also use macrocells, such as cell towers, for connectivity. These larger base stations enable lower 5G frequencies, ...



Base Station's Role in Wireless Communication Networks

What is a base station? A base station is a critical component of wireless communication networks. It serves as the central point of a network that connects various devices, such as ...



Macro Base Station

A 'Macro Base Station' is a type of base station in wireless communication systems that is responsible for waking up sleeping small base stations (SBSs) when there are multiple user ...

Base Stations

Jul 23, 2025 · The present-day tele-space is incomplete without the base stations as these constitute an important part of the modern-day scheme of wireless communications. They are ...



pimrc2010_final

Apr 8, 2022 · Concerning energy efficiency, utilizing micro base stations with their smaller power consumption capabilities appear promising. In this paper we study various homogeneous and ...



[Base Stations: The Core and Future of Telecom Networks](#)

Sep 12, 2025 · A telecom base station, also known as a mobile communication base station, is a wireless communication device comprised of antennas, transmitters, and controllers. It ...



Base Stations

Jul 23, 2025 · The present-day tele-space is incomplete without the base stations as these constitute an important part of the modern-day scheme ...

[What is a 5G Base Station?](#)

Jun 21, 2024 · As the world continues its transition into the era of 5G, the demand for faster and more reliable wireless communication is ...



[BTS \(base station transceiver\)](#)

Mar 6, 2023 · BTS, or Base Station Transceiver, is a critical component in modern mobile communication networks. BTS is responsible for ...



4 types of Base stations

Macro cell, Micro cell, Pico cell and Femto cell are 4 types of base stations in wireless communication networks.



Contact Us

For technical specifications, project proposals, or partnership inquiries, please visit:
<https://eiei.pl>

Scan QR Code for More Information



<https://eiei.pl>