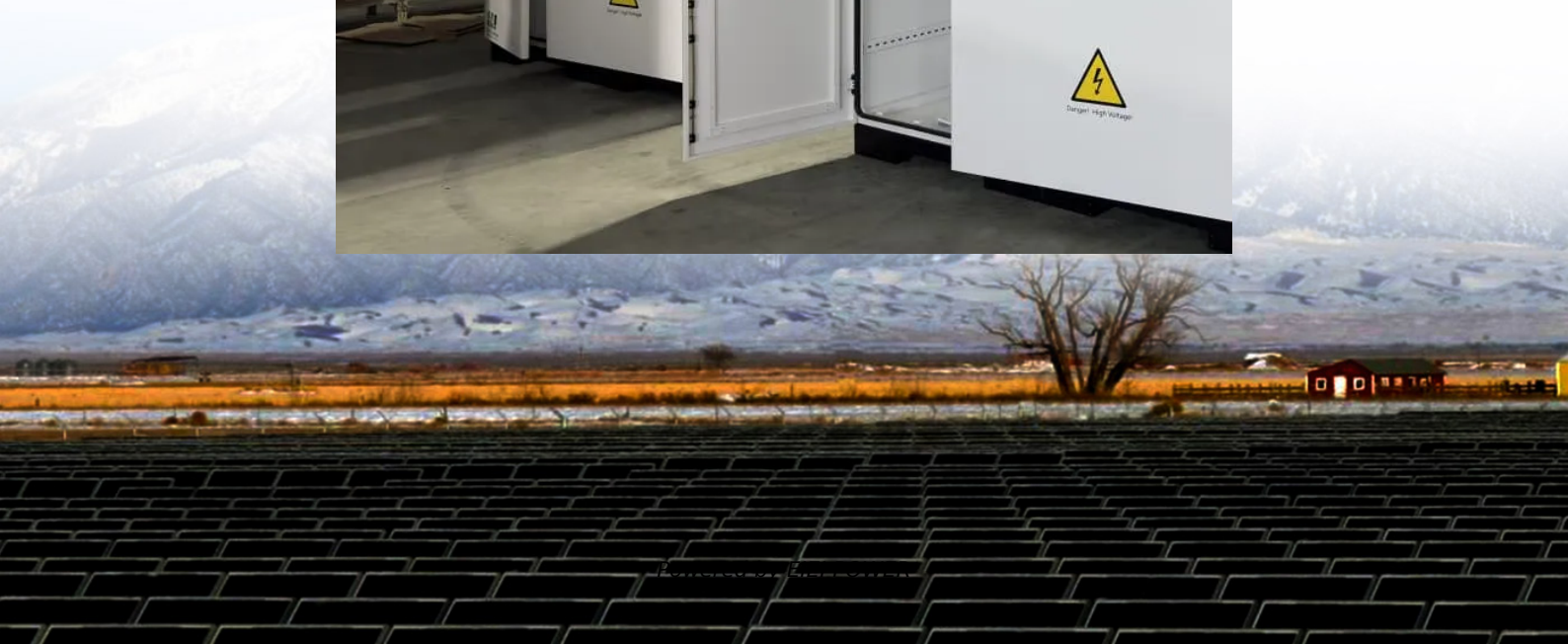


Update speed of wind-solar complementary chips for solar container communication stations





Overview

What is the maximum integration capacity of wind and solar power?

At this ratio, the maximum wind-solar integration capacity reaches 3938.63 MW, with a curtailment rate of wind and solar power kept below 3 % and a loss of load probability maintained at 0 %. Furthermore, under varying loss of load probabilities, the total integration capacity of wind and solar power increases significantly.

How to optimize wind and solar energy integration?

The optimization uses a particle swarm algorithm to obtain wind and solar energy integration's optimal ratio and capacity configuration. The results indicate that a wind-solar ratio of around 1.25:1, with wind power installed capacity of 2350 MW and photovoltaic installed capacity of 1898 MW, results in maximum wind and solar installed capacity.

Can a multi-energy complementary power generation system integrate wind and solar energy?

Simulation results validated using real-world data from the southwest region of China. Future research will focus on stochastic modeling and incorporating energy storage systems. This paper proposes constructing a multi-energy complementary power generation system integrating hydropower, wind, and solar energy.

Do wind and solar power complement each other well?

It is clear that regardless of the wind and solar curtailment rate, the optimal installed capacity ratio is close to 1:1. This indicates that wind power and solar power complement each other well based on typical daily output data selected from the entire year, thereby demonstrating the necessity of simultaneous development of wind and solar power.



Update speed of wind-solar complementary chips for solar containe

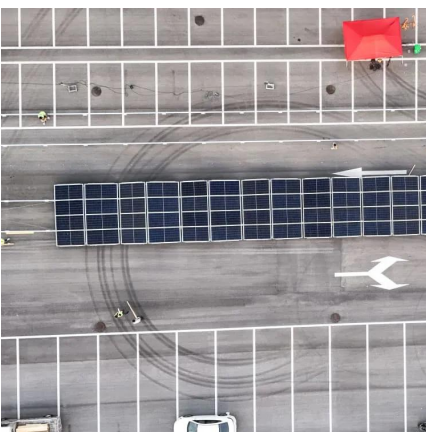


[Optimal Design of Wind-Solar complementary power ...](#)

Dec 15, 2024 · By constructing a complementary power generation system model composed of large-scale hydroelectric power stations, wind farms, and photovoltaic power stations, and ...

[Frontiers , Operating characteristics analysis and capacity](#)

Dec 29, 2023 · Operating characteristics analysis and capacity configuration optimization of wind-solar-hydrogen hybrid multi-energy complementary system



[Communication base station wind and solar ...](#)

Nov 21, 2025 · How to make wind solar hybrid systems for telecom stations? Realizing an all-weather power supply for communication base stations improves signal facilities' stability and ...

The latest requirements for wind and solar complementary ...

How to measure complementarity between wind speed and radiation?The Kendall CC, Spearman CC, and fluctuation coefficient are combined to construct a comprehensive measure of the ...



[Frontiers , Operating characteristics analysis ...](#)

Dec 29, 2023 · Operating characteristics analysis and capacity configuration optimization of wind-solar-hydrogen hybrid multi-energy complementary ...



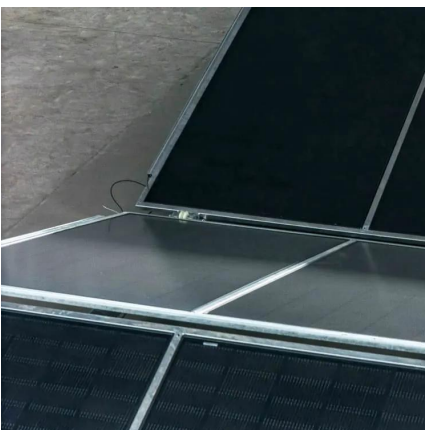
[A Vertical-axis Wind-solar Complementary Power ...](#)

Apr 27, 2025 · This paper systematically expounds the composition of the wind-solar hybrid power generation system and the characteristics of each part, proposes a new type of vertical axis ...



[Design of a Wind-Solar Complementary Power Generation ...](#)

Apr 27, 2025 · In order to improve the utilization efficiency of wind and photovoltaic energy resources, this paper designs a set of wind and solar complementary power generation ...





(PDF) Optimization and improvement method for complementary ...

Aug 1, 2024 · Optimization and improvement method for complementary power generation capacity of wind solar storage in distributed photovoltaic power stations



[Wind-solar hybrid for outdoor communication base ...](#)

Dec 8, 2025 · Integrated Solar-Wind Power Container for Communications This large-capacity, modular outdoor base station seamlessly integrates photovoltaic, wind power, and energy ...



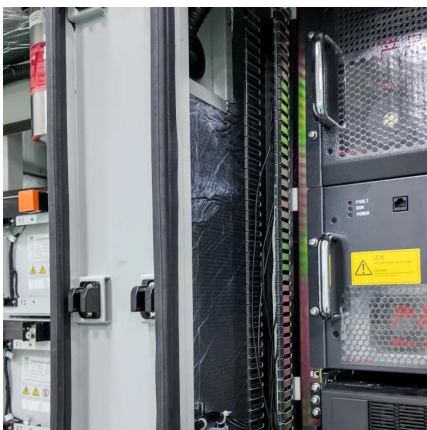
[Matching Optimization of Wind-Solar Complementary Power ...](#)

Sep 23, 2024 · The intermittency, randomness and volatility of wind power and photovoltaic power generation bring trouble to power system planning. The capacity configuration of integrated ...



[Optimization and improvement method for complementary ...](#)

Aug 1, 2024 · Optimization and improvement method for complementary power generation capacity of wind solar storage in distributed photovoltaic power stations Weixiu Lin, Feng Li, ...





Contact Us

For technical specifications, project proposals, or partnership inquiries, please visit:
<https://eiei.pl>

Scan QR Code for More Information



<https://eiei.pl>