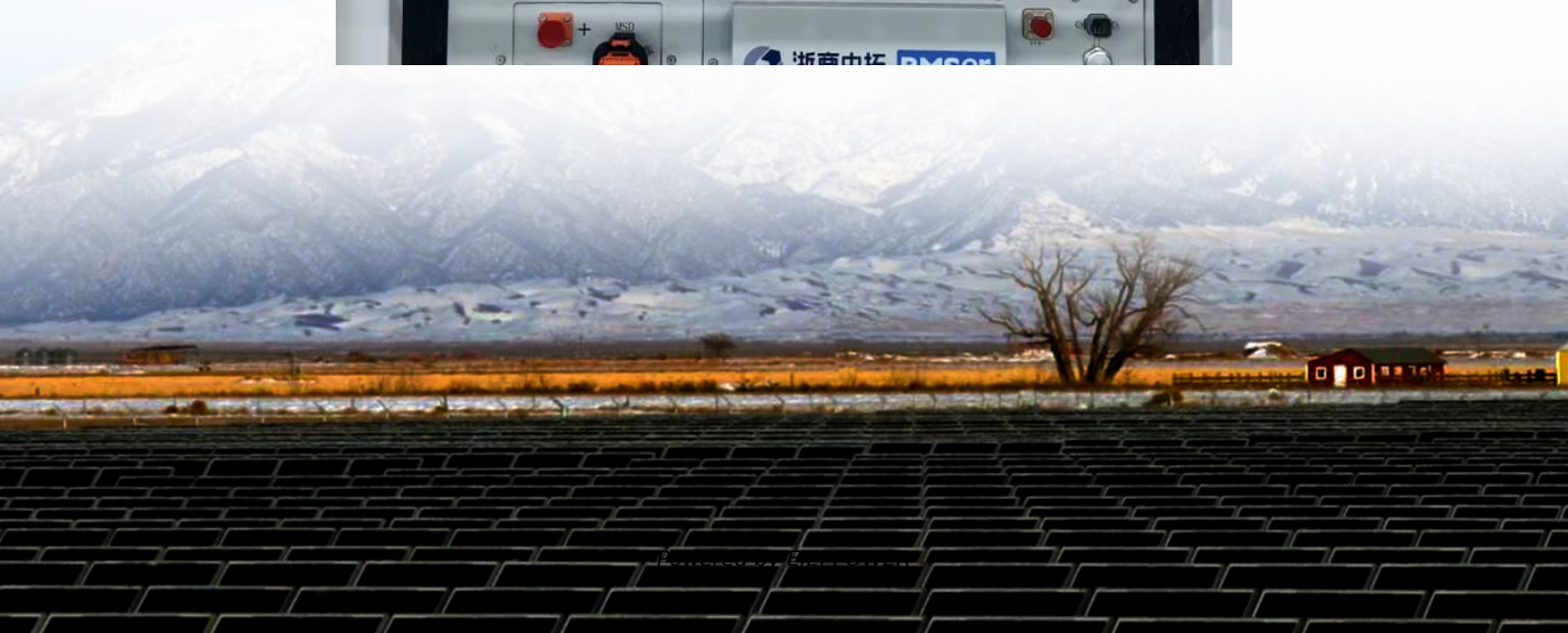


The voltage of solar panels connected in series is infinite





Overview

A Solar Photovoltaic Module is available in a range of 3 WP to 300 WP. But many times, we need power in a range from kW to MW. To achieve such a large power, we need to connect N-number of module.

What happens if a solar panel is connected in series?

That is connecting solar panels in series increases the voltage of the system, so two panels connected in series will produce double the voltage as compared to just one panel but while the voltages add up, the amperage of each panel stays the same, that is currents in series do not add up.

Should 12V solar panels be wired in series or parallel?

12V solar panels can be wired in either series or parallel, depending on your system requirements. For higher voltage systems, wire them in series to increase the overall voltage. For increased current and better performance under shaded conditions, wire them in parallel.

What is a series connected solar panel?

Series connected solar panels are called a string, thus the use of the word “string” means that the panels are connected in series. Note that series strings of PV panels can be connected in parallel to increase the total current and therefore more power output. Here ALL the solar PV panels are of the same type and power rating.

How PV panels are connected in series configuration?

The following figure shows PV panels connected in series configuration. With this series connection, not only the voltage but also the power generated by the module also increases. To achieve this the negative terminal of one module is connected to the positive terminal of the other module.



The voltage of solar panels connected in series is infinite



Double the Power: How Series-Connected Solar Panels Boost ...

Aug 17, 2025 · Connecting two solar panels in series creates a fundamental building block for efficient photovoltaic systems, doubling the voltage output while maintaining consistent current ...

Solar Panels in Series vs. Parallel: 6 Difference and Which Is ...

Jun 18, 2025 · Solar energy systems rely heavily on how solar panels are connected within the array. The wiring configuration impacts the system's voltage, current, overall performance, and ...



[Series Connected Solar Panels For Increased Voltage](#)

May 25, 2024 · Series Connected Solar Panels How Series Connected Solar Panels Increase Voltage Understanding how series connected solar panels can produce more output voltage is ...



[Double the Power: How Series-Connected ...](#)

Aug 17, 2025 · Connecting two solar panels in series creates a fundamental building block for efficient photovoltaic systems, doubling the voltage ...



[Series-Connected Solar Panels: Double Your ...](#)

Apr 8, 2025 · Graph comparing power output between single panel and series-connected panels Connecting two solar panels in series offers a ...



[Series Connected Solar Panels For Increased ...](#)

May 25, 2024 · Series Connected Solar Panels How Series Connected Solar Panels Increase Voltage Understanding how series connected solar ...



Series, Parallel & Series-Parallel Connection of Solar Panels

2 days ago · What is a Solar Photovoltaic Array? A Solar Photovoltaic Module is available in a range of 3 WP to 300 WP. But many times, we need power in a range from kW to MW. To ...





[How Do Solar Panels Connect In Series Vs Parallel?](#)

2 days ago · Solar panels connected in series increase system voltage (VOC additive), while parallel connections boost current (ISC additive). For example, two 40V/10A panels in series ...



[How many volts are connected in series with solar panels?](#)

Mar 6, 2024 · The voltage connected in series with solar panels can vary widely based on the specific configuration and applications, but several key points should be noted: 1) **Solar ...

[Solar Panel Series vs Parallel: Which is Better?](#)

Discover the optimal choice between solar panel series vs parallel configurations. Learn how to maximize efficiency and output with our ...



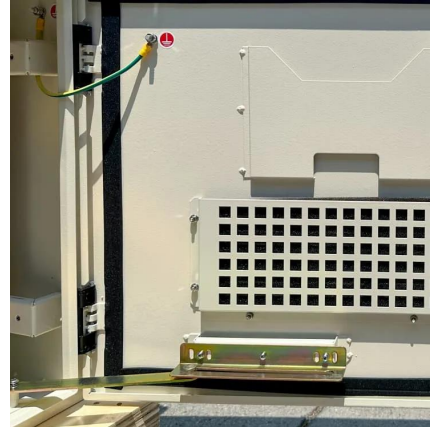
[Solar Panel Series vs Parallel: Which is Better? Renogy US](#)

Discover the optimal choice between solar panel series vs parallel configurations. Learn how to maximize efficiency and output with our comprehensive guide on solar panel series vs parallel ...



[Series-Connected Solar Panels: Double Your Power Output ...](#)

Apr 8, 2025 · Graph comparing power output between single panel and series-connected panels Connecting two solar panels in series offers a practical and efficient solution for increasing ...



[How To Wire Solar Panels In Series Vs.](#)

How you wire solar panels will influence how much energy a solar system produces. Find out if wiring in series, parallel, or both, is best for you.

[What is a Series or Parallel Connection in Solar Panels?](#)

Aug 29, 2025 · A series connection links solar panels end-to-end. Technically, you connect the positive terminal of one panel directly to the negative terminal of the next. Voltage Behavior: ...



[How To Wire Solar Panels In Series Vs. Parallel](#)

How you wire solar panels will influence how much energy a solar system produces. Find out if wiring in series, parallel, or both, is best for you.



Contact Us

For technical specifications, project proposals, or partnership inquiries, please visit:
<https://eiei.pl>

Scan QR Code for More Information



<https://eiei.pl>