

The solar inverter automatically cuts off power in the afternoon





Overview

Do solar inverters shut off when the grid goes down?

Most solar inverters are sold with an 'automatic shut off switch' that detects when the power grid goes down and shuts down the entirety of the solar power system to protect electricity line workers.

Why does a solar inverter shut down automatically?

Therefore, the inverter shuts down automatically for safety reasons. This is due to the following: the electricity generated by the solar panels is temporarily stored in the inverter. The inverter is constantly measuring the frequency and the voltage from the grid and adjusts the generated power to this.

Why do solar inverters automatically switch off during a power cut?

During a power cut engineers will be working on the grid and if solar panels or batteries are in operation there is a risk the engineers could be electrocuted by the electricity being generated. This is why solar inverters are designed to automatically switch off when a power cut is detected.

What happens if a solar inverter goes out?

Your solar system - including the inverter - is connected to the power grid. If it continues to run during a power outage, it will supply electricity to the power lines and put the lives of technicians at risk. For this reason inverter systems have an automatic shutdown feature.



The solar inverter automatically cuts off power in the afternoon

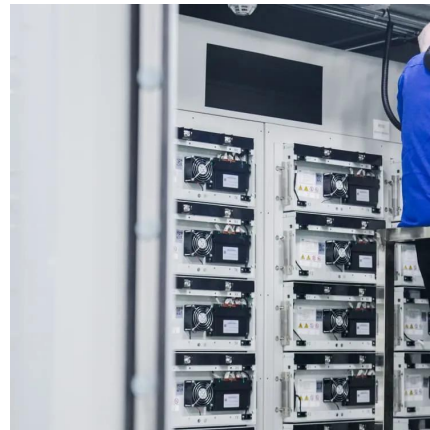


Will the Solar Inverter Automatically Stop Working at Night?

Nov 4, 2024 · Explore how solar inverters operate at night and discover the best solar inverter for home use to maximize your solar energy efficiency.

Do Solar Inverters Turn Off At Night?

Have you ever wondered if solar inverters turn off at night? The answer may surprise you! Solar inverters, the essential components of solar power ...



Autarco solar inverters at night

Dec 4, 2025 · So lar inverter turning off at night is a normal and necessary function for solar inverters so that they can conserve energy and protect the system from overloading.

Does the Solar Inverter Turn Off at Night?

3 days ago · This article explains whether solar inverter will turn off at night, why inverter automatically enter standby or shut off mode at night due to insufficient solar voltage, and how ...



Why does an inverter shut down?

The allowable voltage in the connection cable of the inverter is being exceeded, because the cable is too thin. The inverter is connected to the phase with the highest voltage. Checklist for ...



Solar inverter turn off at night + reasons

Dec 7, 2024 · Why solar inverter shut off at night
Solar inverter turning off at night is a normal and necessary function for solar inverters so that they ...



5 Reasons Your Inverter Keeps Shutting Off

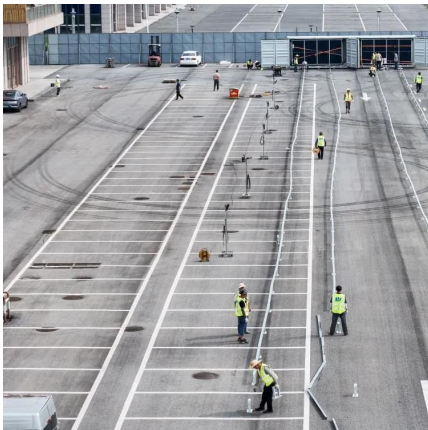
Solar inverters tied to the grid automatically shut down during a power failure for safety reasons. If there is a power outage in your area or flickers on and off, your inverter will shut down.





What Happens to Solar Inverters at Night? Do ...

Apr 23, 2024 · Among the essential components of a solar power system, inverters play a pivotal role. They convert the direct current (DC) ...

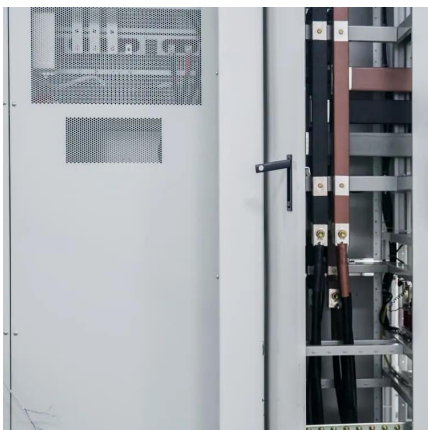


5 Reasons Your Inverter Keeps Shutting Off

Solar inverters tied to the grid automatically shut down during a power failure for safety reasons. If there is a power outage in your area or flickers on ...

Why does an inverter shut down?

The allowable voltage in the connection cable of the inverter is being exceeded, because the cable is too thin. The inverter is connected to the ...



Do Solar Inverters Shut Down At Night

1 day ago · Solar inverters do not shut down completely at night, but their operational status varies based on factors like energy production, grid connectivity, and system design. During ...



Solar Works Morning, Fails Afternoon

3 days ago · If your solar works in the morning but shuts down in the afternoon, heat or voltage issues may be to blame. Learn how to fix midday solar power drop-offs.



Do Solar Inverters Turn Off At Night?

Have you ever wondered if solar inverters turn off at night? The answer may surprise you! Solar inverters, the essential components of solar power systems, do not actually turn off when the ...

What Happens to Solar Inverters at Night? Do They Shut ...

Apr 23, 2024 · Among the essential components of a solar power system, inverters play a pivotal role. They convert the direct current (DC) electricity generated by solar panels into alternating ...



Solar inverter turn off at night + reasons

Dec 7, 2024 · Why solar inverter shut off at night
Solar inverter turning off at night is a normal and necessary function for solar inverters so that they can conserve energy and protect the system ...



Contact Us

For technical specifications, project proposals, or partnership inquiries, please visit:
<https://eiei.pl>

Scan QR Code for More Information



<https://eiei.pl>