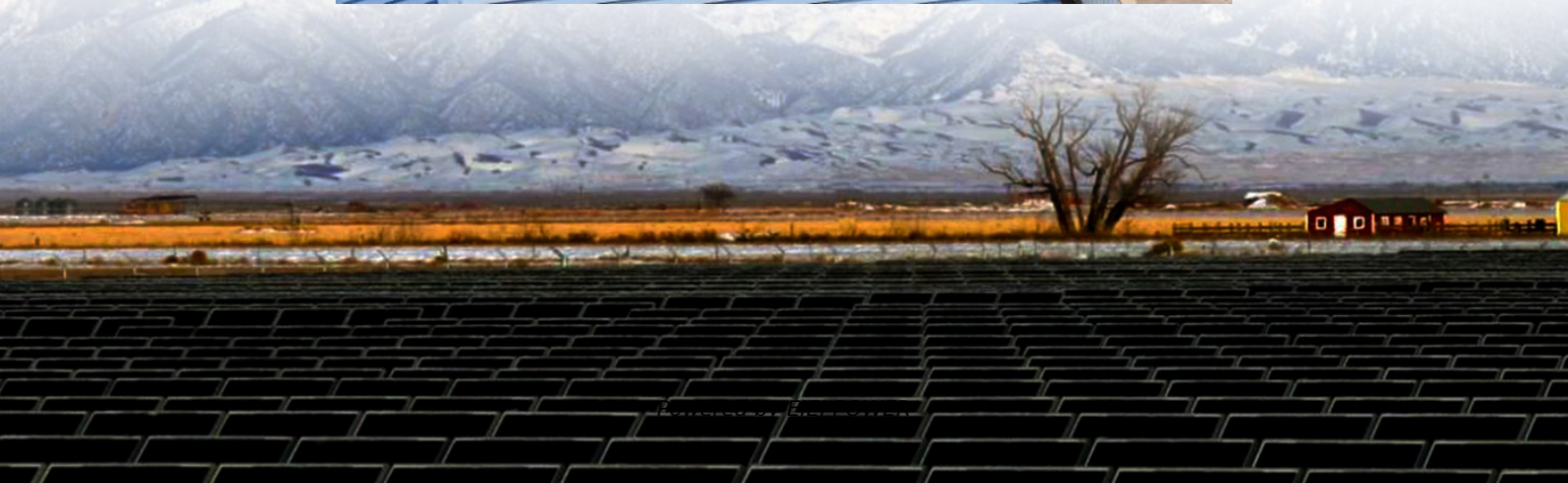


The real-time power of the inverter is greater than the rated power





Overview

What do kW and kVA mean in inverter specifications?

kW refers to the real or usable power output of an inverter. kVA represents the total power capacity it can carry, including power lost in phase difference (reactive power). For example, an inverter rated at 10 kVA with a power factor of 0.8 can only deliver 8 kW of real power.

What is rated output power of inverter?

The rated output power of inverter is the continuous output power, which refers to the output power of the inverter under the rated voltage current. It is the power that can be continuously and stably output for a long time.

What happens if an inverter overloads?

If the total load exceeds this value, the inverter will be damaged due to constant overloading. What is Peak Power?

Peak Power, also known as Surge Power, represents the maximum power value that the inverter can deliver in a short period (usually 0.5~5 seconds).

What is peak power in inverter?

Peak power is usually two to three times the rated power. The rated power is the power at which the inverter is stabilized over a long period, whereas the peak power is only used for short periods of high power demand. Learn More: [How does an inverter work](#) [What causes the inverter to overload?](#)



The real-time power of the inverter is greater than the rated power



What is the difference between rated power and peak power of inverter?

Aug 24, 2020 · The rated output power of inverter is the continuous output power, which refers to the output power of the inverter under the rated voltage current. It is the power that can be ...

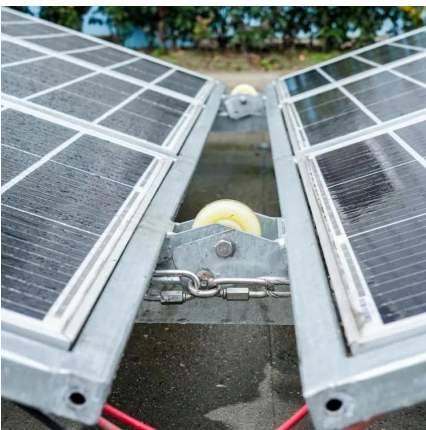
[FAQ About Inverter Oversizing](#)

Jan 24, 2024 · Q: What is oversizing? A: In a solar system, when the installed solar panel capacity is higher than the rated capacity of the inverter, we ...



The real-time power of the inverter is greater than the rated power

Apr 7, 2009 · Power limiting is an inverter function that occurs when the available power from the array is greater than the inverter's rated input power. Power limiting is often called "clipping" ...



On the sizing of PV inverters with reactive power capability ...

Sep 1, 2023 · This paper aims to determine the minimum inverter rated power when applied to regulate the installation PF considering a real load mission profile as a case study. ...



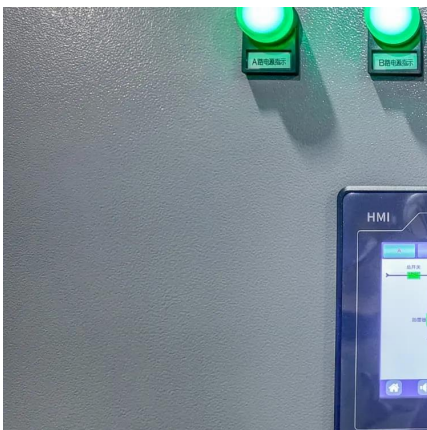
Inverter Peak Power vs Rated Power: What it is and Why It ...

Apr 21, 2025 · The rated power is the power at which the inverter is stabilized over a long period, whereas the peak power is only used for short periods of high power demand. Learn More:

...

Setting Reactive Power Control

The Q-U hysteresis curve (CEI0-16) control mode is the Italian standard CEI0-16 version of the Q-U characteristic curve. It dynamically adjusts the output reactive power of the inverter or Smart ...



The subtle relationship between inverter

...

Oct 15, 2024 · 5. Example Assume that the rated power of an off-grid inverter is 5KW. If the load is a 5KW resistive load (such as a resistance heater), ...



Inverter Knowledge , The Relationship Between PV Input Power & Rated Power

Apr 9, 2025 · Most inverters on the market allow PV input power to exceed the rated output power, with an oversizing ratio typically ranging from 1.2 to 2.0 times, depending on the design.



[Understanding Inverter Power Ratings: kW vs kVA Explained](#)

4 days ago · kW (kilowatts) measures real power--what actually powers your appliances. kVA (kilovolt-amps) measures apparent power--the total power the inverter handles, including both ...

[Understanding Inverter Power Ratings: kW vs ...](#)

4 days ago · kW (kilowatts) measures real power--what actually powers your appliances. kVA (kilovolt-amps) measures apparent power--the total ...



[What is the difference between rated power ...](#)

Aug 24, 2020 · The rated output power of inverter is the continuous output power, which refers to the output power of the inverter under the rated ...



[Inverter Peak Power vs Rated Power: What it ...](#)

Apr 21, 2025 · The rated power is the power at which the inverter is stabilized over a long period, whereas the peak power is only used for short periods ...



[Inverter Knowledge , The Relationship ...](#)

Apr 9, 2025 · Most inverters on the market allow PV input power to exceed the rated output power, with an oversizing ratio typically ranging from 1.2 ...

[Why Does Power Inverter Output Power Not Reach Rated Power](#)

Jun 12, 2025 · Wondering why your inverter isn't delivering full power? Learn the top reasons why power inverters fall short of rated output and how to fix them. Expert tips included!



[FAQ About Inverter Oversizing](#)

Jan 24, 2024 · Q: What is oversizing? A: In a solar system, when the installed solar panel capacity is higher than the rated capacity of the inverter, we refer it as inverter oversizing. To ...



The subtle relationship between inverter power and load power

Oct 15, 2024 · 5. Example Assume that the rated power of an off-grid inverter is 5KW. If the load is a 5KW resistive load (such as a resistance heater), then the inverter can easily meet the ...



Contact Us

For technical specifications, project proposals, or partnership inquiries, please visit:
<https://eiei.pl>

Scan QR Code for More Information



<https://eiei.pl>