

The function of the base station power control host computer





Overview

What is a base station controller?

Base station controllers (BSCs) are integral to the mobile telecommunications infrastructure, providing essential management and control functions that ensure efficient network operation. They handle the allocation of radio channels, which is crucial for reducing interference and optimising the use of available spectrum.

What is a base station system?

A base station system consists of a collection of equipment (transceivers, controllers, etc.), for communicating with MTs in a certain area. A BSS has one base station controller (BSC), and one or more base transceiver stations (BTS) controlled by the BSC. A base transceiver station (BTS) is a network component that serves one cell.

What is a base station controller (BSC)?

In today's world of mobile communication, the Base Station Controller (BSC) plays a key role in ensuring your phone calls and data transfer happen smoothly. The BSC is a vital part of the network infrastructure that supports wireless communication by connecting and managing multiple base stations within the mobile network.

What is a base station interface?

Interfaces, on the other hand, are the points of interaction between the base station controller (BSC) and other network components like the Mobile Switching Centre (MSC) and base transceiver stations (BTS). These interfaces allow for the seamless transfer of data and control information, maintaining network synchronisation and integrity.



The function of the base station power control host computer



[The important role of the host computer in ...](#)

Dec 31, 2024 · The host computer, also known as monitoring computer or operator station, is a computer system with powerful data processing ...

GSM

It controls the power transmission of the BSS and MS in its area. The function of the BSC is to allocate the necessary time slots between the BTS and the MSC. It is a switching device that ...



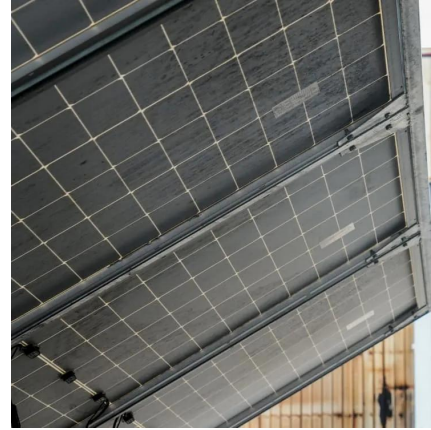
The important role of the host computer in the industrial control

Dec 31, 2024 · The host computer, also known as monitoring computer or operator station, is a computer system with powerful data processing capability, graphical display interface and ...



What is Base Station Controller? A Simple Guide for Everyone

Aug 19, 2025 · Power control is another key function, as the BSC adjusts signal strength to maintain optimal quality without wasting energy or causing unnecessary interference. Effective ...



Base station subsystem

The base station subsystem (BSS) is an important part of the GSM system. The base station subsystem mainly includes base station controller (BSCe3), code speed conversion unit ...



The meaning and function of the host computer, the slave computer ...

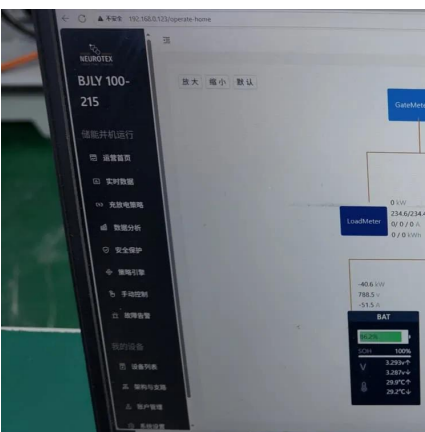
...

These protocols are usually used in short-distance, real-time communication scenarios. Hierarchy of system architecture Hierarchical architecture: The host computer, BMS and lower computer ...



Base Station Controller (BSC)

Oct 4, 2025 · A Base Station Controller (BSC) is a network component in a cellular network that is responsible for controlling one or more base transceiver stations (BTSs). The BSC is ...





Understanding Base Station Controller Architecture: A ...

Oct 3, 2024 · Base station controller architecture plays a crucial role in the functioning of mobile networks, serving as the intermediary between mobile devices and the core network. It ...



Base station subsystem

The base station subsystem (BSS) is an important part of the GSM system. The base station subsystem mainly includes base station controller ...

Base Stations

Jul 23, 2025 · Power Supply: The power source provides the electrical energy to base station elements. It often features auxiliary power supply ...



Base Stations

Jul 23, 2025 · Power Supply: The power source provides the electrical energy to base station elements. It often features auxiliary power supply mechanisms that guarantee operation in ...



Base Station Controller

Functionally, an RSS consists of a control function performed by the base station controller (BSC) and a transmitting/receiving function carried out by the base station transceiver (BTS) system.



PSOC Unit V: Computer Control in Power Systems

Preview text Unit - V Computer Control of Power Systems Need for Computer control of Power Systems: Power system is highly complicated interconnected system. The operation and ...

Contact Us

For technical specifications, project proposals, or partnership inquiries, please visit:
<https://eiei.pl>

Scan QR Code for More Information



<https://eiei.pl>