

The distance between the solar inverter and the ground





Overview

Most experts recommend installing inverters at a height between 0.5 and 2 meters above ground level. This range strikes a balance between visibility, accessibility, and safety: How far away should a solar panel inverter be?

When considering the solar panel inverter distance, one of the first things to remember is how far your inverter and battery are from the main electrical panel. For example, placing your inverter and battery in a guest house 100 feet away from the main panel can affect your system's performance. Voltage Drop and Efficiency.

How far should a solar panel inverter be from a guest house?

In conclusion, managing your solar panel inverter distance by storing the inverter and battery in a guest house and running the lines to the main panel over 100 feet is practical. This is true, provided the system is designed correctly.

How do I choose the right solar panel inverter?

Choosing the right inverter is essential for effectively managing your solar panel inverter distance. At Advanced Energy Systems, we recommend using high-quality inverters like the Victron Quattro 48/10,000. These inverters are designed to handle higher input voltages.

How far should an inverter be from the ground?

Regardless of the system, if you can place an inverter, you'll want it to have a free space of half a foot on either side and above. It's also smart to have the inverter be three feet off from the ground to keep it out of range of flood or rising water level incidents. You'll also want to be looking at how far the inverter is from the battery bank.



The distance between the solar inverter and the ground



[GRID CONNECTED PV SYSTEMS WITH BATTERY ENERGY ...](#)

May 22, 2023 · This section applies to any inverter that interconnects with a battery system. This includes PV battery grid connect inverters, battery grid connect inverters and stand-alone ...

[How Far Away Can Solar Panels Be From Inverter?](#)

Mar 9, 2025 · Solar inverters are designed to work primarily with solar panels as their energy source, while normal inverters can be used with multiple energy sources including grid ...



[How Far Can Solar Panels Be From An ...](#)

Sep 15, 2022 · An inverter should be installed as close to the solar panels as possible. The recommended distance is within 30 feet (9 meters). A ...

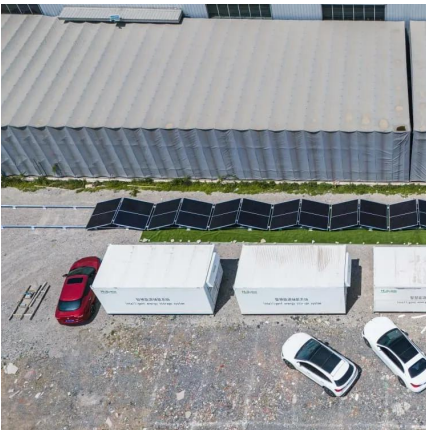
[Solis Seminar ?Episode 19?: How to Section ...](#)

Apr 28, 2021 · Solis is one of the world's largest and most experienced manufacturers of solar inverters supplying products globally for ...



[Solar Panel Inverter Distance: How Far Can They Be from ...](#)

1 day ago · When managing your solar panel inverter distance, the size of the wire you use becomes crucial. Larger gauge wires--such as 10 AWG or even 8 AWG--are commonly ...



[Distances from panels to inverter , DIY Solar Power Forum](#)

Jul 18, 2023 · With high voltage dc used on modern solar systems the distance between panels and inverters can be quite far 100s feet possible. Inverters and batteries should be close to the ...



[SPD for photovoltaic applications](#)

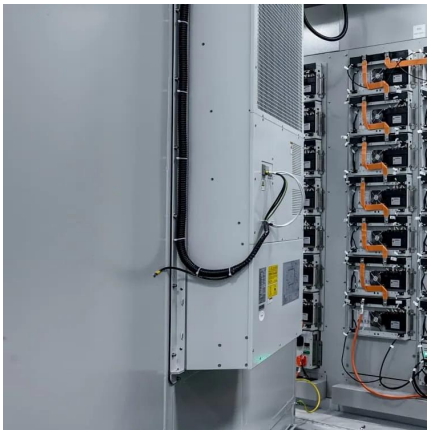
Dec 20, 2019 · The number and location of SPDs on the DC side depend on the length of the cables between the solar panels and inverter. The SPD should be installed in the vicinity of the ...





[Optimal Solar Inverter Placement for Efficiency & Longevity](#)

Sep 13, 2025 · Discover expert tips on solar inverter placement to maximize efficiency, lifespan, and safety. Learn optimal locations, clearance, and installation best practices.



[How Far Can Solar Panels Be From The House?](#)

Feb 5, 2024 · 1. Ideal Distance From The House: How Far Or Close Can Solar Panels Be To The House The ideal distance of solar panels from a

...

[Distance between photovoltaic inverter and ground](#)

The distance between the solar panels and the inverter can have a significant impact on the system's efficiency. Ideally, the inverter should be installed close to the solar array to minimize

...



[How to Calculate the Minimum Distance](#)

...

Oct 8, 2024 · Understand the importance of minimum installation distance for solar panels, calculation methods, and relevant regulations to ensure ...



[How far away can solar panels be from ...](#)

Nov 21, 2023 · The distance between solar panels and the inverter in a photovoltaic (PV) system can vary depending on factors such as system ...



[How Far Can Ground Mounted Solar Panels Be from Your ...](#)

Dec 23, 2024 · Factors Affecting the Distance Between Ground-Mounted Solar Panels and Your House Energy Loss in Wiring: The distance between your house and the ground-mounted ...

[Distance between solar panels to solar inverter](#)

May 10, 2024 · In general, keeping the distance between the solar panel array and the inverter as short as feasible, while considering the above factors, is recommended for best performance ...



[How Far Can Ground Mounted Solar Panels Be from Your ...](#)

Dec 24, 2024 · Energy Loss in Wiring: The distance between your house and the ground-mounted solar panels affects the wiring length needed to connect the panels to the inverter and ...



Solar Panel Inverter Distance: How Far Can They Be from ...

1 day ago · When considering your solar panel inverter distance, storing the inverter and batteries in a guest house is a practical decision, especially for safety and temperature control. ...

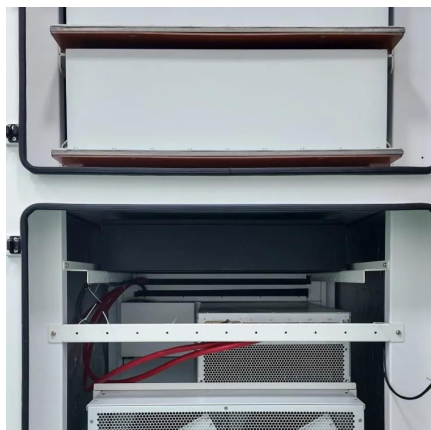


How Far Can Solar Panels Be From the Inverter?

Jul 15, 2025 · When considering solar energy systems, a common question arises: "how far away can solar panels be from inverter?" Understanding this distance is crucial for optimizing ...

How Far Can Solar Panels Be From Inverter

Jul 11, 2023 · Final Thoughts on the Distance Between Solar Panels and Inverters In a perfect world, solar panels could be placed any distance from inverters and work just fine. But ...



What is the maximum cable length for solar ...

Aug 30, 2023 · When talking about the maximum cable length for solar panels, we mean the length of the cable that extends from the ...



[How Far Can Solar Panels Be from an Inverter? What You ...](#)

Jun 25, 2023 · Want to know the ideal distance between your solar panels and inverter? Learn about the recommended distance, the consequences of exceeding it, and solutions for long ...



[How far away can solar panels be from inverter?](#)

Nov 21, 2023 · The distance between solar panels and the inverter in a photovoltaic (PV) system can vary depending on factors such as system design, cable length limitations, and electrical ...

Contact Us

For technical specifications, project proposals, or partnership inquiries, please visit: <https://eiei.pl>

Scan QR Code for More Information



<https://eiei.pl>