

St John s Communication Signal Base Station Project





Overview

What is a mobile base station?

A mobile base station, also called a base transceiver station (BTS), is a fixed radio transceiver in any mobile communication network or wide area network (WAN). The base station connects mobile devices to the network and routes them to other terminals in the network or to the core network of a mobile operator. Read more [Explore Mobile base](#).

Why are base stations important in cellular communication?

Base stations are important in the cellular communication as it facilitate seamless communication between mobile devices and the network communication. The demand for efficient data transmission are increased as we are advancing towards new technologies such as 5G and other data intensive applications.

What is a Base Transceiver Station (BTS)?

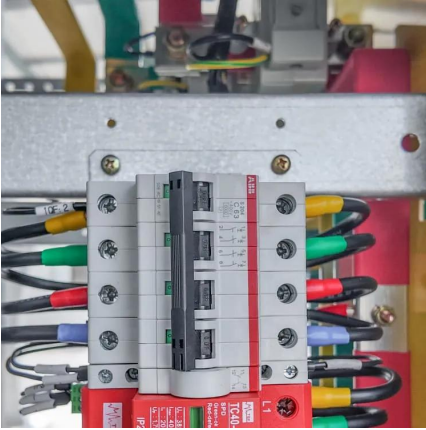
A base transceiver station (BTS) is a critical network component that serves as the primary hardware interface between mobile devices and the cellular network, facilitating wireless communication through radio transmission and reception within a defined area known as a cell.

What are the components of a base station?

The base station will have one or more RF antennas installed to transmit and receive RF signals from other devices. The block diagram of a base station typically includes the following key components: Baseband Processor: The baseband processor too deals with different communication protocols and interfaces with mobile network infrastructure.



St John s Communication Signal Base Station Project



[Communication Base Station Innovation Trends , Huijue ...](#)

Ethical Considerations in Network Evolution As we deploy zero-energy base stations powered by ambient RF signals, shouldn't we address electromagnetic hypersensitivity concerns? The ...

[Wireless Communication Base Station Location Selection ...](#)

Jun 9, 2024 · 1. Introduction Recently, with the rapid development of wireless communication technology, the enhancement of wireless network performance is concerned with meeting the ...

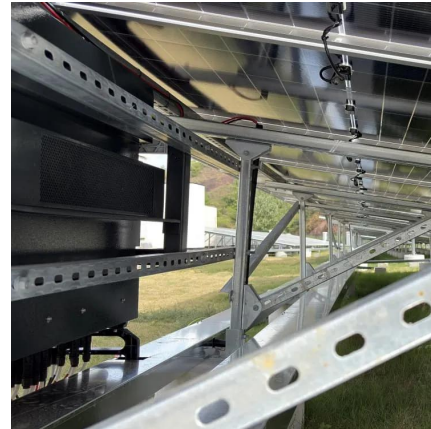


[Base Transceiver Station](#)

Introduction to Base Transceiver Station (BTS) in Computer Science Context A base transceiver station (BTS) is a critical network component that serves as the primary hardware interface ...

Base Stations

Jul 23, 2025 · The present-day tele-space is incomplete without the base stations as these constitute an important part of the modern-day scheme of wireless communications. They are ...



Research and Implementation of 5G Base Station ...

Oct 28, 2023 · Guoqing Chen, Xin Wang, and Guo Yang Abstract The application requirements of 5G have reached a new height, and the location of base stations is an important factor ...



Mobile base station , Application

Explore STMicroelectronics' mobile base station solutions, enhancing connectivity and performance for telecom networks.



Communication Base Station Site Planning Based on ...

May 28, 2023 · With the sharp development of mobile communication technology, the coverage area of existing base stations cannot meet the increasing demand of users, so it is significant ...





[arXiv:2207.09095v1 \[cs \] 19 Jul 2022](https://arxiv.org/abs/2207.09095v1)

Jan 23, 2023 · In particular, we consider a challenging scenario where the target may be a suspicious eavesdropper that potentially intercepts the communication-user information ...



Base stations and networks

5 days ago · Base stations enable mobile communications Mobile phones and other mobile devices require a network of base stations in order to function. The base station antennas ...



5G Communication Signal Based Localization with a Single Base Station

Nov 18, 2020 · With the growing demand for high accuracy indoor localization, the fifth generation (5G) wireless communication technology based localization attracts increasing attention. ...



Base stations and networks

Base Stations Enable Mobile Communications Antennas Are Placed in Various Locations More Mobile Devices Means More Base Stations Base Station Output Power Is Low Exposure Limits Are Set by Independent Organizations Exposure Levels Are Much Lower Than The Limits Public Access Is Restricted Where Needed No Adverse Health Effects According to The Who Mobile phones and other mobile devices require a network of base stations in order to function. The base station antennas transmit and





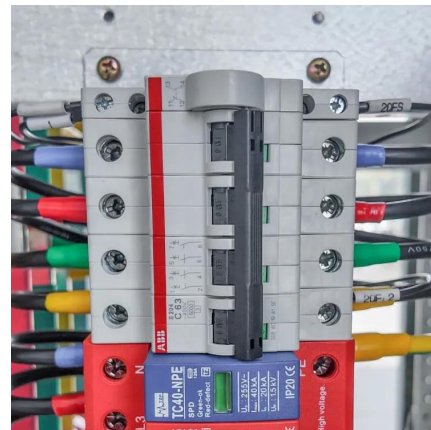
receive RF (radio frequency) signals, or radio waves, to and from mobile phones near the base station. Without these radio waves, mobile communications would not be possible. Radio waves have been used for communication. See more on Ericsson ScienceDirect

Base Transceiver Station - an overview , ScienceDirect Topics

Introduction to Base Transceiver Station (BTS) in Computer Science Context A base transceiver station (BTS) is a critical network component that serves as the primary hardware interface ...

Base Stations

Jul 23, 2025 · The present-day tele-space is incomplete without the base stations as these constitute an important part of the modern-day scheme ...



[Mobile base station , Application](#)

Explore STMicroelectronics' mobile base station solutions, enhancing connectivity and performance for telecom networks.

Contact Us

For technical specifications, project proposals, or partnership inquiries, please visit: <https://eiei.pl>



Scan QR Code for More Information



<https://eiei.pl>