

Solar panel sloping roof heightening solution





Overview

What is the optimal angle for flat roof solar panels?

Achieving the optimal angle for flat roof solar panels is essential for maximising sunlight capture and efficiency. Generally, the optimal angle will range from 20° to 50°, with 30° often being ideal. It is worth noting, however, that the optimal angle depends on various factors like geographic location, roof orientation, and seasonality.

Why should you install solar panels on a flat roof?

Optimal sunlight exposure: Solar mounting systems for flat roofs offer greater flexibility in panel tilt and direction. This allows installers to achieve the best angles for solar capture, potentially elevating efficiency over some pitched roof systems.

How do you install solar panels on a flat roof?

Ensure compliance with RC62 fire safety recommendations. Detect wildlife activity, such as bird nesting. When installing a solar panel system on a flat roof, two mounting methods are primarily used: ballasting and penetrative fixing.

Does shading affect solar energy production?

Even partial shading can significantly reduce solar PV energy production. Flat roof systems are particularly susceptible to shading from surrounding structures such as parapet walls, guardrails, or rooftop equipment. Panels can even cause self-shading if spaced too closely—especially when installed at steeper tilt angles.



Solar panel sloping roof heightening solution

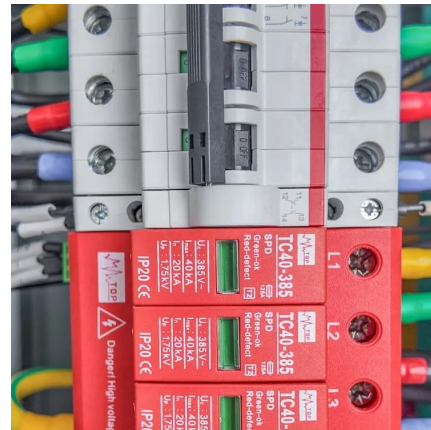


Flat Roof Solar Panel Installation Guide , Pros, Cons & Best ...

Discover the pros, cons, and best practices of installing solar panels on flat roofs. Learn optimal angles, spacing guidelines, mounting solutions, and key considerations for efficiency, ...

Complete Guide: How to Install a Solar Panel on a Sloped Roof

Jan 6, 2025 · Looking to install solar panels on a sloped roof? Discover this step-by-step guide on how to install solar panels, key considerations, and tips for a successful installation.



Maximizing Solar Potential: Innovative ...

Jul 31, 2025 · Discover innovative solar solutions tailored for low slope roofs, maximizing energy harvest while overcoming unique challenges. Unlock ...

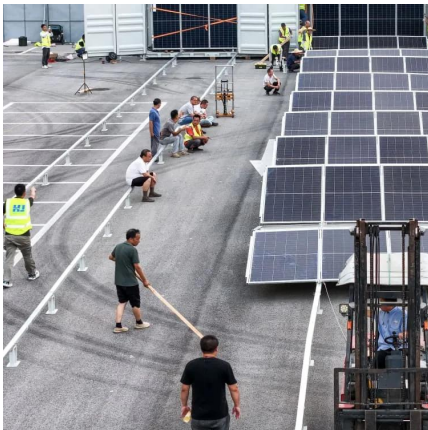
[How to install solar energy on a sloping house. , NenPower](#)

Oct 22, 2024 · When dealing with a sloping house, successfully implementing solar energy hinges on several crucial points: 1. Evaluate the roof angle and orientation, 2. Choose the appropriate ...



[How to install solar energy on a sloping roof ...](#)

Sep 6, 2024 · To install solar energy systems on a sloping roof building, one must consider several key factors to achieve optimal efficiency and ...



Is It Safe to Install Photovoltaic Panels on a Sloping Roof? A

NABCEP-certified technicians Remember: A \$2,000 savings on installation could lead to \$15,000 in roof repairs later. As one industry veteran quipped, "Solar panels are like tattoos - cheap ...



[How to install solar energy on a sloping roof building](#)

Sep 6, 2024 · To install solar energy systems on a sloping roof building, one must consider several key factors to achieve optimal efficiency and performance. 1. Understand the roof ...





[How to Install Solar Panels on a Sloped Roof: ...](#)

Learn how to effectively install solar panels on a sloped roof with our detailed guide. Discover the benefits, step-by-step installation process, safety tips, ...



[Which is the most common type of PV array mounting](#)

Nov 28, 2024 · Solar power has become an increasingly popular choice for homeowners and businesses. For sloped roofs, choosing the right PV array mounting system is essential to ...

[How to install solar energy on a sloping ...](#)

Oct 22, 2024 · When dealing with a sloping house, successfully implementing solar energy hinges on several crucial points: 1. Evaluate the roof angle ...



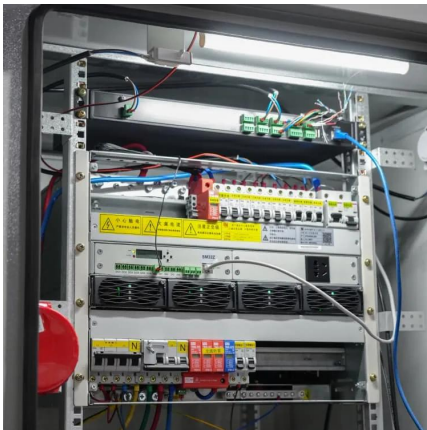
[Understanding Roof Pitch and Its Impact on Solar Panel ...](#)

Aug 4, 2025 · The angle of a roof can significantly impact the efficiency and performance of solar panels, especially when mounting solar panels to metal roof. Understanding how pitch ...



[Maximizing Solar Potential: Innovative Solutions for Low ...](#)

Jul 31, 2025 · Discover innovative solar solutions tailored for low slope roofs, maximizing energy harvest while overcoming unique challenges. Unlock efficiency and economic advantages in ...



How to Install Solar Panels on a Sloped Roof: Step-by-Step ...

Learn how to effectively install solar panels on a sloped roof with our detailed guide. Discover the benefits, step-by-step installation process, safety tips, and maintenance advice to maximize ...

[How to Choose a Photovoltaic Structure for a ...](#)

3. Roof Tilt Angle The optimal tilt angle for PV panels in Poland is approximately 30°-35°, as this arrangement maximizes solar radiation ...



[How to Choose a Photovoltaic Structure for a Sloped Roof?](#)

3. Roof Tilt Angle The optimal tilt angle for PV panels in Poland is approximately 30°-35°, as this arrangement maximizes solar radiation throughout the year. If the roof has a different tilt angle, ...



Contact Us

For technical specifications, project proposals, or partnership inquiries, please visit:
<https://eiei.pl>

Scan QR Code for More Information



<https://eiei.pl>