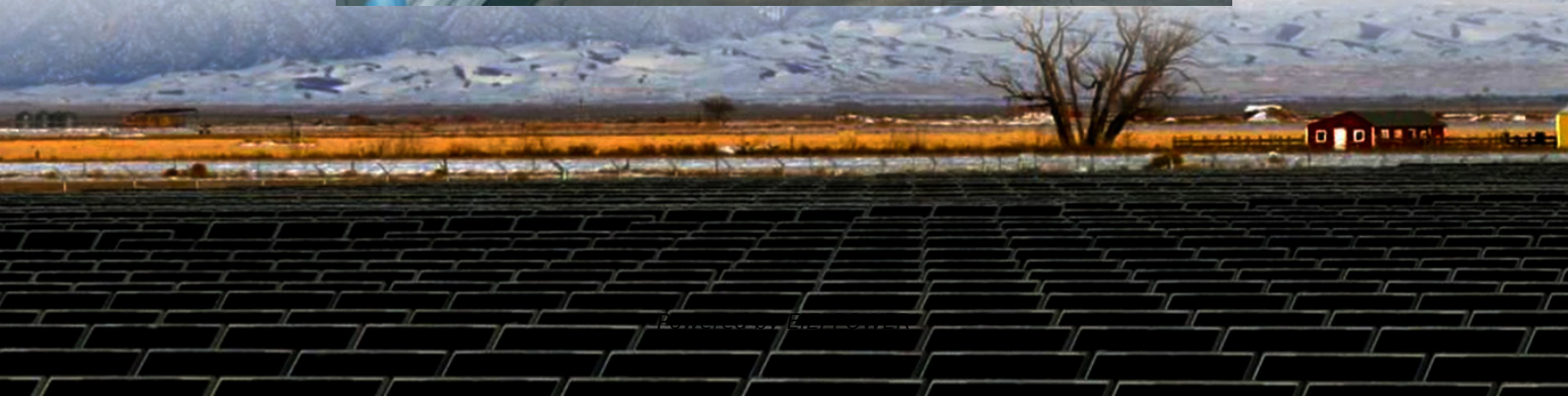


# **Solar container communication station lead-acid battery module parameter setting requirements**





## Overview

---

What are solar charge controller settings?

The settings on a solar charge controller, as detailed in (Key Details) - Solar Panel Installation, Mounting, Settings, and Repair, include the profile setting. This setting sets up the power output parameters to charge the battery bank in the most optimal voltage and current based on the battery chemistry used.

Do solar charge controllers work with lead-acid batteries?

Regarding lead-acid batteries, most solar charge controllers are pre-set with parameters suitable for this traditional and widely-used battery type. In many cases, it's simply a matter of plug-and-play, but always check the manufacturer's instructions for any specific recommendations or settings.

How do I set up my controller for lead-acid batteries?

Here's what you need to know about setting up your controller for lead-acid batteries: Default Settings: When you select the lead-acid battery type on your charge controller, it will automatically apply the standard settings suitable for most lead-acid batteries.

Do lithium batteries need a solar charge controller?

For those using lithium batteries with a solar charge controller, there are several essential points to consider during setup: Temperature Compensation: Lithium batteries do not require temperature compensation, unlike other battery types. Ensure that this feature is disabled or set to the correct parameter for lithium batteries.



## Solar container communication station lead-acid battery module pa

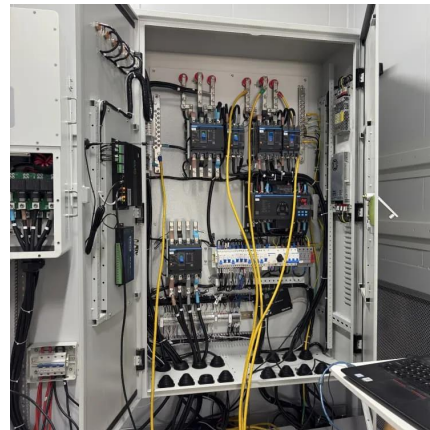


### Lead-Acid Battery

When you set parameters, ensure the following: Chg. curr. limiting coef. > Transfer-to-equalized charging curr. coef. Single batt. float chg. voltage deviation alarm thres. and Single batt. dis. ...

### [Y& H MPPT 30A Solar Charge Controller 12V ...](#)

This controller is suitable for all kinds of lead-acid batteries (including open, sealed, gel and other batteries). If you charge a lithium battery, you must ...



### [Solar Charge Controller Settings 101: All You Need to Know](#)

Apr 29, 2025 · To optimize the performance of your solar power system and safeguard the battery bank, it's crucial to configure the charge controller with the correct settings. While the specific ...

### Lead-acid battery parameter settings for RHI and RAI inverters

Mar 12, 2025 · Below are the explanation for each parameter, but most importantly, if the customer want to use the lead-acid battery, he must consult with the battery manufacturer to ...



### BATTERY ENERGY STORAGE SYSTEMS

Nov 9, 2022 · Unit one container for both battery and PCS), or grid- scale BESS (with dedicated containers for both batteries and PCS) oGrid frequencyin Hertz (Hz) oIngress protection (IP) ...



### What Are Charge Controller Settings? (Key ...

Feb 20, 2022 · The profile setting on a solar charge controller sets up the power output parameters to charge the battery bank in the most optimal ...



### Lead-acid battery parameter settings for RHI ...

Mar 12, 2025 · Below are the explanation for each parameter, but most importantly, if the customer want to use the lead-acid battery, he must ...



### [Battery Control Unit Reference Design for Energy ...](#)

Nov 6, 2023 · Description This reference design is a central controller for a high-voltage Lithium-ion (Li-ion), lithium iron phosphate (LiFePO4) battery rack. This design provides driving circuits ...

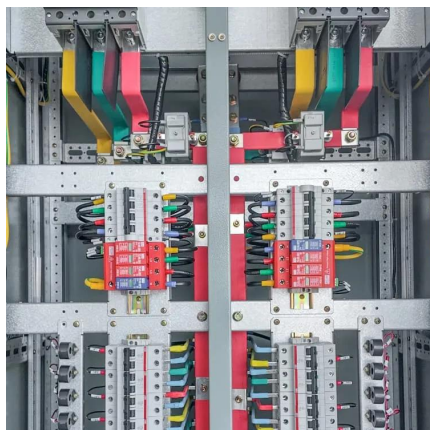


### [HANDBOOK FOR ENERGY STORAGE SYSTEMS](#)

The BMS protects the battery from harmful operation and maximises its lifespan by constantly monitoring the battery's parameters such as voltage, current, temperature, State-of-Charge 3 ...

### [MPPT Solar Charge Controller User Manual](#)

Jul 18, 2023 · Support full-power charging and discharging at one time. Support multiple battery types such as sealed battery, gel battery, flooded battery, lithium battery and user-defined ...



### [Solar Charge Controller Settings Guide](#)

For lead-acid batteries, which are a traditional choice for solar power systems, the transition from lithium or AGM to lead-acid is typically straightforward because charge controllers come pre ...



### [What Are Charge Controller Settings? \(Key Details\)](#)

Feb 20, 2022 · The profile setting on a solar charge controller sets up the power output parameters to charge the battery bank in the most optimal voltage and current based on the ...



### **Y& H MPPT 30A Solar Charge Controller 12V 24V Solar Panel Battery**

This controller is suitable for all kinds of lead-acid batteries (including open, sealed, gel and other batteries). If you charge a lithium battery, you must be familiar with its battery characteristics, ...

## **Contact Us**

---

For technical specifications, project proposals, or partnership inquiries, please visit: <https://eiei.pl>

**Scan QR Code for More Information**



<https://eiei.pl>