

Self-generating inverter voltage exceeds limit





Overview

What is the maximum overvoltage of a 500 kW inverter?

Similarly, Fig. 14(b) demonstrates the overvoltages when the load pf is 0.9 and the apparent power is 463 kVA. This yields an active power output of 416.6 kW, and a GLR of 1.2 if the inverter output is kept constant at 500 kW. The observed maximum overvoltage in these experiment was close to 29%.

What are the goals of grid-connected PV inverters?

Under grid voltage sags, over current protection and exploiting the maximum capacity of the inverter are the two main goals of grid-connected PV inverters. To facilitate low-voltage ride-through (LVRT), it is imperative to ensure that inverter currents are sinusoidal and remain within permissible limits throughout the inverter operation.

How is maximum exploitation of the inverter's capacity achieved?

It is clearly evident that maximum exploitation of the inverter's capacity is achieved due to simultaneous injection of active and reactive power without curtailing the active power as shown in Fig. 8 d.

What is over current protection mechanism in PV inverter?

As previously discussed, the simultaneous injection of peak active power from PVs and reactive power into the grid for voltage support can trigger the over current protection mechanism in PV inverter. The triggering of over current protection will lead to disconnection of inverter from the grid which is unfavourable during LVRT period.



Self-generating inverter voltage exceeds limit



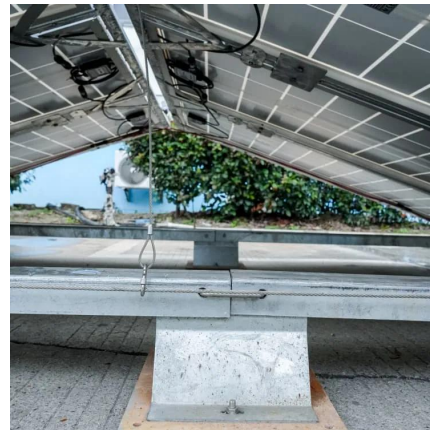
Inverter maximum input voltage mismatch with array Voc

May 9, 2024 · You need to know that the PV array voltage changes with temperature, and if the voltage exceeds the inverter's maximum input voltage on a cold day, it could damage the

...

How to avoid that solar inverters switch off at too high grid voltage

Jul 20, 2023 · Victron inverters synchronise with the grid, so output voltage will match input voltage, until you disconnect the grid input, or it exceeds the input limits and it defaults to the ...



Control strategy for current limitation and maximum capacity

May 2, 2024 · Under grid voltage sags, over current protection and exploiting the maximum capacity of the inverter are the two main goals of grid-connected PV inverters.

Analysis of transient overvoltages and Self Protection ...

Jan 15, 2025 · Maximum Power Point Tracking Real-Time Simulator Generator Step-Up Transient Overvoltage Austrian Institute of Technology Smart Grid Controller inverter to cease to ...



[Analysis of transient overvoltages and Self Protection ...](#)

Jan 1, 2023 · These mechanisms, referred to as Self Protection Over-Voltage (SPOV) mechanisms, have the added benefit of causing the inverter to cease to energize when the ...



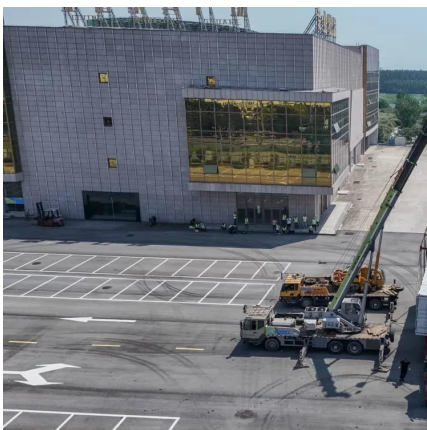
[SPOV Mechanism with Inverter-Based Distributed Energy ...](#)

Apr 22, 2022 · Abstract - Ground fault overvoltages can occur on 4 wire distribution feeders when distributed energy resources are unintentionally islanded with customer load and a phase to ...



Why Grid Voltage Exceeds Limits and How to Fix Inverter Issues

Summary: Solar system owners often face grid voltage limit warnings from inverters. This article explains why voltage spikes occur, their impact on renewable energy systems, and proven ...





[Inverter maximum input voltage mismatch ...](#)

May 9, 2024 · You need to know that the PV array voltage changes with temperature, and if the voltage exceeds the inverter's maximum input ...



[\(PDF\) Analysis of transient overvoltages and Self Protection](#)

Jan 1, 2023 · Analysis of transient overvoltages and Self Protection Overvoltage of PV inverters through RT-CHIL

[\(PDF\) Analysis of transient overvoltages and ...](#)

Jan 1, 2023 · Analysis of transient overvoltages and Self Protection Overvoltage of PV inverters through RT-CHIL



[WHY DO INVERTERS LIMIT PV INPUT VOLTAGE?](#)

Sep 18, 2023 · The answer lies in all three rst, let's consider performance. When solar panels generate electricity, their output voltage can vary depending on factors like sunlight intensity ...



WHY DO INVERTERS LIMIT PV INPUT ...

Sep 18, 2023 · The answer lies in all three rst, let's consider performance. When solar panels generate electricity, their output voltage can vary ...



Exceeding Inverter Limits

Feb 2, 2020 · The general rule of thumb is that your inverter Max Input voltage must be greater than $V_{oc} \times 1.2$, otherwise the inverter will shut down (if you are very lucky) or fry (more likely).

Contact Us

For technical specifications, project proposals, or partnership inquiries, please visit: <https://eiei.pl>

Scan QR Code for More Information



<https://eiei.pl>