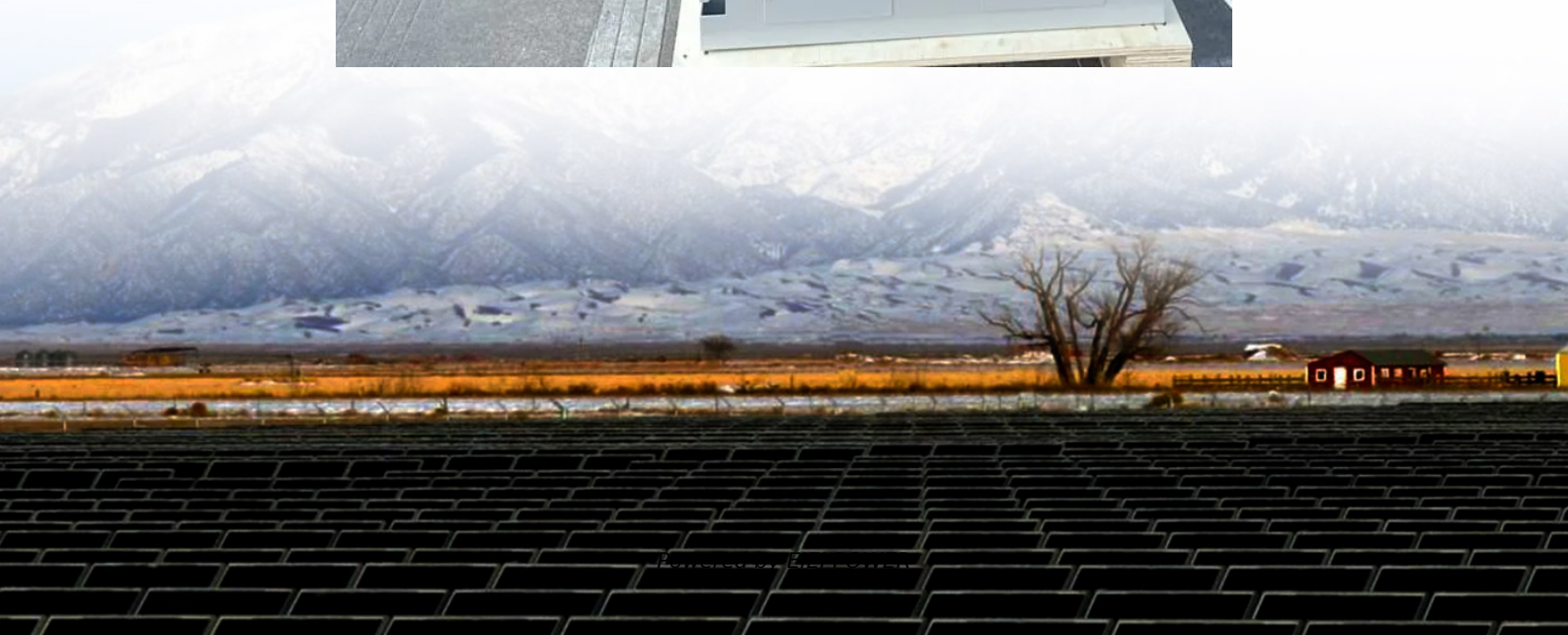


Rotary power generation and energy storage





Overview

Do we need a solar energy storage system?

Wind and solar power generation is becoming a significant power generation medium. However, both these power generation methods fluctuate widely, with wind power depending on wind speed and solar power dependent on the availability of sunshine. There is, therefore, a need to have an energy storage system embedded in the renewable energy system.

How do fly wheels store energy?

Fly wheels store energy in mechanical rotational energy to be then converted into the required power form when required. Energy storage is a vital component of any power system, as the stored energy can be used to offset inconsistencies in the power delivery system.

What size rotor is used in a flywheel energy storage system?

The shown unit features a rotor with a full-size 400 mm outer diameter but axial height scaled to 24% of the full-scale design with 1.0 kWh nominal capacity. Figure 1. Cutaway schematic of a flywheel energy storage system for experimental research. Inset shows the actual device [16].

Can RPFC and energy storage combined system improve energy consumption?

The results verify the applicability of the proposed optimal configuration scheme of the RPFC and energy storage combined system, which can effectively promote the new energy consumption and improve the flexibility and economy of the system. © 2025 Institute of Electrical Engineers of Japan and Wiley Periodicals LLC.



Rotary power generation and energy storage



[Flywheel Energy Storage Systems and their Applications: ...](#)

Oct 19, 2024 · Flywheel energy storage systems are suitable and economical when frequent charge and discharge cycles are required. Furthermore, flywheel batteries have high power ...

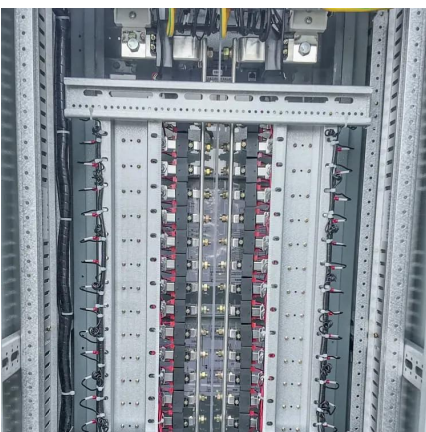
Bi-level planning of rotary power flow controllers and energy storage

Semantic Scholar extracted view of "Bi-level planning of rotary power flow controllers and energy storage systems for economy and carrying capacity improvement in the distribution network" ...



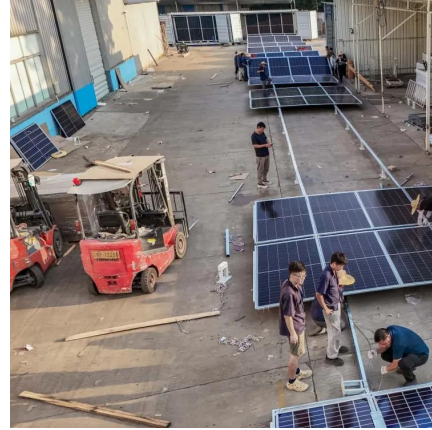
[Rotary energy storage mechanical mechanism](#)

Hence, mechanical energy storage systems can be deployed as a solution to this problem by ensuring that electrical energy is stored during times of high generation and supplied in time of ...



[Rotary power generation and energy storage](#)

How efficient is a rotary triboelectric generator? Most-effective and clean electrical energy. Here, the authors report a planar-structured rotary triboelectric generator with 24% efficiency for ...



[Energy Storage Flywheel Rotors--Mechanical ...](#)

Energy storage flywheel systems are mechanical devices that typically utilize an electrical machine (motor/generator unit) to convert electrical energy in ...



Bi-level planning of rotary power flow controllers and energy storage

Oct 1, 2025 · In a traditional distribution network, the weak grid structure and high penetration of renewable energy sources restrict the carrying capacity. Flexible interconnection devices ...



[Bi-Level Optimal Configuration of Energy Storage System ...](#)

Sep 15, 2025 · Aiming at the problems of wind and light curtailment, reverse transmission, and over-limit of feeder power caused by the access of distributed generation (DG) in high ...





ENERGY HARVESTING FROM ROTATING STRUCTURES

Oct 1, 2025 · Abstract: In this paper, we analyze and demonstrate a novel rotational energy harvesting generator using gravitational torque. The electro-mechanical behavior of the ...



Bi-level planning of rotary power flow controllers and energy storage

Download Citation , On Oct 1, 2025, Junda Lu and others published Bi-level planning of rotary power flow controllers and energy storage systems for economy and carrying capacity ...

A Tubular Linear-Rotary Generator With Dual Stators for...

Jul 25, 2025 · Abstract: So as to the efficient and low-cost utilization of offshore renewable energy, a novel direct-drive wind-wave complementary energy generation (D-D WWCEG) platform ...



Energy Storage Flywheel Rotors--Mechanical Design

Energy storage flywheel systems are mechanical devices that typically utilize an electrical machine (motor/generator unit) to convert electrical energy in mechanical energy and vice ...



Contact Us

For technical specifications, project proposals, or partnership inquiries, please visit:
<https://eiei.pl>

Scan QR Code for More Information



<https://eiei.pl>