

# Reasons why the base station cannot communicate





## Overview

---

Why is a base station important in wireless communication?

A base station is fundamental in wireless communication, because it facilitates the connection between your device and the wider network. Without base stations, mobile data and voice services would be impossible, as there would be no infrastructure to handle the transmission of signals.

What is a base station in a wireless network?

A base station is a critical component of wireless communication networks. It serves as the central point of a network that connects various devices, such as smartphones, tablets, and computers. The base station transmits and receives signals, ensuring seamless communication over radio frequencies.

What does a base station do?

It serves as the central point of a network that connects various devices, such as smartphones, tablets, and computers. The base station transmits and receives signals, ensuring seamless communication over radio frequencies. In essence, it acts as the intermediary between the user and the network, enabling wireless connectivity.

Why is my base station not being detected?

There are two sides to the connection problem; If your Base station is connected to your network but experiencing detection issues on the app, scroll down to the “base station not being detected” section. Here are common reasons you could experience problems connecting the base station and onboarding it to the app;



## Reasons why the base station cannot communicate

---



### EMF

A base station is made up of antennas connected by cable to electronic (radio) equipment usually housed in a room or 'shelter'. Some base stations have radio communications dishes (shaped ...

### [Base Station's Role in Wireless Communication Networks](#)

What is a base station? A base station is a critical component of wireless communication networks. It serves as the central point of a network that connects various devices, such as ...



### EMF

A base station is made up of antennas connected by cable to electronic (radio) equipment usually housed in a room or 'shelter'. Some base ...



### [Base Stations and Cell Towers: The Pillars of Mobile ...](#)

May 16, 2024 · Base stations and cell towers are critical components of cellular communication systems, serving as the infrastructure that



supports seamless mobile connectivity. These ...

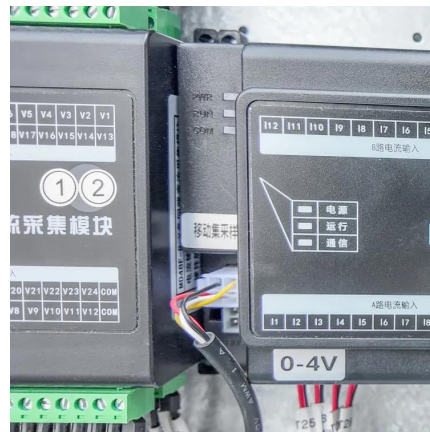


### Base Stations

Jul 23, 2025 · What is Base Station? A base station represents an access point for a wireless device to communicate within its coverage area. It usually connects the device to other ...

### What Does a Base Station Do and Why Is It Essential for ...

Sep 5, 2025 · A base station is a fixed point of communication between mobile devices and the wider telecom network. It transmits and receives radio signals, enabling your phone to access ...



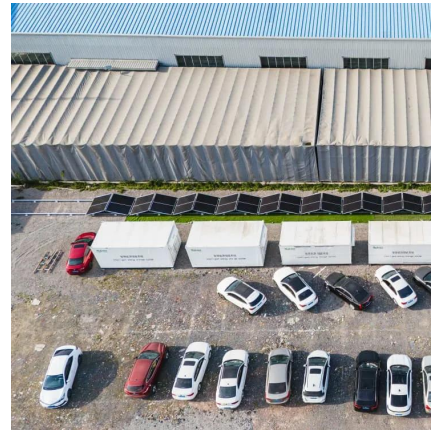
### Risk Communication Guide for Mobile Phones and Base ...

Sep 26, 2023 · 2. Risk and Risk Perception Factors: Why are People Concerned? Communication about the location of base station antennas or use of mobile phones is sometimes ...



## Base Stations

Jul 23, 2025 · What is Base Station? A base station represents an access point for a wireless device to communicate within its coverage area. It ...



### [Huawei Base Station Knowledge Base & FAQ-Huawei](#)

Listings 0-20 (out of 9) Here are the troubleshooting cases and FAQs for Huawei Base Station products. Get your solutions if you have met some problems.

### [Arlo Base Station Not Connecting](#)

Jul 29, 2023 · Arlo Base stations and Smart Hubs LEDs communicate the connection status, helping you pinpoint the source of the issue. I like the 3-LED base station with (Power, ...



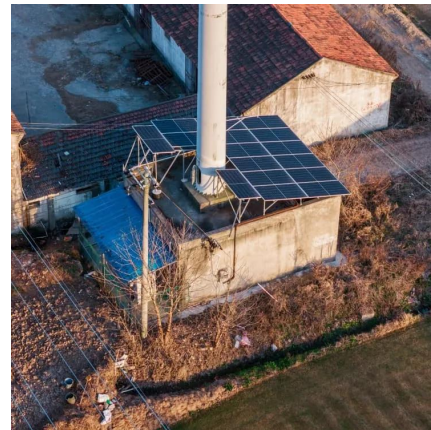
### [Understanding Base Stations: The Backbone of Wireless ...](#)

Jan 6, 2025 · With the advent of 5G technology, base stations are evolving to meet the demands of faster data speeds, lower latency, and massive device connectivity. 5G base stations are ...



### **What Is the Role of a Base Station in Wireless Communication?**

Jun 27, 2025 · Base stations are the backbone of wireless communication networks, playing a pivotal role in signal transmission, network reliability, and high-speed data connectivity. As ...



## **Contact Us**

---

For technical specifications, project proposals, or partnership inquiries, please visit:  
<https://eiei.pl>

**Scan QR Code for More Information**



<https://eiei.pl>