

# Power station next to wind turbine





## Overview

---

How do wind power stations work?

A wind power station, often known as a wind farm, captures wind's kinetic energy and turns it into electricity. Here's an explanation of how do wind power stations work internally: 1. Wind Turbines: Wind turbines are the principal component of a wind power facility. They consist of enormous blades attached to a hub installed on top of a tall tower.

Are mobile wind power stations the answer to energy on the go?

Whether you're powering up a festival, supporting emergency relief, or reducing diesel use on an off-grid property, mobile wind power stations are the answer to energy on the go. Huijue Group is committed to making clean energy more accessible, reliable, and adaptable, paving the way for a greener future—wherever you are.

What is a mobile wind power plant?

Enter mobile wind power plants, a ground-breaking solution for remote and temporary sites where traditional wind turbines simply can't reach. With a portable wind turbine power station like the Huijue Mobile Wind Power Station, energy is no longer bound by geography.

What is wind power?

Wind power is a form of energy conversion in which turbines convert the kinetic energy of wind into mechanical or electrical energy that can be used for power. Wind power is considered a form of renewable energy. Modern commercial wind turbines produce electricity by using rotational energy to drive a generator.



## Power station next to wind turbine

---



### Wind Power Station

Wind power stations are facilities that generate electricity by harnessing wind energy through the use of wind turbines, as evidenced by the increasing capacity of such stations in various ...



### EMSD HK RE NET

Jan 4, 2021 · The design, construction, and commissioning of the wind turbine is described in detail in the HKE website. There is also an Exhibition Centre next to the wind turbine ...

### [What are wind energy storage power ...](#)

Jun 13, 2024 · What are wind energy storage power stations? Wind energy storage power stations utilize advanced systems to harness and retain ...



### [Mobile Wind Power Plants: A Free Journey of ...](#)

Nov 8, 2024 · Discover how mobile wind power plants like Huijue's portable wind turbine bring reliable, low-cost energy to remote and temporary ...



## [Portable Wind Turbines , Uprise Energy's](#)

...

Discover the portability of Uprise Energy's Mobile Power Stations. Our 12kW portable wind turbines are easy to transport and set up, providing reliable ...



## **Can You Charge a Portable Power Station with a Wind Turbine?**

Jul 30, 2025 · Wind turbines offer a compelling alternative, especially in windy regions, yet misconceptions persist about their compatibility with portable power stations. Many assume ...



## [What Is A Wind Farm Substation](#)

Oct 11, 2025 · What Is A Step-Up Substation? In most wind farms, a step-up substation is established to gather energy generated by turbines through medium voltage (MV) cables. ...





## [Mobile Wind Power Plants: A Free Journey of New Energy](#)

Nov 8, 2024 · Discover how mobile wind power plants like Huijue's portable wind turbine bring reliable, low-cost energy to remote and temporary sites. Learn about the advantages of wind ...

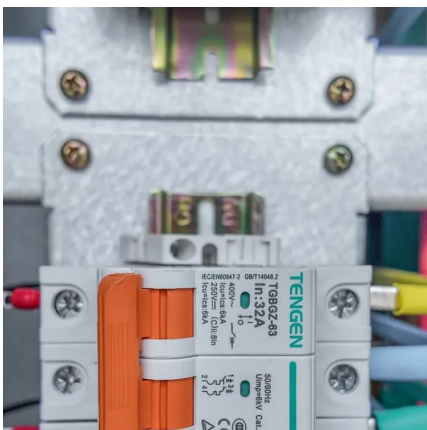
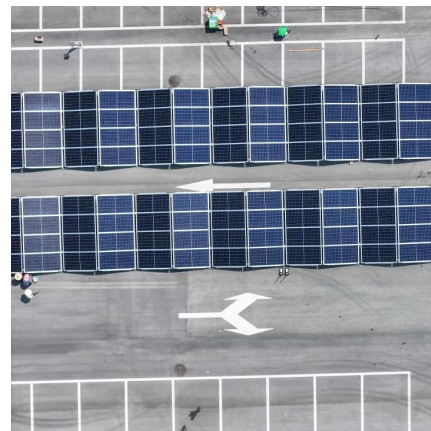


## [How Do Wind Power Stations Work? A ...](#)

May 15, 2024 · A wind power station, often known as a wind farm, is a facility that converts wind energy into electricity. These stations are usually made ...

## **EMSD HK RE NET**

Jan 4, 2021 · The design, construction, and commissioning of the wind turbine is described in detail in the HKE website. There is also an ...



## [What are wind energy storage power stations? , NenPower](#)

Jun 13, 2024 · What are wind energy storage power stations? Wind energy storage power stations utilize advanced systems to harness and retain energy generated by wind turbines for ...



## [How Do Wind Power Stations Work? A Detailed Look Inside](#)

May 15, 2024 · A wind power station, often known as a wind farm, is a facility that converts wind energy into electricity. These stations are usually made up of many wind turbines strategically ...

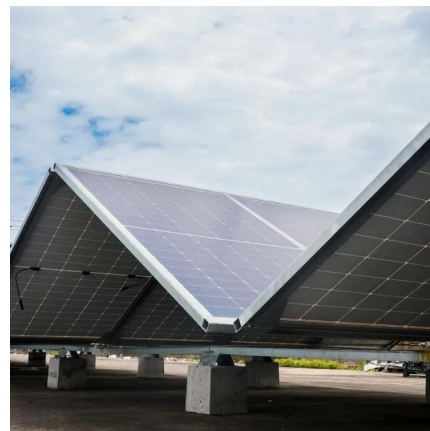


## [Wind power , Description, Renewable Energy, Uses, ...](#)

Nov 21, 2025 · Wind power is a form of energy conversion in which turbines convert the kinetic energy of wind into mechanical or electrical energy that can be used for power. Wind power is ...

## [Do Portable Power Stations Work With Wind Turbines?](#)

That's where portable power stations come in. But, can these compact devices work in harmony with wind turbines to harness the power of nature? This question might spark your interest, ...



## **Portable Wind Turbines , Uprise Energy's Mobile Power Stations ...**

Discover the portability of Uprise Energy's Mobile Power Stations. Our 12kW portable wind turbines are easy to transport and set up, providing reliable off-grid power for remote areas, ...



## [What Is A Wind Farm Substation](#)

Oct 11, 2025 · What Is A Step-Up Substation? In most wind farms, a step-up substation is established to gather energy generated by turbines through ...



## Contact Us

---

For technical specifications, project proposals, or partnership inquiries, please visit:  
<https://eiei.pl>

## Scan QR Code for More Information



<https://eiei.pl>