

Maximum current output by the battery in the energy storage cabinet





Overview

What type of batteries are used in energy storage cabinets?

Lithium batteries have become the most commonly used battery type in modern energy storage cabinets due to their high energy density, long life, low self-discharge rate and fast charge and discharge speed.

What are the technical measures of a battery energy storage system?

The main technical measures of a Battery Energy Storage System (BESS) include energy capacity, power rating, round-trip efficiency, and many more. [Read more.](#)

What is energy storage cabinet?

Energy Storage Cabinet is a vital part of modern energy management system, especially when storing and dispatching energy between renewable energy (such as solar energy and wind energy) and power grid.

What is the capacity of a battery?

This is the energy that a battery can release after it has been stored. Capacity is typically measured in watt-hours (Wh), unit prefixes like kilo (1 kWh = 1000 Wh) or mega (1 MWh = 1,000,000 Wh) are added according to the scale. The capability of a battery is the rate at which it can release stored energy.



Maximum current output by the battery in the energy storage cabinet



What is the maximum power output of a home energy storage ...

They can discharge energy quickly, which means they can power multiple high - wattage appliances at once. On the other hand, lead - acid batteries, which are an older technology, ...

SmartGen HBMS100 Energy storage Battery ...

SmartGen HBMS100 Energy storage Battery cabinet. Energy Storage Cabinet. Technical Parameters: Voltage Range (582.4~759.2)VDC Rated ...



Maximum operating current of the energy storage cabinet battery

What is the maximum continuous power output?The maximum continuous power output is a crucial specification that highlights the sustained power capacity of a battery storage system ...

Technical Specifications of Battery Energy Storage Systems ...

Definition Key figures for battery storage systems provide important information about the technical properties of Battery Energy Storage Systems (BESS). They allow for the ...



[SmartGen HBMS100 Energy storage Battery cabinet](#)

SmartGen HBMS100 Energy storage Battery cabinet. Energy Storage Cabinet. Technical Parameters: Voltage Range (582.4~759.2)VDC Rated Voltage 665.6VDC Cell Specification ...



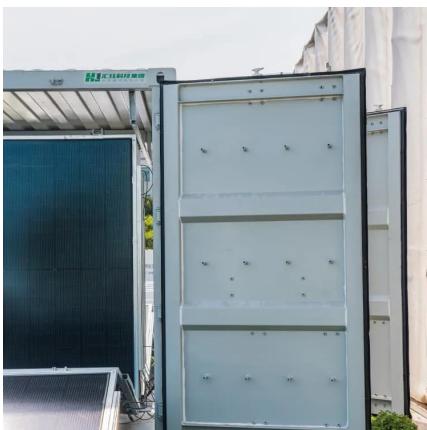
[Battery cabinet and current output control](#)

Lithium batteries have become the most commonly used battery type in modern energy storage cabinets due to their high energy density, long life, low self-discharge rate and fast charge and ...



[How to design an energy storage cabinet: integration and ...](#)

Jan 3, 2025 · As the core equipment in the energy storage system, the energy storage cabinet plays a key role in storing, dispatching and releasing electrical energy. How to design an ...





Energy Storage Cabinets: Durable, Efficient & Scalable

Flexibility is a significant advantage in modern energy management, which is where modular energy storage and portable energy storage solutions shine. Modular systems allow you to ...



Maximum output power of energy storage cabinet

What does peak output mean in a battery storage system? This specification serves as a valuable indicator of the system's reliability and suitability for applications where uninterrupted power is ...

How to control the output current of the energy storage ...

CatI C& I Cabinet Energy Storage System product introduction of cell, module, high voltage box, outdoor battery cabinet, Outdoor Combiner cabinet. HVB (BMS Control Box) includes BCU, ...



Technical Specifications of Battery Energy Storage Systems ...

Round-Trip Efficiency Service Life Self-Discharge Rate Temperature Range Voltage Range Energy Density Power Density This figure refers to the voltage a battery can be charged and discharged with safely. The voltage range of an accumulator largely depends on the storage technology and the power electronics. See more on flex-power.energyhxjglobal



What is the maximum power output of a home energy storage ...

They can discharge energy quickly, which means they can power multiple high - wattage appliances at once. On the other hand, lead - acid batteries, which are an older technology, ...

[250kW/500kWh Outdoor Cabinet Energy Storage ...](#)

Mar 31, 2025 · Intelligent Dispatch Real-time acquisition of local load power, photovoltaic power generation priority is self-generation and self-use, and surplus electricity storage. When the ...



Contact Us

For technical specifications, project proposals, or partnership inquiries, please visit:
<https://eiei.pl>

Scan QR Code for More Information



<https://eiei.pl>