

Low voltage inverter 220v to 36v





Overview

What is a 220V power inverter?

A 220 volt power inverter converts direct current to conventional alternating current. It can be used to run electronic equipment when there is no normal power supply. Sam Stores stocks a wide range of power inverters to match your needs.

What is a 36 volt inverter?

Looking for a 36 V inverter is often harder than finding a 12 V or 24V inverter since they are less common. Although not used as often, they still serve important roles in mid-range power applications. All of these higher-voltage systems should be used when powering equipment that draws over 3,000 W. Higher voltage is important for several reasons.

What voltage should a solar inverter match?

Your inverter should match the DC voltage of your battery or solar system—e.g., 36 V input for a 36 V battery bank. Mismatches can cause poor performance or damage. Try to operate your inverter at around 70–80% of its continuous rating to maximize efficiency and lifespan.

What is a low cut-off voltage for an inverter?

The low cut-off of the inverter can be set at the load voltage of 170 volts for the tube light, fan, etc. So the tube light and fan will not be switched off until the voltage goes below 170 volts. If there is no load connected to the output of the inverter, the output voltage is 270 to 290 volts.



Low voltage inverter 220v to 36v



[Hybrid Powerful 36v 220v Inverter for Varied Uses](#)

The 36v 220v inverter is a pivotal device in the realm of power conversion, designed to transform 36V DC (Direct Current) into 220V AC (Alternating Current). This category of inverters is ...

[220V to 36V converter, 240W](#)

Aug 30, 2025 · The LY240-ADD36-N is a 36V converter of 240W with a very wide input range and temperature range. The converter can convert 220V to 36V DC and supply 6,6A.



[Inverters 36V To 220V](#)

Jun 25, 2024 · Looking for inverters 36v to 220v? If you want to choose from a wide range of great and affordable products, visiting AliExpress is your first choice. AliExpress has a huge ...



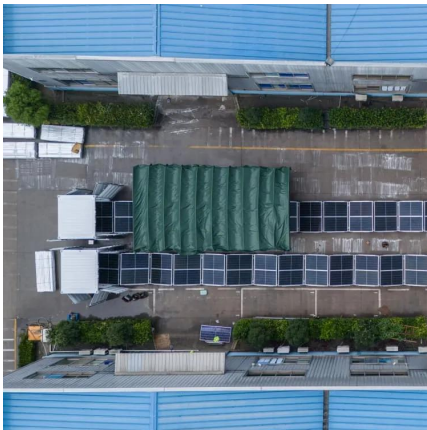
[220V AC to 36V DC Transformer](#)

Wholesale & buy in bulk 220v ac to 36v dc transformer at low price. Premium copper winding with high efficiency; ideal for industrial controls and electrical equipment. Find out more options and ...



[Amazon : PDOLIGBDN 3KW 3000W DC 36V to AC 220V ...](#)

Power Inverters Inverter Input part DC voltage: 12V or 24V or 48V or 110V Voltage range: 10-15VDC or 21-30VDC or 42-60VDC or 100-120VDC <;1.86 Efficiency: >85% DC connection: ...



Hybrid Inverter 3000W 36V 220V Pure Sine Wave Power Inverter ...

Sep 24, 2024 · Hybrid Inverter 3000W 36V 220V Pure Sine Wave Power Inverter with 30A PWM Solar Controller, Find Details and Price about Power Inverter Solar Charger 12/24V from ...



[Wholesale 220V 36V Transformer 2k+ , Alibaba](#)

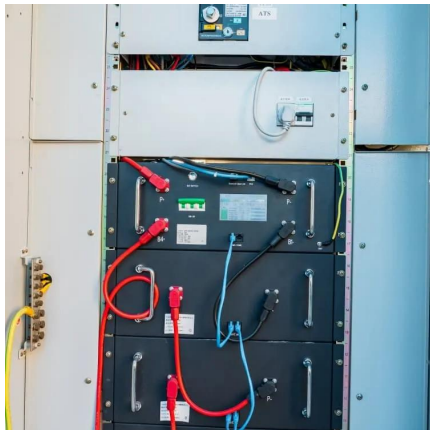
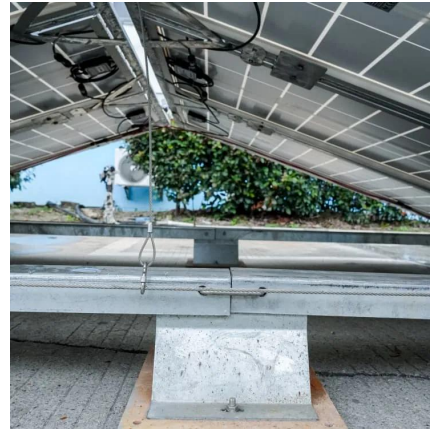
A 220V to 36V transformer is an essential electrical device used to step down high mains voltage (220V) to a safer, lower voltage (36V), commonly used in low-voltage lighting, control circuits, ...





220V AC to 36V DC Transformer

Wholesale & buy in bulk 220v ac to 36v dc transformer at low price. Premium copper winding with high efficiency; ideal for industrial controls and ...

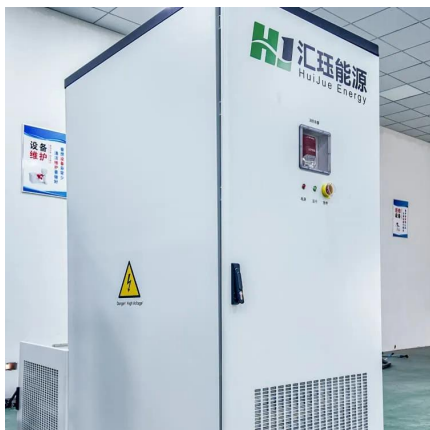


Hybrid Inverter 3000W 36V 220V Pure Sine ...

Sep 24, 2024 · Hybrid Inverter 3000W 36V 220V Pure Sine Wave Power Inverter with 30A PWM Solar Controller, Find Details and Price about ...

The Best 36 Volt Power Inverters , SolarKnowHow

The 3000W Pure Sine Wave Inverter (3000W36V) converts 36V DC power to efficient 110V/120V AC electricity. It is a good choice for cars, solar, and off-grid setups.



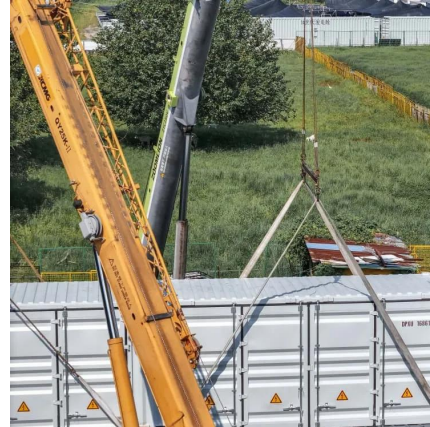
Best 36v Inverter [Updated: December 2025]

Aug 3, 2025 · The advantages of choosing a 36V inverter over other voltage types include improved efficiency, compatibility with various battery systems, enhanced safety, better ...



The Best 36 Volt Power Inverters

The 3000W Pure Sine Wave Inverter (3000W36V) converts 36V DC power to efficient 110V/120V AC electricity. It is a good choice for cars, solar, and ...



Inverter 36V 220V

A 36V to 220V inverter is used to convert the battery's 36V DC power to 220V AC power, which can be used to power a household. It is a device that converts the electricity from a battery into ...

Contact Us

For technical specifications, project proposals, or partnership inquiries, please visit:
<https://eiei.pl>

Scan QR Code for More Information



<https://eiei.pl>