

Lithium tool battery automatically cuts off power





Overview

Do lithium ion power tool batteries wear down?

Lithium Ion power tool batteries do wear down due to two factors: 1) active usage and 2) natural aging of the battery. Both will wear down your power tool battery over time. The trick is to minimize their impact while still getting the performance out of your rechargeable battery that you need, when you need it.

Do power tool batteries lose charge?

Power tool batteries do lose charge over time, especially in hot temperatures. The hotter the temperature, the faster the batteries lose their charge. So, rule number one for power tool battery maintenance is: keep your battery cool.

How do you charge a power tool with a lithium ion battery?

To charge a power tool with a lithium-ion battery, connect the battery to the charger. Before doing so, ensure the battery is properly secured in the battery case. One important point to remember: never completely discharge the battery.

Why is my lithium-ion battery not working?

A lithium-ion battery may appear completely dead due to overuse or leaving it on the charger for too long. For example, using an impact wrench for an extended period can drain the battery voltage so low that the charger fails to recognize the battery for charging. Here are a few methods of reviving lithium-ion batteries that are not working.



Lithium tool battery automatically cuts off power

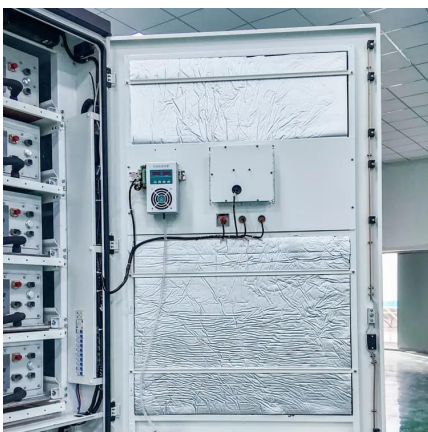


Can the lithium electric angle grinder automatically cut off the power

Jun 4, 2024 · When the workload is too high and the current is too high, the lithium battery will automatically stop supplying power through the protection circuit to protect the battery and ...

Tool Box Talk No 90

Mar 28, 2025 · Charging a device or battery without following manufacturer's instructions may cause damage to rechargeable lithium-ion batteries. For example, some manufacturer ...



[Why Cordless Tools Lose Charge Quickly: Battery Mystery](#)

May 15, 2025 · The Science Behind Battery Drain
Cordless tools rely on rechargeable batteries, typically lithium-ion, to deliver power. However, these batteries lose charge due to chemical ...

[How to revive a Lithium-ion dead battery from power tools?](#)

Sep 6, 2019 · When a lithium-ion battery is over-drained, its protection circuit turns it off, making it dysfunctional to be used, or recharged by the



charger. This may happen due to overuse or ...

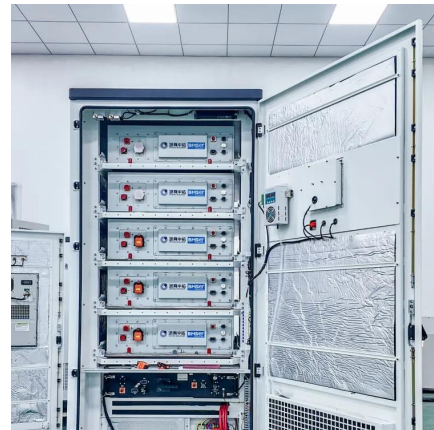


[Five common battery issues and possible ...](#)

Aug 22, 2024 · Lithium-ion (Li-ion) batteries are now the standard power source for electric tools. They are compact, powerful, and long-lasting. ...

[Five common battery issues and possible solutions](#)

Aug 22, 2024 · Lithium-ion (Li-ion) batteries are now the standard power source for electric tools. They are compact, powerful, and long-lasting. With proper care, they can last up to 1,000 ...



[Why Is Your Power Tool Losing Power? Common Causes and ...](#)

Feb 13, 2025 · Lithium-ion batteries are the gold standard for power tools - lightweight, long-lasting, and capable of delivering consistent power. However, like all batteries, they're prone to ...



[How to revive a Lithium-ion dead battery ...](#)

Sep 6, 2019 · When a lithium-ion battery is overdrained, its protection circuit turns it off, making it dysfunctional to be used, or recharged by the ...

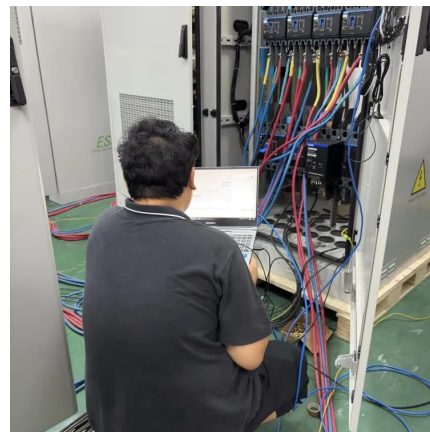


[Understanding Battery Protection System in Makita Tools](#)

Dec 4, 2024 · The Battery Protection System is a feature integrated into Makita's lithium-ion batteries that automatically cuts off power to the tool. This helps prevent damage to the battery ...

[Why Cordless Tools Lose Charge Quickly: ...](#)

May 15, 2025 · The Science Behind Battery Drain
Cordless tools rely on rechargeable batteries, typically lithium-ion, to deliver power. However, ...



[10 Mistakes That Are Ruining Your Power Tool Batteries](#)

Dec 11, 2024 · Power tools make virtually every DIY project easier, but there are all sorts of mistakes you can make that will put their battery's longevity at risk.



[Keep Your Power Tools Roaring: The Ultimate ...](#)

May 27, 2025 · When to Buy a New Power Tool Battery It's time to visit Triple Battery and shop for power tool batteries when: Your battery no longer ...



[Keep Your Power Tools Roaring: The Ultimate Guide to Battery](#)

May 27, 2025 · When to Buy a New Power Tool Battery It's time to visit Triple Battery and shop for power tool batteries when: Your battery no longer holds a significant charge. Runtime has ...



[Why is My Ryobi Battery Cutting Out? Common Causes & Fixes](#)

Mar 22, 2025 · Overheating: Batteries, especially lithium-ion batteries like those used in Ryobi tools, are sensitive to temperature. If the battery gets too hot, it can trigger a safety ...





Contact Us

For technical specifications, project proposals, or partnership inquiries, please visit:
<https://eiei.pl>

Scan QR Code for More Information



<https://eiei.pl>