

Lithium batteries require a dedicated inverter





Overview

Does a lithium battery work with a solar inverter?

While lithium batteries can't work with every inverter, most modern solar and off-grid inverters now offer lithium compatibility. For optimal performance in home energy stems, choose an inverter specifically designed for lithium battery or LiFePO4 battery systems, and always verify compatibility before purchasing.

Should you use a lithium battery inverter?

Lithium batteries are more efficient than lead-acid, so you might opt for a slightly less powerful inverter to optimize efficiency. Low Battery Cutoff (LBC): These settings protect the battery from over-discharge and over-charging. Ensure the inverter's LBC is compatible with the recommended voltage limits of your lithium battery.

How to know if a lithium battery is compatible with an inverter?

As most of the inverters do not have any communication for the battery communication so these Inverters cant do any thing about the communication port of the Lithium battery. Here's how to find out for sure: Check the battery manual or manufacturer website: They'll recommend compatible inverter models and specifications.

What are the specifications of a lithium battery inverter?

Inverter Specifications: Charging Current: The inverter's charging current must match your lithium battery's recommended charging current. Exceeding this limit can damage the battery. **Operating Voltage:** The inverter's operating voltage range should be compatible with the nominal voltage of your lithium battery bank (e.g., 12V, 24V, 48V).



Lithium batteries require a dedicated inverter



[Can Lithium Batteries Work With Any Type of Inverter?](#)

Jul 21, 2025 · The Bottom Line While lithium batteries can't work with every inverter, most modern solar and off-grid inverters now offer lithium compatibility. For optimal performance in home ...

[Do Lithium Batteries Need a Special Inverter?](#)

Nov 28, 2023 · Lithium batteries, including lithium-ion batteries and lithium iron phosphate (LiFePO4) batteries, don't necessarily require a special inverter specifically designed for ...



[Lithium batteries require a dedicated inverter](#)

Battery vs Inverter: Choosing the Right Power Source In addition to the hardware costs, ongoing maintenance should also be considered. Batteries may require regular maintenance, such as ...

[Do I need a special inverter for Lithium](#)

...

May 20, 2024 · Do you need a special inverter for your lithium battery? Learn the crucial factors to consider when choosing the right inverter for optimal ...



[Can I Use an Inverter to Power My House?](#)

1 day ago · Another key factor is battery storage. An inverter alone cannot generate electricity; it must be used alongside batteries or a solar power system. For reliable off-grid or backup ...



[Calculate Battery Size For Any Size Inverter ...](#)

Mar 3, 2023 · So I have made it easy for you, use the calculator below to calculate the battery size for 200 watt, 300 watt, 500 watt, 1000 watt, ...



[Importance of Compatibility Between Inverter ...](#)

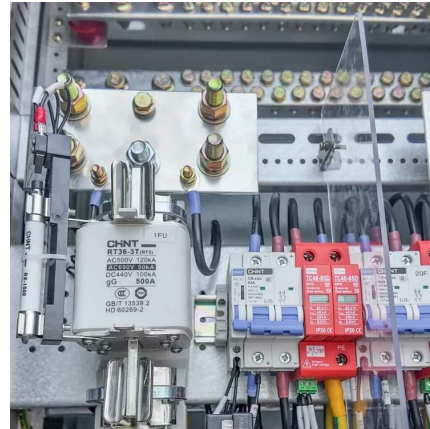
Oct 13, 2024 · Among these innovations, lithium batteries have emerged as the preferred choice for backup power due to their efficiency, longevity, ...





Importance of Compatibility Between Inverter and Lithium Battery

Oct 13, 2024 · Among these innovations, lithium batteries have emerged as the preferred choice for backup power due to their efficiency, longevity, and compact design. However, one key ...



[Do you need a special inverter for lithium batteries?](#)

Yes, lithium batteries require inverters specifically designed for their voltage profiles and BMS communication protocols. Standard inverters for lead-acid batteries lack voltage calibration for ...

[Compatibility Analysis Between Lithium](#)

...

May 21, 2025 · However, achieving full compatibility between lithium batteries and inverters requires consideration of multiple factors, including electrical ...



[Do You Need a Special Inverter for Lithium ...](#)

Apr 22, 2024 · Do Lithium Batteries Require Special Inverters? Lithium batteries necessitate specific technical considerations from the inverters ...



[Do Lithium Batteries Need a Special Inverter?](#)

Nov 28, 2023 · Lithium batteries, including lithium-ion batteries and lithium iron phosphate (LiFePO4) batteries, don't necessarily require a special ...



How to Select the Right Inverter for Your Lithium Battery Pack

Oct 27, 2025 · A definitive inverter selection guide for lithium battery systems. Learn the crucial differences between AC and DC coupling, key compatibility factors, and system design ...

Compatibility Analysis Between Lithium Batteries and Inverters ...

May 21, 2025 · However, achieving full compatibility between lithium batteries and inverters requires consideration of multiple factors, including electrical parameters, communication ...



[What size inverter do you need for a 100ah ...](#)

Oct 17, 2022 · A 12V battery will require a 12V inverter, and a 24V battery will require a 24V inverter. Output Waveform: This will indicate how smooth of ...



[Can Lithium Batteries Work With Any Type of ...](#)

Jul 21, 2025 · The Bottom Line While lithium batteries can't work with every inverter, most modern solar and off-grid inverters now offer lithium ...

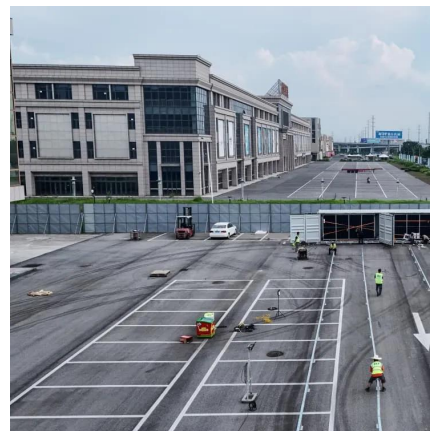


[Do You Need a Special Inverter for Lithium Batteries?](#)

Apr 22, 2024 · Do Lithium Batteries Require Special Inverters? Lithium batteries necessitate specific technical considerations from the inverters they are paired with, particularly ...

[Compatibility of Lithium-Ion Batteries with ...](#)

Learn how to seamlessly integrate lithium-ion batteries with existing inverters for efficient and reliable power solutions. Maximize energy storage with ...



[Battery Room Ventilation and Safety](#)

Mar 15, 2023 · The flooded cell batteries require dedicated ventilation system to maintain hydrogen concentration below the lower explosive limit. VRLA batteries have lesser risk and ...



[Do I need a special inverter for Lithium battery?](#)

May 20, 2024 · Do you need a special inverter for your lithium battery? Learn the crucial factors to consider when choosing the right inverter for optimal compatibility.



[What Is the Maximum Inverter for 100Ah](#)

...

May 16, 2023 · Learn how to choose the best power inverter for your 100Ah battery. Understand compatibility, installation, and usage tips for optimal ...

[How to Choose the Right Inverter for Lithium Batteries?](#)

Apr 11, 2025 · Answer: To choose the right inverter for lithium batteries, match the inverter's voltage and capacity to your battery's specifications, prioritize pure sine wave inverters for ...



[Do I need a special inverter for Lithium](#)

...

May 20, 2024 · Do you need a special inverter for your lithium battery? ...



[Do Lithium Batteries Need a Special Inverter?](#)

Lithium batteries, particularly LiFePO4 batteries, do require a specific type of inverter to ensure optimal performance and safety. While standard inverters can work with lithium batteries, ...



Contact Us

For technical specifications, project proposals, or partnership inquiries, please visit:
<https://eiei.pl>

Scan QR Code for More Information



<https://eiei.pl>