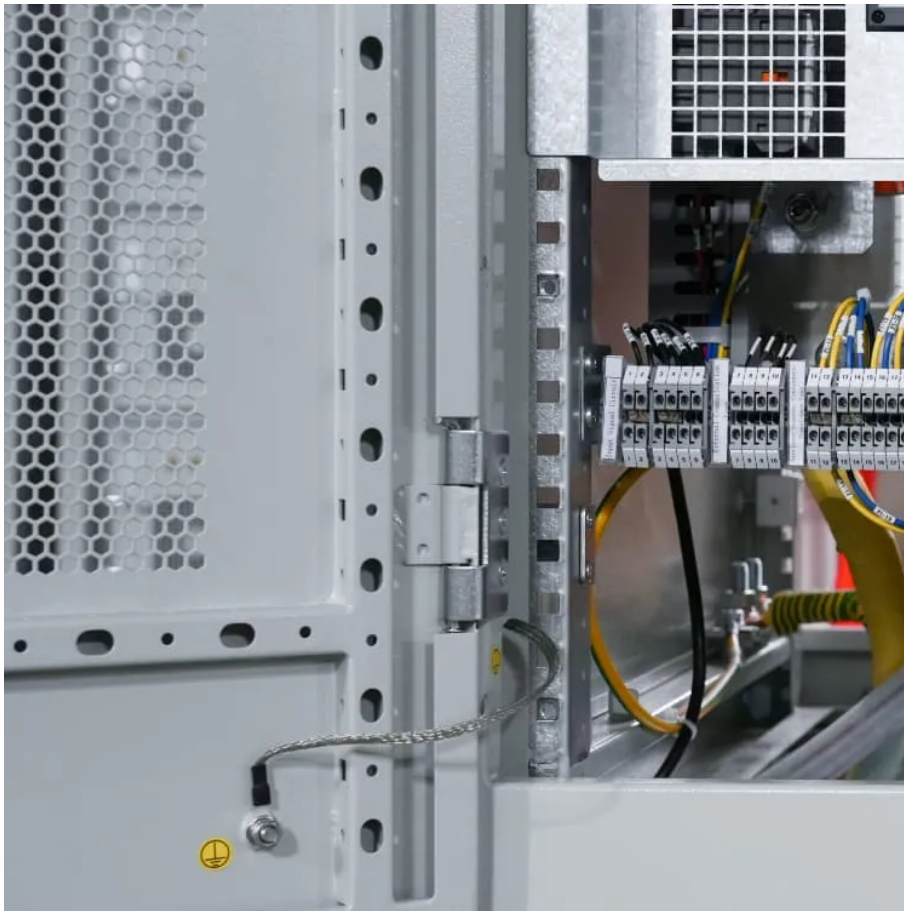


# Large wind power plant system





## Overview

---

The increasing complexity of power systems necessitates the development of aggregation techniques to address specific issues. Model reduction is crucial to expand simulation capacity, ensuring the stability.

Why are large-scale wind power plants important?

Although the development of wind power plants (WPPs) has made a significant contribution to addressing the demand for clean and cheap energy, the integration of large-scale WPPs introduces a series of technical challenges to power system operations. These challenges involved control, protection, and adherence to specified power quality standards.

Why is a wind power plant important?

The initial investment for a wind power plant is very high; hence, optimal utilization of resources is a prerequisite for any wind farm project. On the other hand, the intermittent nature of wind imposes operational issues in the power system having a large penetration of wind power.

Can large-scale wind power be integrated into the power grid?

When large-scale wind power is integrated into the power grid, it will bring a significant technical challenge: the highly variable nature of wind power poses a threat to the safe and stable control of the power, frequency, and voltage in the power system.

Why is capturing large amounts of wind energy important today?

Hence, capturing large amounts of wind energy is essential today. The large-scale integration of wind power sources must be evaluated and mitigated to develop a sustainable future power system. Wind energy research and the government are working together to overcome the potential barriers associated with its penetration into the power grid.



## Large wind power plant system

---

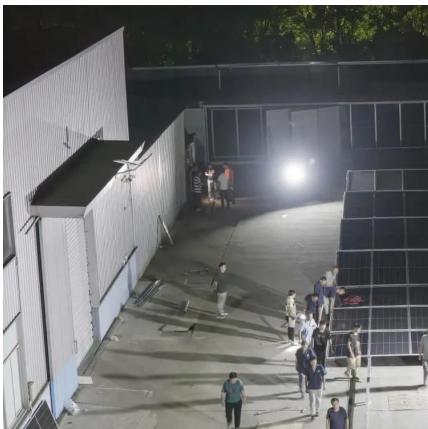


### Dynamic Performance and Power Quality of Large-Scale Wind Power Plants

Jun 23, 2025 · Although the development of wind power plants (WPPs) has made a significant contribution to addressing the demand for clean and cheap energy, the integration of large ...

### [Top 13 Largest Wind Farms in the World by Capacity](#)

Apr 7, 2025 · Wind power has become one of the leading sources of clean energy around the world. Countries are building massive wind farms to reduce reliance on fossil fuels and meet ...



### Smart Planning of Large-Scale Wind Farms for Power Systems ...

Aug 8, 2025 · The initial investment for a wind power plant is very high; hence, optimal utilization of resources is a prerequisite for any wind farm project. On the other hand, the intermittent ...

### [Transforming offshore wind farms into synergistic ...](#)

4 days ago · Its true value emerges when integrated into holistic systems combining offshore wind farms with coastal power plants, energy storage, and marine ranches.



### Developing a collector system aggregation technique of a large ...

Dec 1, 2023 · In addition to their application to large-scale wind power plant models, the principles of the PUFA technique can also be applied to detailed large-scale PV power plant models to ...



### [Design and operation of power systems with large ...](#)

Aug 12, 2021 · The IEA WIND Task 25 also known as the Design and Operation of Power Systems with Large Amounts of Wind Power, Task 25 of IEA Implementing Agreement on ...



### Advances in model predictive control for large-scale wind power

Jul 1, 2024 · A comprehensive review on model predictive control methods in power systems with large-scale wind power integration is conducted.





### **(PDF) Modeling and Simulation of a Large-Scale Wind Power Plant**

Mar 21, 2023 · The load demand to a power grid, as well as the interest in clean and low-cost energy resources, has led to the high integration of wind power plants into power system grids. ...

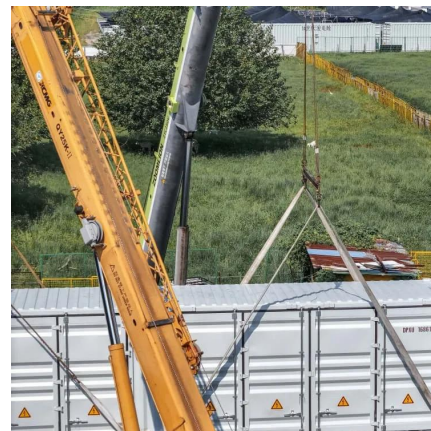


### [\(PDF\) Modeling and Simulation of a Large ...](#)

Mar 21, 2023 · The load demand to a power grid, as well as the interest in clean and low-cost energy resources, has led to the high integration of ...

### [Equivalencing the Collector System of a Large Wind...](#)

Sep 26, 2013 · Our effort to develop an equivalent representation of the collector system for wind power plants is an attempt to simplify power system modeling for future developments or ...



### [Top 13 Largest Wind Farms in the World by ...](#)

Apr 7, 2025 · Wind power has become one of the leading sources of clean energy around the world. Countries are building massive wind farms to ...



## Large-scale wind power grid integration challenges and their ...

Sep 12, 2023 · Hence, capturing large amounts of wind energy is essential today. The large-scale integration of wind power sources must be evaluated and mitigated to develop a sustainable ...



## Contact Us

---

For technical specifications, project proposals, or partnership inquiries, please visit:  
<https://eiei.pl>

## Scan QR Code for More Information



<https://eiei.pl>