

Juba solar Power Station System





Overview

How much power can a 20MW solar plant produce in Juba?

The 20MW solar plant can generate sufficient power to supply electricity to up to 16,000 households in Juba, significantly reducing energy costs and bolstering grid reliability, said the project's developer.

What is a solar power plant in South Sudan?

Image: The recently launched 20MW solar energy plant in South Sudan.
Credit: Ezra Group A public-private partnership in South Sudan has launched the country's first major solar power plant and Battery Energy Storage System (BESS) in the capital Juba, where it is expected to provide electricity to thousands of homes.

How will a 33kV substation work in Juba?

To distribute electricity to the consumers of Juba, 33kV will require to be stepped down to a distribution voltage level of 11kV. At the same time, an 11kV feeder needs to be constructed around the city. The proposed 33/11kV substation may be designed as shown with the single line diagram in Figure below.

Does jedco need a solar plant?

The solar plant is set to contribute 19% of the total energy distributed by JEDCO, complementing existing thermal power plants. However, to ensure reliability and long-term sustainability, additional renewable energy sources, such as the government-owned Nisitu Solar Plant, will be crucial in supplementing the thermal output, said the Group.



Juba solar Power Station System



[South Sudan launches 20MW solar energy plant , Pumps Africa](#)

Feb 3, 2025 · The 20MW solar facility is designed to supply power to approximately 16,000 households in Juba, significantly decreasing energy prices and improving grid stability. The ...

[Aptech Africa successfully installs a solar ...](#)

...

Sep 21, 2023 · The solar plant now operates in conjunction with an existing 30 MW diesel plant, working together to ensure a reliable and cheaper ...



[Power plant profile: Juba Solar PV Park, South Sudan](#)

Oct 21, 2024 · Juba Solar PV Park is a 20MW solar PV power project. It is planned in Central Equatoria, South Sudan. According to GlobalData, who tracks and profiles over 170,000 power ...

Aptech Africa successfully installs a solar power plant in Juba...

Sep 21, 2023 · The solar plant now operates in conjunction with an existing 30 MW diesel plant,



working together to ensure a reliable and cheaper power supply. During the daytime, ...



[Ministry targets 3000MW solar plant to combat pollution](#)

Jan 21, 2025 · By Kei Emmanuel Duku Ministry of Environment and Forestry welcomes the launch of a 20-megawatt solar power plant and 14-megawatt-hour battery system in Juba. Joseph ...

[Aptech Africa completes installation of a](#)

...

Aug 29, 2023 · This power plant is now benefiting the entire city by reducing power interruptions and lowering the cost of energy per unit for ...



Aptech Africa completes installation of a 26MW solar power ...

Aug 29, 2023 · This power plant is now benefiting the entire city by reducing power interruptions and lowering the cost of energy per unit for consumers. This system will provide much needed ...





Juba Solar Power Station Explained

The Juba Solar Power Station is a proposed 20MW solar power plant in South Sudan. The solar farm is under development by a consortium comprising Elsewedy Electric Company of Egypt, ...



South Sudan: First major solar energy, BESS plant launched

Jan 27, 2025 · Image: The recently launched 20MW solar energy plant in South Sudan. Credit: Ezra Group A public-private partnership in South Sudan has launched the country's first major ...

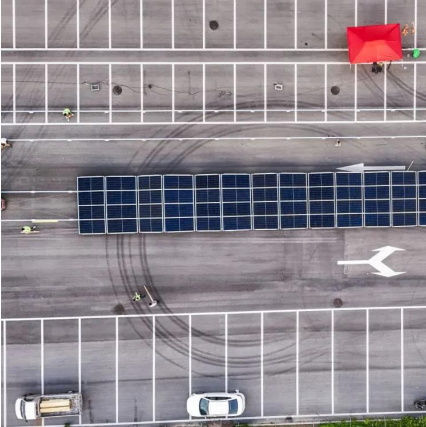
Juba (Elsewedy Power) solar farm

Dec 4, 2025 · Juba (Elsewedy Power) solar farm is a solar photovoltaic (PV) farm under construction in Juba, Juba Payam, Juba County, Central Equatoria, South Sudan.



South Sudan 3 mw solar power plant

The Juba Solar Power Station is a proposed 20 MW (27,000 hp) solar power plant in South Sudan. The solar farm is under development by a consortium comprising Elsewedy Electric ...



[Solar tower power plant South Sudan](#)

The Juba Solar Power Station is a proposed 20 MW (27,000 hp) solar power plant in South Sudan. The solar farm is under development by a consortium comprising Elsewedy Electric ...



Contact Us

For technical specifications, project proposals, or partnership inquiries, please visit:
<https://eiei.pl>

Scan QR Code for More Information



<https://eiei.pl>