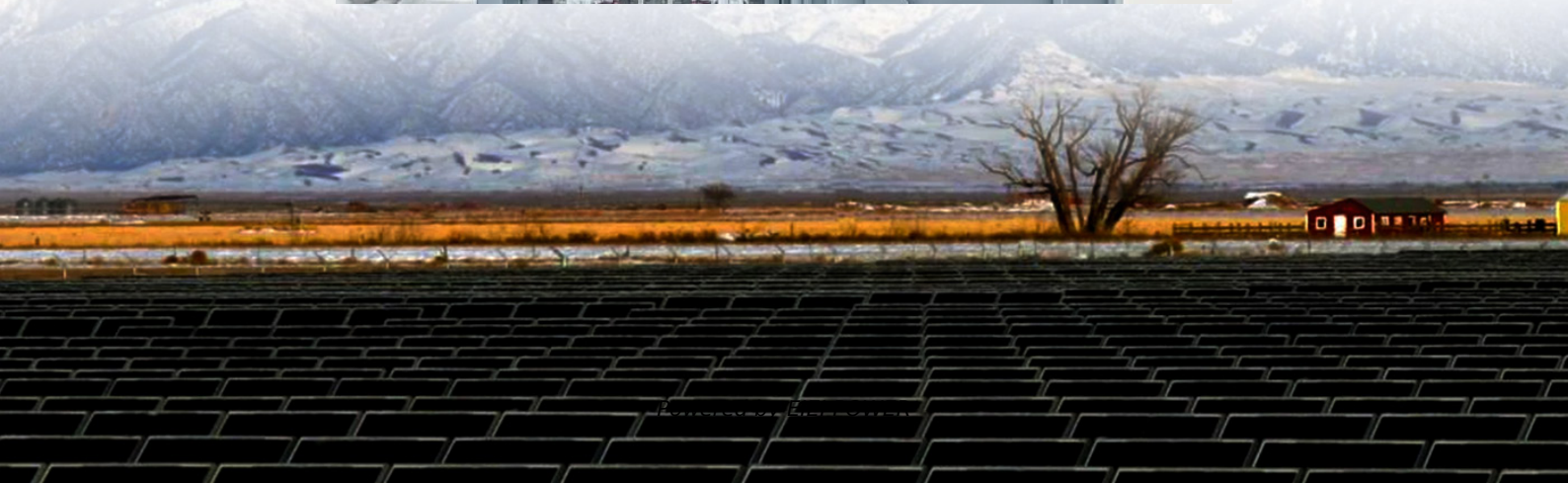


Is the power supply of the communication system base station energy-efficient





Overview

How much energy does a communication base station use?

In this region, the communication base stations are equipped with energy storage systems with a rated capacity of 48 kWh and a maximum charge/discharge power of 15.84 kW. The self-discharge efficiency is set at 0.99, and the state of charge (SOC) is allowed to range between a maximum of 0.9 and a minimum of 0.1. Figure 3.

Why is energy storage important in a 5G base station?

With the rapid development of 5G base station construction, significant energy storage is installed to ensure stable communication. However, these storage re.

What is the impact of base stations?

The impact of the Base Stations comes from the combination of the power consumption of the equipment itself (up to 1500 Watts for a nowadays macro base station) multiplied by the number of deployed sites in a commercial network (e.g. more than 12000 in UK for a single operator).

What is the difference between a power system and a communication system?

A power system supplies energy, and a communication system meets the demand for information exchange. A BS is the main intermediary between a communication network and a power network. For the communication network, it is an important transfer point for wireless information transmission.



Is the power supply of the communication system base station energy efficient?



Coordinated scheduling of 5G base station energy storage ...

Sep 25, 2024 · During main power failures, the energy storage device provides emergency power for the communication equipment. A set of 5G base station main communication equipment is ...

[Communication Base Station DC Energy Storage: Powering ...](#)

Have you ever wondered why communication base stations consume 60% more energy than commercial buildings? As 5G deployments accelerate globally, the DC energy storage ...



Base Station Energy Efficiency: Key Strategies for Sustainable ...

Aug 25, 2025 · Can renewable energy fully power a base station? Yes, in many rural and off-grid areas, solar or wind-powered base station sites operate independently from the electrical grid, ...

[Power consumption based on 5G communication](#)

Oct 17, 2021 · This paper proposes a power control algorithm based on energy efficiency, which combines cell breathing technology and base station sleep technology to reduce base station ...



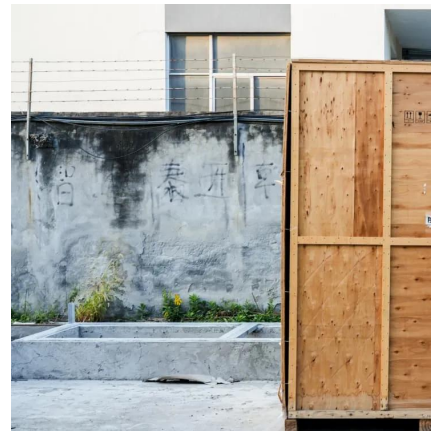
[Mathematical Modelling of the Power Supply System of ...](#)

Aug 19, 2025 · Abstract: The Stable operation of mobile communication base stations depends on a continuous and reliable power supply. Power outages can lead to a decrease in ...



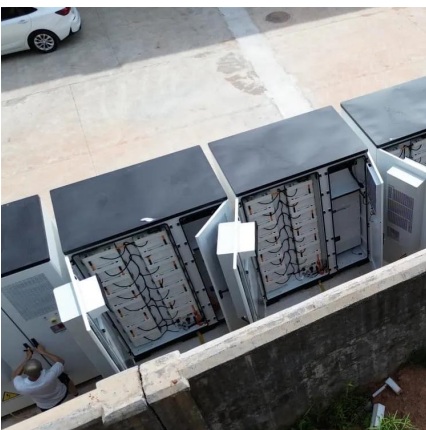
[Energy-efficiency schemes for base stations in 5G ...](#)

In today's 5G era, the energy efficiency (EE) of cellular base stations is crucial for sustainable communication. Recognizing this, Mobile Network Operators are actively prioritizing EE for ...



Optimal energy-saving operation strategy of 5G base station ...

Dec 1, 2025 · The energy storage system is used to store excess electrical energy during low communication demand periods and release it during high communication demand periods, in ...





Application of smart power usage on the communication base station

Dec 26, 2024 · In today's digital era, communication base station [...] In today's digital era, communication base stations are the key infrastructure for information transmission, and its ...



Energy-Efficient Base Stations , part of Green Communications

Aug 29, 2022 · The impact of the Base Stations comes from the combination of the power consumption of the equipment itself (up to 1500 Watts for a nowadays macro base station) ...

5G and energy internet planning for power and communication ...

Mar 15, 2024 · Our research addresses the critical intersection of communication and power systems in the era of advanced information technologies. We highlight the strategic ...



Coordinated scheduling of 5G base station ...

Sep 25, 2024 · During main power failures, the energy storage device provides emergency power for the communication equipment. A set of 5G ...



[Application of smart power usage on the ...](#)

Dec 26, 2024 · In today's digital era, communication base station [...] In today's digital era, communication base stations are the key infrastructure for ...



Contact Us

For technical specifications, project proposals, or partnership inquiries, please visit:
<https://eiei.pl>

Scan QR Code for More Information



<https://eiei.pl>