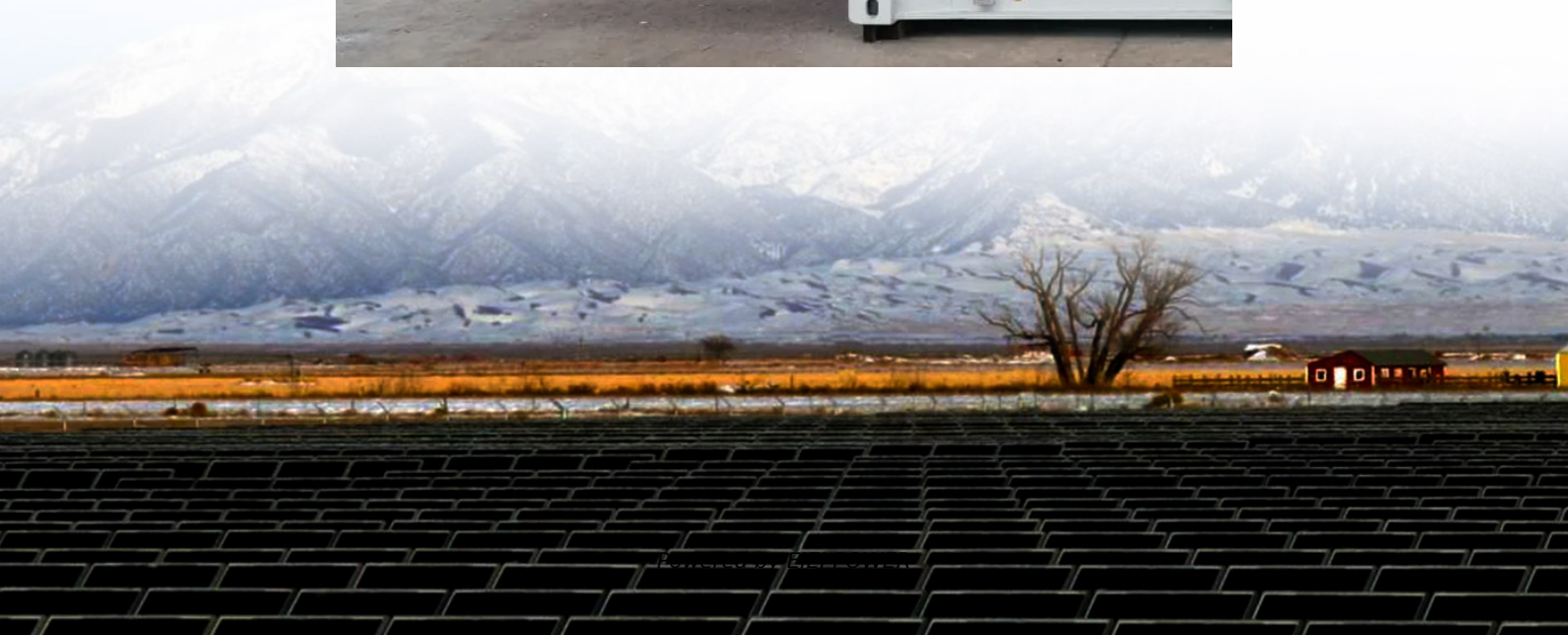


# Is 5g base station considered weak current





## Overview

---

Do base stations dominate the energy consumption of the radio access network?

Furthermore, the base stations dominate the energy consumption of the radio access network. Therefore, it is reasonable to focus on the power consumption of the base stations first, while other aspects such as virtualization of compute in the 5G core or the energy consumption of user equipment should be considered at a later stage.

What should be considered in a 5G network?

The further completion of the map of power models (Fig. 2) and systematization of their features as well as the comparison is also part of the future work. Lastly, the aspects of computing (network function virtualization) and functional split options of the RAN need to be considered for 5G networks as well.

Should power consumption models be used in 5G networks?

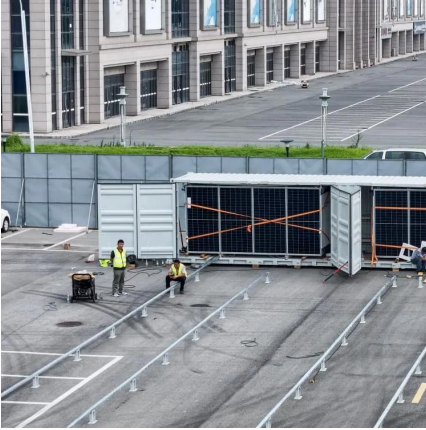
This restricts the potential use of the power models, as their validity and accuracy remain unclear. Future work includes the further development of the power consumption models to form a unified evaluation framework that enables the quantification and optimization of energy consumption and energy efficiency of 5G networks.

What is 3GPP base station model?

The central specification body of cellular networks, the 3GPP, presents a base station model to facilitate energy efficiency improvements for 3GPP Release 18 in . It is based on the user equipment power model of the 3GPP in structure, presentation, and approach.



## Is 5g base station considered weak current



### The Critical Role of Redundant Power Design in 5G Base Stations

When 5G signals penetrate urban high-rises and reach remote rural areas, few people pay attention to the 'energy core' behind it all-- the base station power system. Among the many ...

### [Research on the application of weak power system power ...](#)

In order to improve the stability and efficiency of power supply in 5G communication base station, the application of weak current system in 5G base station is studied. Theoretical analysis and ...



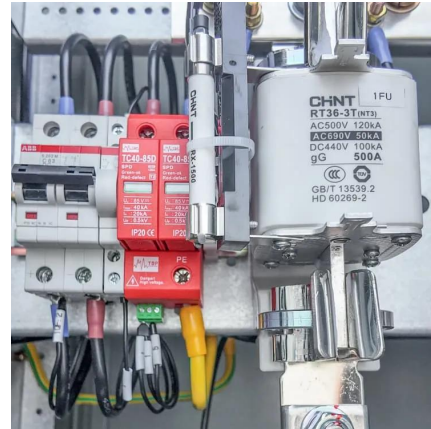
### [5G macro base station power supply design strategy and ...](#)

Oct 24, 2024 · Suggestions on 5G small base station power supply design In terms of small base stations, Cheng Wentao believes that small base stations in the 5G era are very different from ...



### [Stochastic Modeling of a Base Station in 5G Wireless ...](#)

Nov 15, 2024 · The 5G networks offer enhanced data speeds and network capacity but pose energy efficiency challenges for base stations. Frequency band selection impacts network ...



### Comparison of Power Consumption Models for 5G Cellular Network Base

Jul 1, 2024 · Furthermore, the base stations dominate the energy consumption of the radio access network. Therefore, it is reasonable to focus on the power consumption of the base stations ...



### [Energy Management of Base Station in 5G and B5G: Revisited](#)

Apr 19, 2024 · Since mmWave base stations (gNodeB) are typically capable of radiating up to 200-400 meters in urban locality. Therefore, high density of these stations is required for ...



### [Threshold-based 5G NR base station management for ...](#)

Mar 1, 2025 · In spite of promising outcomes in optimizing energy usage for Radio Access Network (RAN) Base Station (BS) hardware, deployment, and resource management, existing ...





[Why does 5g base station consume so much ...](#)

Apr 3, 2025 · The power consumption of the 5G base station mainly comes from the AU module processing and conversion and high power ...



**Electric load characteristics analysis of 5G base stations in ...**

Nov 14, 2022 · 5G base station (BS) is a fundamental part of 5th generation (5G) mobile networks. To meet the high requirements of the future mobile communication, 5G BS has ...

[Comparison of Power Consumption Models for 5G ...](#)

Jun 30, 2024 · This paper conducts a literature survey of relevant power consumption models for 5G cellular network base stations and provides a comparison of the models. It highlights ...



[Why does 5g base station consume so much power and how ...](#)

Apr 3, 2025 · The power consumption of the 5G base station mainly comes from the AU module processing and conversion and high power-consuming high radio frequency signals, the ...



## Contact Us

---

For technical specifications, project proposals, or partnership inquiries, please visit:  
<https://eiei.pl>

### Scan QR Code for More Information



<https://eiei.pl>