

Introduction to external equipment for base station communication





Overview

What are base stations & how do they work?

Base stations are the critical components that enable mobile phones and other devices to connect to cellular networks. Here's how they work in a typical mobile network: Signal Transmission and Reception: Mobile devices communicate with the nearest base station via radio waves.

What is a mobile base station?

Base Station generally refers to the "public mobile communication base station", (abbr.: BS), the base station is used to provide signals to mobile phones. It usually consists of the following four parts: Antenna-Feeder System Responsible for signal transmission and reception, including antennas and feeders.

What is a base station in telecommunications?

In telecommunications, a base station is a fixed transceiver that serves as the main communication point for one or more wireless mobile client devices. It not only connects wireless devices to each other but also links them to other networks or devices, often through dedicated high-bandwidth wired or fiber optic connections.

What are the components of a base station?

The base station will have one or more RF antennas installed to transmit and receive RF signals from other devices. The block diagram of a base station typically includes the following key components: Baseband Processor: The baseband processor too deals with different communication protocols and interfaces with mobile network infrastructure.



Introduction to external equipment for base station communication



What Is the Role of a Base Station in Wireless Communication?

Jun 27, 2025 · Base stations are the backbone of wireless communication networks, playing a pivotal role in signal transmission, network reliability, and high-speed data connectivity. As ...

What Is A Base Station?

Apr 22, 2024 · A base station is an integral component of wireless communication networks, serving as a central point that manages the transmission and reception of signals between ...



Understanding Base Stations: The Backbone of Wireless Communication

Jan 6, 2025 · In today's digital age, reliable and high-speed communication is more essential than ever. Whether it's for mobile phones, internet services, or IoT (Internet of Things) devices, ...

4.Basic Configuration of Base Stations , About ...

The basic base station equipment for digital mobile communications systems consists of amplifiers (AMP) to amplify the transmission and reception ...



[Base Station Antenna Types: A Comprehensive Guide](#)

Table of Contents: - Introduction - What is a base station antenna? - Types of base station antennas - Omnidirectional antennas - Directional antennas - Sector antennas - Panel ...



[Base Station Antenna Types: A ...](#)

Table of Contents: - Introduction - What is a base station antenna? - Types of base station antennas - Omnidirectional antennas - Directional antennas - ...



Base Station Equipment - Types and Applications of Mobile Communication

« Base Station Technology: An Overview » by IEEE Communications Magazine: This article provides a general overview of different base station types, their functions, and the ...





4. Basic Configuration of Base Stations , About DOCOMO

The basic base station equipment for digital mobile communications systems consists of amplifiers (AMP) to amplify the transmission and reception signals to desired levels, modems ...



Base Stations

Jul 23, 2025 · The present-day tele-space is incomplete without the base stations as these constitute an important part of the modern-day scheme of wireless communications. They are ...

Base Station Equipment - SolveForce Fiber Internet, Cloud ...

Sep 3, 2023 · Base station equipment, also known as cell site equipment, is a crucial component of cellular networks and wireless communication systems. It plays a central role in facilitating ...



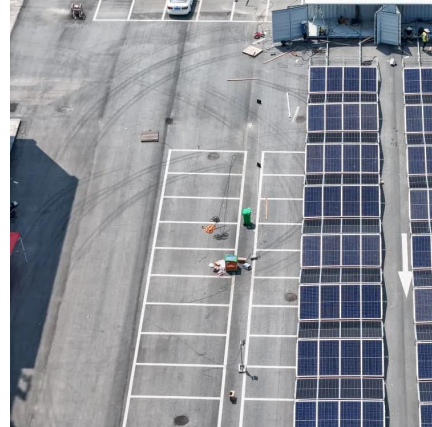
What Are Base Station Antennas? Complete ...

Nov 20, 2024 · In modern telecommunications systems, the base station antenna stands out as an undeniable and crucial component to facilitate ...



[Introduction of base station and Remote Radio Unit](#)

Jul 22, 2022 · Base Station, generally refers to the "public mobile communication base station", (abbr.: BS), the base station is used to provide signals to mobile phones. It usually consists of ...



[What Are Base Station Antennas? Complete Guide](#)

Nov 20, 2024 · In modern telecommunications systems, the base station antenna stands out as an undeniable and crucial component to facilitate our daily communication from voice calls to ...

Contact Us

For technical specifications, project proposals, or partnership inquiries, please visit:
<https://eiei.pl>

Scan QR Code for More Information



<https://eiei.pl>