

# If the inverter is charged with 220





## Overview

---

### How to charge an inverter battery?

Charging an inverter battery might seem daunting, but it's quite straightforward once you understand the steps. First, ensure that the inverter is turned off before connecting the battery. This avoids the risk of sparks or short circuits, which could harm both the battery and the inverter.

### Do inverters need to be fully charged?

Batteries used in inverters are powered by chemical processes, and for these processes to take place, the battery must be completely charged. There won't be any problems here if the inverter is the proper size. Now you know how much you should charge your battery and what to do once it is done entirely.

### How long does it take an inverter to charge a battery?

Typically, an inverter may take anywhere from 6 to 12 hours to full charge a standard tubular battery. The key influencer here is the charger's output capacity—higher capacities result in faster charging times. Conversely, UPS systems tend to charge more quickly due to their smaller battery sizes and efficient charging mechanisms.

### Why is my inverter not charging?

An inverter failing to charge the battery can be frustrating. Common reasons include incorrect settings, battery faults, or wiring issues. Firstly, verify the inverter settings to ensure they match your battery specifications. Battery issues can also hinder charging. Check for any visible signs of damage, such as swelling or leakage.



## If the inverter is charged with 220



### [How Do I Know If My Inverter Battery Is Full?](#)

Aug 23, 2023 · Inverter batteries are essential for providing backup power during outages or when using inverters in off-grid systems. It is crucial to determine if your inverter battery is fully ...

### [Maximum Charging Current of 220Ah Tubular Inverter ...](#)

Mar 26, 2024 · Proper charging current is crucial for maintaining the longevity of the inverter battery. If it is charged outside its recommended rates, issues like overcharging can occur. ...



### [How To Charge Inverter Battery , Tips & Charging Time](#)

The UPS and inverter charging time varies based on several factors, including battery capacity and charger efficiency. Typically, an inverter may take anywhere from 6 to 12 hours to full ...

### [What is the Maximum Charging Current of ...](#)

Jun 26, 2024 · Inverter batteries are the backbone of backup power ...



## [Can I Charge a Car Battery with an Inverter?](#)

Mar 19, 2025 · By choosing the right charging program, you can ensure that your car battery is charged efficiently and safely, extending the life of the ...



## [How To Charge Inverter Battery , Tips & Charging Time](#)

Oct 23, 2024 · The UPS and inverter charging time varies based on several factors, including battery capacity and charger efficiency. Typically, an inverter may take anywhere from 6 to 12 ...



## [What to Do When Inverter Battery is Fully ...](#)

Nov 17, 2023 · When fully charged, most batteries should register between 12 and 14 volts. It has got to be charged further if yours registers less ...





## [How to Know Inverter Battery Is Fully Charged](#)

Sep 18, 2024 · On the lookout for LED indicators, voltage readings, and alarms, discover how to determine if your inverter battery is fully charged for optimal performance and longevity. Learn ...

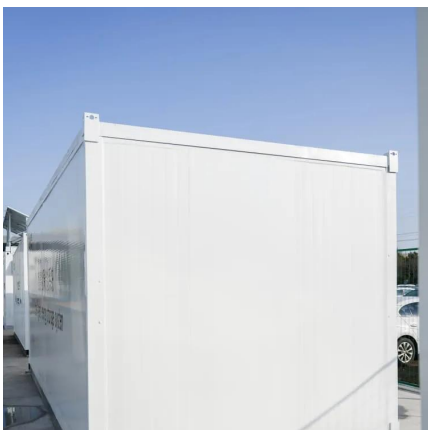


## [Maximum Charging Current of 220Ah Tubular ...](#)

Mar 26, 2024 · Proper charging current is crucial for maintaining the longevity of the inverter battery. If it is charged outside its recommended rates, ...

## [How long can the Inverter 12v 220v 1500w run with a fully](#)

Our Product Range and Advantages As a supplier, we not only offer the 12V 220V 1500W inverter but also a wide range of other high - quality inverters, such as the Inverter Off Grid 8kw and ...



## [Can You Charge a Battery While Using an Inverter?](#)

1. Inverter Your inverter is going to be much better off if you charge your battery while using it. In simple terms, an inverter needs to draw fewer amps with a fully charged battery which helps to ...



## [How Do I Know If My Inverter Battery Is Full?](#)

Aug 23, 2023 · Inverter batteries are essential for providing backup power during outages or when using inverters in off-grid systems. It is crucial to ...



## [Can I Use an Inverter to Charge a Battery](#)

May 4, 2025 · Learn how using an inverter can charge your battery effectively and safely, ensuring your power needs are met confidently and reliably.

## [Can You Charge a Battery While Using an ...](#)

1. Inverter Your inverter is going to be much better off if you charge your battery while using it. In simple terms, an inverter needs to draw fewer ...



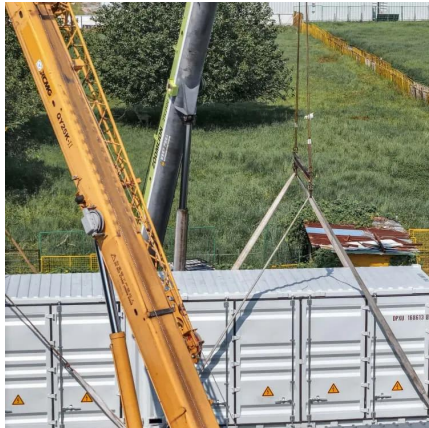
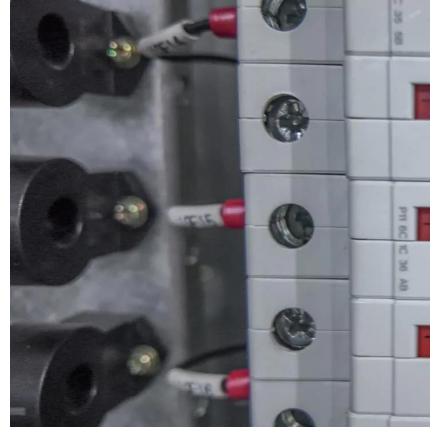
## [Can I Charge a Car Battery with an Inverter?](#)

Mar 19, 2025 · By choosing the right charging program, you can ensure that your car battery is charged efficiently and safely, extending the life of the battery. Using an Inverter Correctly ...



## [How to Know Inverter Battery Is Fully ...](#)

Sep 18, 2024 · On the lookout for LED indicators, voltage readings, and alarms, discover how to determine if your inverter battery is fully charged ...

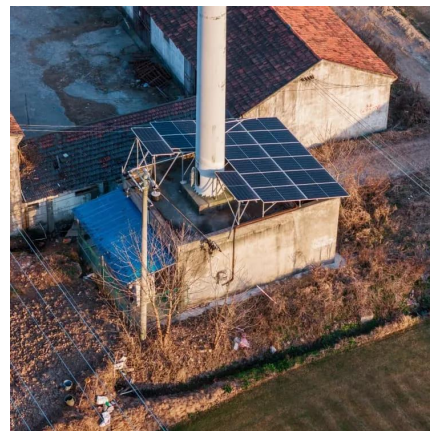


## [What to Do When Inverter Battery is Fully Charged?](#)

Nov 17, 2023 · When fully charged, most batteries should register between 12 and 14 volts. It has got to be charged further if yours registers less than 12 volts. Also See: How to Read Solar ...

## **What is the Maximum Charging Current of 220 Ah Tubular Inverter**

Jun 26, 2024 · Inverter batteries are the backbone of backup power solutions, crucial for ensuring uninterrupted electricity supply during outages. For those considering or using 220 Ah tubular ...



## **Contact Us**

---

For technical specifications, project proposals, or partnership inquiries, please visit:  
<https://eiei.pl>



## Scan QR Code for More Information



<https://eiei.pl>