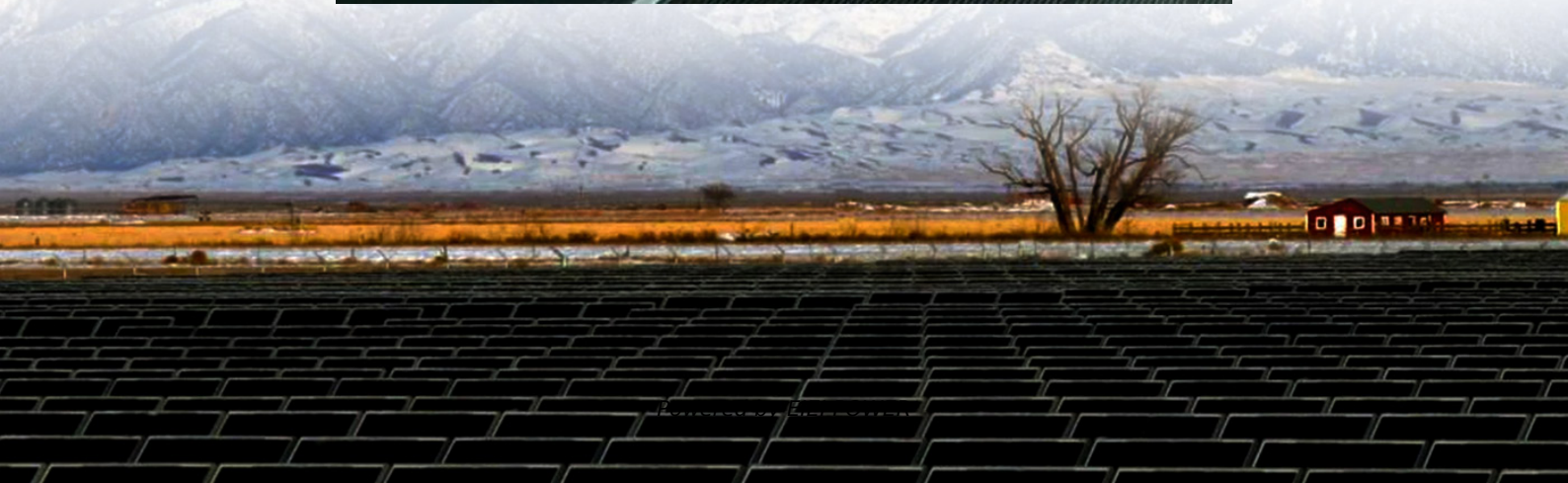


Huawei s 5g base stations are expensive and consume a lot of power





Overview

Base stations with multiple frequencies will be a typical configuration in the 5G era. It's predicted that the proportion of sites with more than five frequency bands will increase from 3 percent in 2016 to 45 percent.

Are 5G base stations causing more energy consumption?

However, Li says 5G base stations are carrying five times the traffic as when equipped with only 4G, pushing up power consumption. The carrier is seeking subsidies from the Chinese government to help with the increased energy usage.

Does China Mobile have a 5G base station?

China Mobile has tried using lower cost deployments of MIMO antennas, specifically 32T32R and sometimes 8T8R rather than 64T64R, according to MTN. However, Li says 5G base stations are carrying five times the traffic as when equipped with only 4G, pushing up power consumption.

How will 5G affect the energy consumption of mobile operators?

Edge compute facilities needed to support local processing and new internet of things (IoT) services will also add to overall network power usage. Exact estimates differ by source, but MTN says the industry consensus is that 5G will double to triple energy consumption for mobile operators, once networks scale.

Can 5G reduce energy consumption?

However, the energy consumption of 5G networks is today a concern. In recent years, the design of new methods for decreasing the RAN power consumption has attracted interest from both the research community and standardization bodies, and many energy savings solutions have been proposed.



Huawei s 5g base stations are expensive and consume a lot of power



[Huawei 5G base stations consume too much power](#)

However, Li says 5G base stations are carrying five times the traffic as when equipped with only 4G, pushing up power consumption. The carrier is seeking subsidies from the Chinese ...

5G Power: Creating a green grid that slashes costs, emissions

Jun 6, 2019 · Base stations with multiple frequencies will be a typical configuration in the 5G era. It's predicted that the proportion of sites with more than five frequency bands will increase from ...



5G base stations use a lot more energy than 4G base stations...

Apr 3, 2020 · According to Huawei data on RRU/BBU needs per site, the typical 5G site has power needs of over 11.5 kilowatts, up nearly 70% from a base station deploying a mix of 2G, ...

The carbon footprint response to projected base stations of China's 5G

Apr 20, 2023 · The power consumption of telecommunication base stations operating at full load increases abruptly, and the main equipment in 5G communication base stations operating ...



[What is the Power Consumption of a 5G Base Station?](#)

Nov 15, 2024 · Why is 5G Power Consumption Higher? 1. Increased Data Processing and Complexity These 5G base stations consume about three times the power of the 4G stations.

...



[Case Study: China Tower & Huawei](#)

Intelligent Peak Staggering Maximizes Site Battery Value, Reducing Electricity Cost by 17.1% As the deployment of 5G continues, the energy consumption of base stations increased

...



[Power Consumption Modeling of 5G Multi-Carrier Base ...](#)

Jan 23, 2023 · However, there is still a need to understand the power consumption behavior of state-of-the-art base station architectures, such as multi-carrier active antenna units (AAUs), ...





Base stations are expensive and consume a lot of power.

With the construction of 5G networks, the high cost of 5G base stations, especially the high energy consumption, has become widely known. Taking China Mobile as an example, in order ...



5G base stations use a lot more energy than ...

Apr 3, 2020 · According to Huawei data on RRU/BBU needs per site, the ...



Why does 5g base station consume so much ...

Apr 3, 2025 · The power consumption of the 5G base station mainly comes from the AU module processing and conversion and high power ...



Why does 5g base station consume so much power and how ...

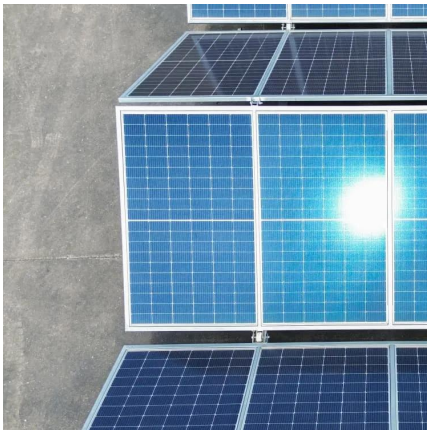
Apr 3, 2025 · The power consumption of the 5G base station mainly comes from the AU module processing and conversion and high power-consuming high radio frequency signals, the ...





How energy-efficient are Huawei's 5G base stations ...

Power Consumption: Huawei's 5G base stations have significantly lower power consumption compared to their 4G counterparts. This is achieved through advanced power management ...



Case Study: China Tower & Huawei

Intelligent Peak Staggering Maximizes Site Battery Value, Reducing Electricity Cost by 17.1% As the deployment of 5G continues, the energy ...

Contact Us

For technical specifications, project proposals, or partnership inquiries, please visit: <https://eiei.pl>

Scan QR Code for More Information



<https://eiei.pl>