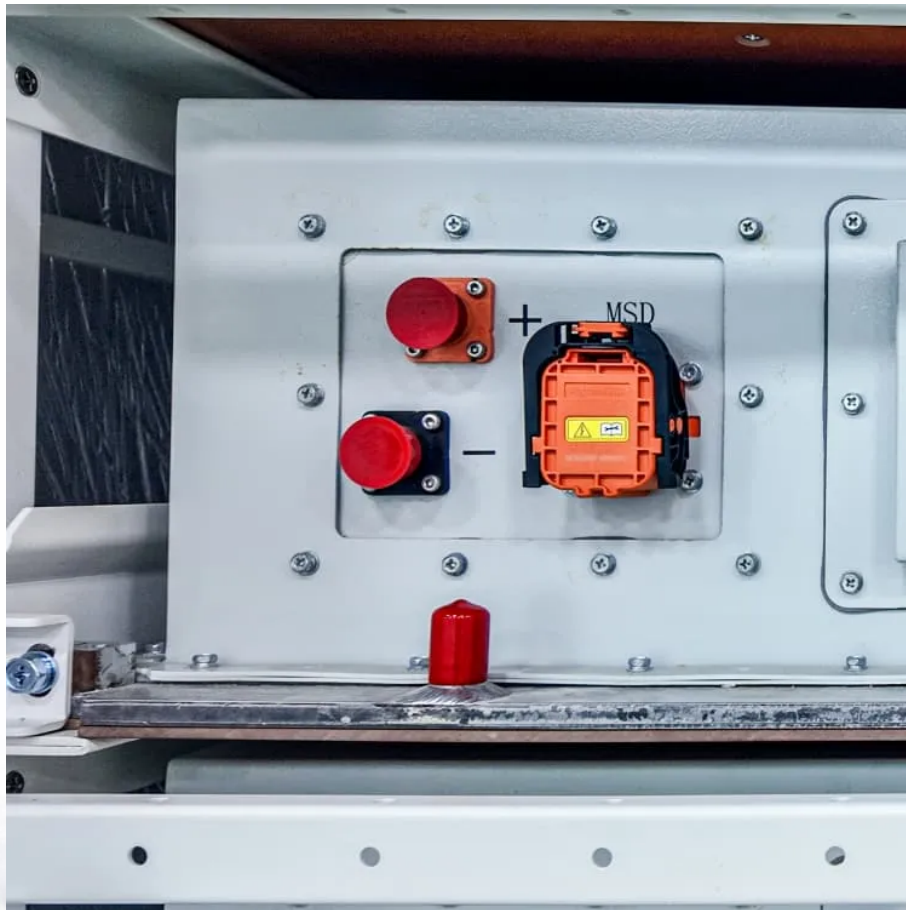


How to solve the collapse of wind power in solar container communication stations





Overview

How to reduce LpSP in complex solar-wind systems in China?

Capacities of complex solar-wind systems are optimized in various locations of China. Wind and solar energy intensity and complementarity affect system performance. Electric heater with TES and power cycle can greatly reduce LPSP economically. CSP plant is recommended to be introduced in most regions when low LPSP is pursued.

How to reduce LpSP in a wind farm?

Thus, the system, composed of PV plant, solar field, TES, power cycle, EH, and bidirectional inverter, can dramatically reduce LPSP from 59.9% to 6.6% in an economical way. Then, the battery is added to the system for more accurate power output adjustment. And the wind farm is finally adopted.

Does solar-wind system address future electricity demands?

Jiang, H. et al. Globally interconnected solar-wind system addresses future electricity demands. *Nat. Commun.* 16, 4523 (2025). Peng, L., Mauzerall, D. L., Zhong, Y. D. & He, G. Heterogeneous effects of battery storage deployment strategies on decarbonization of provincial power systems in China. *Nat. Commun.* 14, 4858 (2023).

Why do wind and solar energy systems have a lower LCOE?

However, there are also cases where the systems in locations with worse wind and solar energy resources achieve lower LCOE. This is because the better complementary characteristics of wind and solar energy reduce the redundant configuration of devices and thus reduce the initial investment costs.



How to solve the collapse of wind power in solar container commun



Capacity optimization and feasibility assessment of solar-wind ...

Sep 25, 2022 · The solar-wind hybrid renewable energy systems, including wind farm, photovoltaic (PV) plant, concentrated solar power (CSP) plant, electric heater, battery, and ...

Wind Mitigation for Solar Power Plants: A Smarter Approach ...

Mar 10, 2025 · As climate change intensifies, solar power plants are increasingly exposed to high-wind events that can severely damage photovoltaic (PV) panels, solar trackers, and heliostats. ...



Load frequency predictive control for power systems concerning wind

This article addresses a model predictive control (MPC) technique for load frequency control (LFC) system in the presence of wind power, communication delay, and denial-of-service ...

Grid-Interactive Novel Resilient Control of Solar PV-Wind ...

Jan 27, 2025 · Integrating solar photovoltaic (PV), wind, and battery storage (BS) systems into the grid introduces significant power quality (PQ) challenges. In particular, the intermittent nature



...



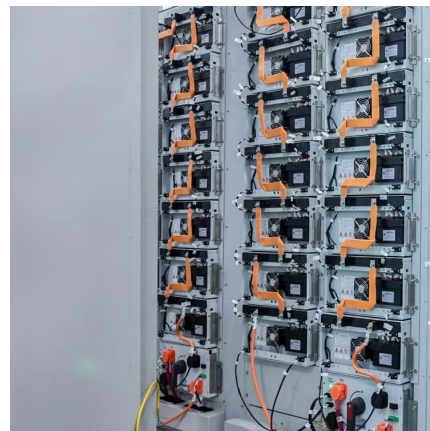
[Load frequency predictive control for power ...](#)

This article addresses a model predictive control (MPC) technique for load frequency control (LFC) system in the presence of wind power, ...



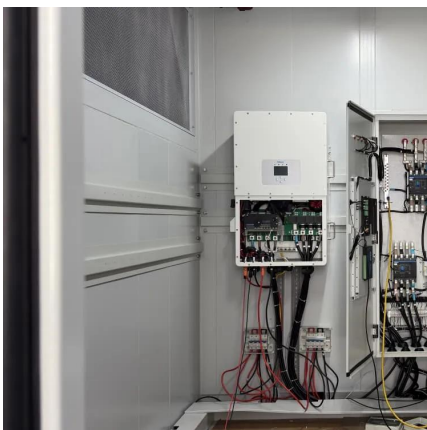
[Wind-solar hybrid for outdoor communication base ...](#)

4 days ago · Integrated Solar-Wind Power Container for Communications This large-capacity, modular outdoor base station seamlessly integrates photovoltaic, wind power, and energy ...



[IMPACTS OF WIND AND SOLAR POWER ON POWER ...](#)

Feb 21, 2025 · Wind and solar power plants have been demonstrated in simulation studies, practical tests and real-world implementations to improve the stability of a well-designed system.





Collapse Simulations of Communication Tower Subjected to Wind ...

Mar 4, 2020 · Request PDF , Collapse Simulations of Communication Tower Subjected to Wind Loads Using Dynamic Explicit Method , Given the premise that a communication tower is a ...



HOW TO SOLVE THE POWER SUPPLY PROBLEM OF COMMUNICATION BASE STATIONS

Battery standards for wind power in Jerusalem communication base stations The paper proposes a novel planning approach for optimal sizing of standalone photovoltaic-wind-diesel-battery ...

Strategies for climate-resilient global wind and solar power ...

Jun 18, 2025 · Climate-intensified supply-demand imbalances may raise hourly costs of wind and solar power systems, but well-designed climate-resilient strategies can provide help.



How to make wind solar hybrid systems for telecom stations?

Wind solar hybrid systems can fully ensure power supply stability for remote telecom stations. Meet the growing demand for communication services.



Contact Us

For technical specifications, project proposals, or partnership inquiries, please visit:
<https://eiei.pl>

Scan QR Code for More Information



<https://eiei.pl>