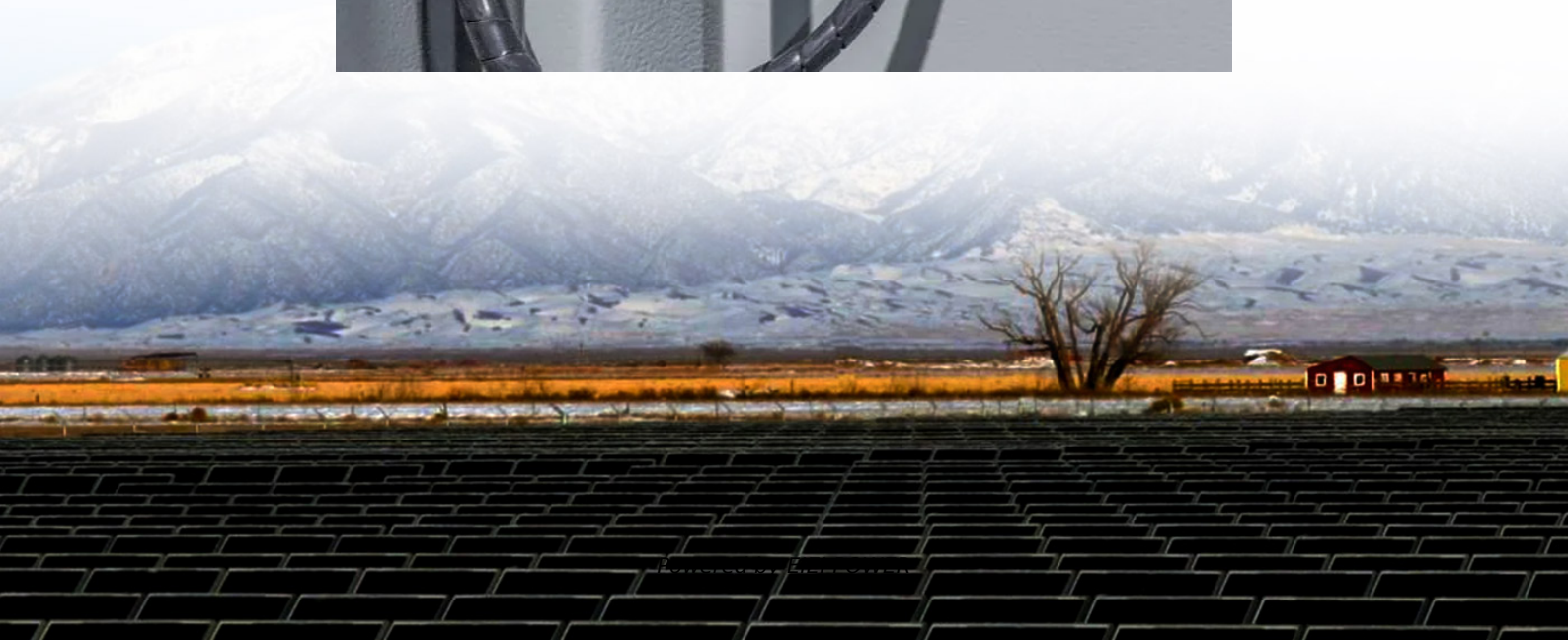


How to ground the battery line of an outdoor base station





Overview

How do you ground a power station?

Following the manufacturer's recommendations ensures you don't accidentally void your warranty or compromise safety. If grounding is necessary, connect a grounding wire from your power station's ground terminal to a ground rod driven into the earth.

Does a power station need a grounding wire?

If grounding is necessary, connect a grounding wire from your power station's ground terminal to a ground rod driven into the earth. This reduces the chance of electric shock from stray current and can stabilize voltage in some setups.

How do I equalize the grounding of a battery pack?

Additionally, connecting the isolated battery pack ground to earth ground before making other connections between the pack and the test system or external communications interface can help equalize grounds. 11. Connection Scenarios The following describes BMS grounding issues in different connection scenarios.

Why is grounding important in battery management systems (BMS)?

Grounding in Battery Management Systems (BMS) is crucial for ensuring voltage and current measurement accuracy. Accurate voltage measurements depend on a stable ground reference. If the BMS ground is improperly connected or affected by noise, voltage readings can become distorted.



How to ground the battery line of an outdoor base station



[Best Practices for Outdoor Grounding & Bonding ...](#)

Mar 5, 2025 · Best Practices for Outdoor Grounding & Bonding Terminations Connector Technology Electrical Connector o In their simplest form, join two or more conductors in a ...

[Where can the battery system be installed? What are the ...](#)

Typically, the Base Power system is installed near the electric meter, with 3ft of space allocated on the wall for mounting the automatic transfer switch, followed by a 3ft x 3ft ground footprint ...



[Best Location To Ground Battery \[Updated ...](#)

Jul 18, 2025 · The first thing that struck me about this topic wasn't just where to ground a battery, but how critical that spot really is. During hands-on ...

[What is the grounding requirement for an outdoor energy ...](#)

Nov 30, 2025 · When using a portable power station outdoors, it is important to ensure that the grounding conductor is properly installed and maintained. The grounding conductor should be



...



[R16AN0049EU: Importance of Grounding in Battery ...](#)

Jul 2, 2024 · Importance of Grounding in Battery Management Systems This application note explores the crucial role of grounding in battery management systems (BMS). It starts with ...



[Positive & Negative Ground Sites](#)

Apr 29, 2020 · When incorporating batteries into sites, it is very important to be aware of which configuration the site is using. For positive-ground systems (-48 volts DC), the positive (+) line ...



[Do I Need To Ground Home Battery Backup?](#)

Nov 11, 2025 · Introduction As home energy storage systems become increasingly popular, more homeowners are asking: "Do I need to ground my home battery backup?" Whether you're ...





Does a Portable Power Station Need to Be Grounded?

Mar 1, 2025 · Most portable power stations are designed to be self-contained and insulated, which means they don't always require external grounding. Brands like Bluetti, EcoFlow, and Jackery ...

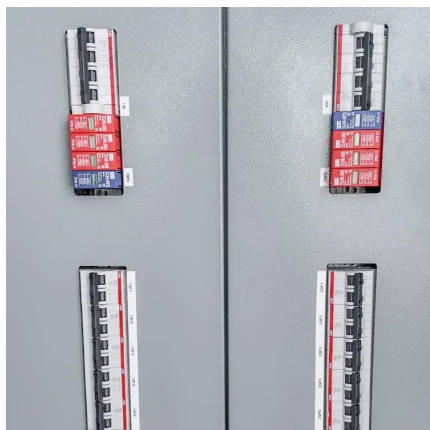


Does a Portable Power Station Need to Be Grounded?

Mar 1, 2025 · Most portable power stations are designed to be self-contained and insulated, which means they don't always ...

Why is it necessary to ground the battery negative on a off ...

Jul 17, 2024 · Why is it necessary to ground the battery negative on a off grid installation? I have a off grid installation and I fully understand the need for good earthing on the AC side of the ...



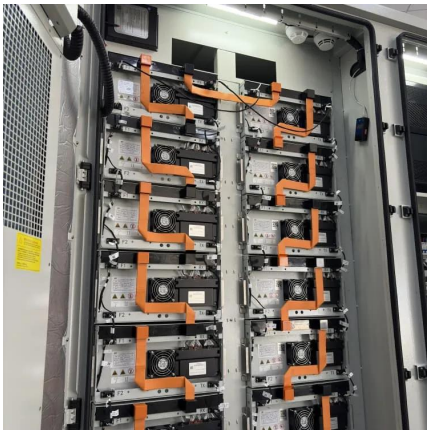
Grounding Practices in Power Distribution Systems

Default DescriptionSubstation Grounding Importance of Substation Grounding There are several factors that make substation grounding absolutely necessary. Safety of Personnel: By safely ...



[Best Location To Ground Battery \[Updated On: November ...](#)

Jul 18, 2025 · The first thing that struck me about this topic wasn't just where to ground a battery, but how critical that spot really is. During hands-on testing, I found that a poor grounding ...



[Grounding Practices in Power Distribution ...](#)

Default DescriptionSubstation Grounding
Importance of Substation Grounding There are several factors that make substation grounding ...

Contact Us

For technical specifications, project proposals, or partnership inquiries, please visit:
<https://eiei.pl>

[Scan QR Code for More Information](#)



<https://eiei.pl>