

How to connect external power supply to rtk base station





Overview

How do I power a RTK base station?

To power the base station from a power bank or PC. RTK base station has an SMA connector to connect an antenna. RTK base station does not include, but requires a good quality GPS/ GNSS antenna. RTK base station supports full L1/L2/L5 bands.

Why should I set up my own RTK base station?

Setting up your own RTK base station gives you full control over your GNSS workflow, saves on subscription costs, and boosts your field accuracy. Whether you're working on construction, land surveying, or agriculture, this step-by-step guide will help you confidently set up a stable RTK base station using professional-grade equipment.

How do I connect the RTK base station to my PC?

Connect the antenna to your receiver. Put the antenna in completely open air for testing functionality. Connect the RTK base station to your PC with a USB to USB-C cable. The first time you connect the RTK Base Station to a new PC, you will only see a new hard disk on your computer. Open the disk and manually install the Septentrio drivers.

Does RTK base station have an SMA connector?

RTK base station has an SMA connector to connect an antenna. RTK base station does not include, but requires a good quality GPS/ GNSS antenna. RTK base station supports full L1/L2/L5 bands. If you want to get the most out of this base, we recommend to use Budget Survey Tripleband GNSS Antenna (IP66).



How to connect external power supply to rtk base station



[User Guide: RTK Base Station](#)

Apr 11, 2025 · The ArduSimple RTK Base Station, powered by the Septentrio mosaic-X5 module, is designed to function as a Continuously Operating Reference Station (CORS) to provide high ...

[Common ways to set up a base station](#)

Dec 1, 2025 · SPS Modular only: Connect the GNSS antenna to the receiver using the appropriate cable. If required, connect the GNSS receiver to an external 12 V power supply. ...



[How to Build a DIY GNSS RTK Base Station for Onocoy](#)

In this guide, you will learn how to build your own affordable GNSS RTK base station for onocoy. This station uses an ESP32 microcontroller and a Unicore UM980 GNSS receiver. The total ...

[GNSS ??????? ??????? RTK](#)

Nov 4, 2022 · Connect the power cable to the base station and tighten the tightening nut on the connector. Connect the power supply to a 220V socket and protect from moisture.



[Wireless GNSS RTK Rover and Base Set](#)

The main boards used in the Base and Rover stations are identical. The bill of materials for the board is detailed in BOM_v1.txt. The peripheral block interfaces (5) are organized on the left ...



[AgGPS 432/442 GPS Receivers User Guide](#)

Dec 3, 2020 · When you use an external power supply, the integrated battery provides a backup power supply, enabling you to maintain continuous operation through a mains power failure.



[User Guide: RTK Base-Rover Calibrated Surveyor Kit](#)

Apr 11, 2025 · Package RTK Base-Rover Calibrated Surveyor Kit is customizable kit, you can choose the set of products yourself when ordering. In this hookup guide, we will show you how ...



[User Guide: RTK Base Station](#)

Oct 12, 2025 · The ArduSimple RTK Base Station, powered by the Septentrio mosaic-X5 module, is designed to function as a Continuously Operating Reference Station (CORS) to provide high ...



[SparkFun RTK Reference Station Hookup Guide](#)

Antenna Connections
Microsd Card
Power Options
Mode Button
Reset Button
Status Led
Config ESP32
Config Ublox
Ethernet Port
Ublox SMA Connector
Before connecting your Reference Station to a power source, you're going to want to connect it to a couple of antennas. The rest of the RTK product family use a version of the ESP32-WROOM which has a built-in antenna. The Reference Station does it differently. You need to connect a 2.4GHz WiFi / BT antenna to the ESP32...See more on learn.sparkfun Xylem Analytics[PDF]

USV : RTK Base Station Check List Version 1.4.2023

Jan 4, 2023 · The RTK Surveyor has a built-in 1200mAh lithium polymer battery that will enable up to 5 hours of field use between charging. If more time is needed, a common USB power ...

[RTK Base Station: What Is It? How to Build It?](#)

Explore the benefits of an RTK Base Station for precision farming and surveying. Learn how the FJD V1 Base Station delivers centimeter-level ...



[How to Build a DIY GNSS RTK Base Station for ...](#)

In this guide, you will learn how to build your own affordable GNSS RTK base station for oncoy. This station uses an ESP32 microcontroller and a ...



[How to use the D-RTK 2 Mobile Station?](#)

Power on the remote controller. initiate the mobile station linking process to link the RC with the D-RTK2 mobile station via the DJI flight controller mobile app such as DJI Pilot, MG, GS Pro ...



[SparkFun RTK Reference Station Hookup Guide](#)

The RTK Reference Station comes with everything you need to get up and running. Our kit includes: Cased Reference Station L1/L2/L5 GNSS ...





[Step-by-Step Guide to Setting Up an RTK Base Station](#)

Jun 5, 2025 · Follow our detailed guide to correctly set up an RTK base station for accurate surveying. Simplify your workflow with expert tips and best practices.



[Base station operation guidelines](#)

Oct 23, 2025 · Base station operation guidelines
This topic introduces the concept of base station operation, provides information to help you identify good setup locations, describes best ...

[Build Your Own RTK Base Station? , Point One ...](#)

Dec 14, 2023 · Learn everything there is to know about how to build your own RTK base station- and whether it's really worth it.



[How to Set Up Your Own RTK Base Station Step-by-Step Guide](#)

Sep 27, 2025 · Set up RTK base station from scratch. This guide covers gear, setup steps, GNSS configuration, tips to ensure stable corrections for high-precision surveying.



[Wireless GNSS RTK Rover and Base Set](#)

The main boards used in the Base and Rover stations are identical. The bill of materials for the board is detailed in BOM_v1.txt. The peripheral block ...



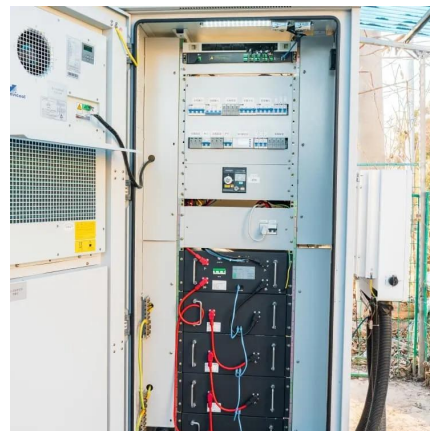
[USV : RTK Base Station Check List Version 1.4.2023](#)

Jan 4, 2023 · The RTK Surveyor has a built-in 1200mAh lithium polymer battery that will enable up to 5 hours of field use between charging. If more time is needed, a common USB power ...

[Step-by-Step Guide to Setting Up an RTK](#)

...

Jun 5, 2025 · Follow our detailed guide to correctly set up an RTK base station for accurate surveying. Simplify your workflow with expert tips and ...



D-RTK 2

Jun 21, 2023 · The D-RTK 2 High Precision GNSS Mobile Station is a high-precision satellite signal receiver that supports four global satellite navigation systems: GPS, BEIDOU, ...



[SparkFun RTK Reference Station Hookup Guide](#)

The RTK Reference Station comes with everything you need to get up and running. Our kit includes: Cased Reference Station L1/L2/L5 GNSS Surveying Antenna Reinforced RG58 TNC

...



[User Guide: RTK Base Station](#)

Oct 12, 2025 · The ArduSimple RTK Base Station, powered by the Septentrio mosaic-X5 module, is designed to function as a Continuously Operating

...

Contact Us

For technical specifications, project proposals, or partnership inquiries, please visit: <https://eiei.pl>

Scan QR Code for More Information



<https://eiei.pl>