

How to connect batteries to the battery cabinet





Overview

How do I connect a battery cabinet to a power system?

Procedure 1. Furnished with the battery cabinet are battery disconnect circuit breaker alarm lead assemblies. Refer to the power system installation manual to use these alarm leads to connect the battery cabinet battery disconnect circuit breaker alarm into the power system alarm circuits.

How do I put the batteries in the battery swapping cabinet?

Here is the complete guide on how to put the batteries in the battery swapping cabinet with a hard connection, step by step: Use the Tycorun Energy App to scan the qr code. Then you will hear the voice announcement "Please put the battery in the designated slots." The battery is returned successfully.

How do you put a 4th Battery in a cabinet?

Place another inner battery spacer next to the third battery. 9. Set fourth battery in cabinet (being careful of the door fastener tabs hanging down) and attach the other end of the fast-on lugged cable to the negative terminal on the third battery (fast-on terminal).

How many battery cabinets can be connected together?

The battery cabinet is designed to be daisy-chained together with additional battery cabinets. There is no limit to the number of battery cabinets that can be connected together. However, a maximum system current of 30 A should be maintained regardless of the number of interconnected battery cabinets. Procedure NOTE! Refer to Figure 7



How to connect batteries to the battery cabinet



[How to connect batteries in a battery box?](#)

Dec 3, 2025 · Conclusion Connecting batteries in a battery box is a process that requires careful planning and execution. By understanding the different connection methods, following the step ...

[How to Put Batteries in Correctly: AA, AAA, 9V, & More](#)

Overview
Installing AA, AAA, C, and D Batteries
Putting in a 9-Volt Battery
Inserting Coin and Button Batteries
Locating the Battery Compartment
Your new TV is all plugged in and ready to go when you realize the remote doesn't have batteri...
For AA, AAA, C, and D batteries, slide the flat, negative end of the battery against the spring onto the device. Then, push the raised, positive end into the flat side of the compartment.
For a 9-Volt battery, hold it at a 30° angle to line it up with the connector snaps. Press it into th...
For coin or button batteries, place the positive side facing up unless otherwise directed.
See more on wikihow
tycorunenergy



Step By Step Instructions for How To Put Batteries In

May 8, 2025 · This article will guide you step by step on how to put batteries in properly, how to check the positive (+) and negative (-) ends, and how to follow the correct process based on ...

[How to do UPS Battery Wiring?](#)



1 day ago · F. Before connecting the battery cables from the battery cabinet to the host, measure the battery voltage with a multimeter, which should ...

[How to put batteries in](#)

Apr 10, 2025 · Here is the complete guide on how to put the batteries in the battery swapping cabinet with a soft connection, step by step, refer to the video. (Please watch the video from ...



[How to do UPS Battery Wiring?](#)

1 day ago · F. Before connecting the battery cables from the battery cabinet to the host, measure the battery voltage with a multimeter, which should be 103.36V, and check if the positive and ...

[How To Connect Batteries In Series and ...](#)

Dec 1, 2025 · Learn how to configure batteries in series, parallel, or series and parallel. Complete battery configuration guide for increased power at ...



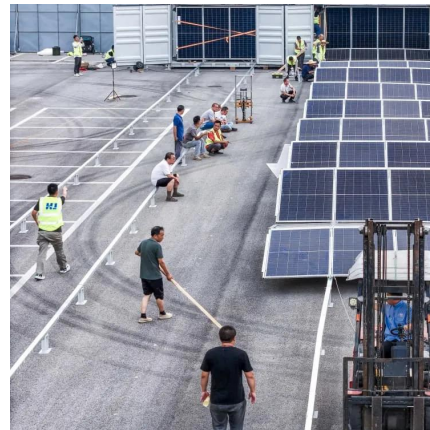


[-48 VDC Battery Cabinet Installation and User Manual ...](#)

Apr 21, 2022 · Connect the power system's battery cable terminated in an Anderson connector to the first battery cabinet's battery cable terminated in a mating Anderson connector.

[Step By Step Instructions for How To Put Batteries In](#)

May 8, 2025 · This article will guide you step by step on how to put batteries in properly, how to check the positive (+) and negative (-) ends, and how to follow the correct process based on ...



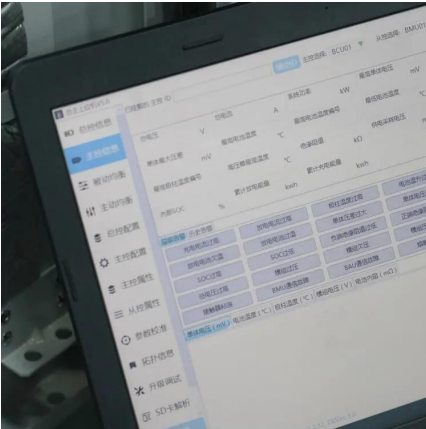
[How to Put Batteries in Correctly: AA, AAA, 9V, & More](#)

Dec 27, 2024 · For AA, AAA, C, and D batteries, slide the flat, negative end of the battery against the spring onto the device. Then, push the raised, positive end into the flat side of the ...

[How To Connect Batteries In Series and Parallel](#)

Dec 1, 2025 · Learn how to configure batteries in series, parallel, or series and parallel. Complete battery configuration guide for increased power at BatteryStuff !





[Install the Battery Modules in the Battery Cabinet](#)

Install the battery modules on the shelves from top to bottom. NOTE: Pay special attention to the location of type A and type B battery modules. Battery Configurations for Battery Cabinets with ...

[UBC80 Battery Cabinet Installation, Operation.](#)

Feb 3, 2025 · Review the battery system schematic that is located attached to the inside of a cabinet door to determine the number of batteries that need to be installed in the cabinet, the ...

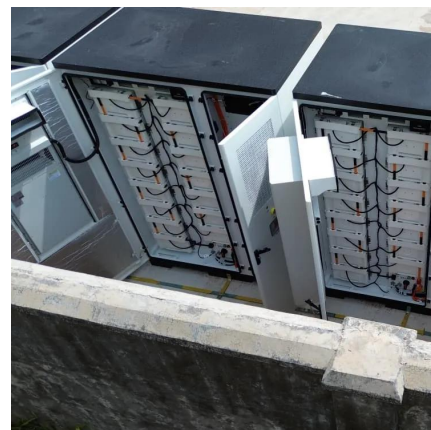


[How to connect batteries in a battery box?](#)

Dec 3, 2025 · Conclusion Connecting batteries in a battery box is a process that requires careful planning and execution. By understanding the ...

[How to Install and Set Up a Battery Storage Cabinet at Home](#)

Apr 19, 2025 · Understanding Battery Storage Cabinet Components and Benefits Key Components of a Battery Storage System A battery storage system is a sophisticated unit ...





Contact Us

For technical specifications, project proposals, or partnership inquiries, please visit:
<https://eiei.pl>

Scan QR Code for More Information



<https://eiei.pl>