

# How much power space is there for a mobile base station





## Overview

---

How many mobile devices can a base station serve?

Each base station can only serve a limited number of mobile devices at a time. As the number of mobile devices in a community grows, more base stations are needed. For that reason, more antennas are needed in such crowded locations as shopping malls where there are many mobile phone users.

Do mobile phones need a base station?

Mobile phones and other mobile devices require a network of base stations in order to function. The base station antennas transmit and receive RF (radio frequency) signals, or radio waves, to and from mobile phones near the base station. Without these radio waves, mobile communications would not be possible.

Why are base stations an inevitability?

These types of objects are an inevitability since they serve the purpose of providing signal transfer for data and voice between mobile mobiles. The idea of base stations is anchored in their function to provide coverage, capacity, and connectivity, hence allowing for extending the working capabilities of mobile phones and other radio gear.

How much power does an antenna use?

The antenna output power level is typically between 20 watts and a few hundred watts for an outdoor base station. Television transmitters, by comparison, have 10-1000 times higher output power than outdoor base stations. Antennas mounted indoors use very low power levels, typically around a few watts or less.



## How much power space is there for a mobile base station

---



### [Why does 5g base station consume so much ...](#)

Apr 3, 2025 · The power consumption of the 5G base station mainly comes from the AU module processing and conversion and high power ...

### [INVESTIGATORY ANALYSIS OF ENERGY ...](#)

Mar 27, 2025 · This study examines the energy requirements of a multi-tenant BTS, focusing on power consumption patterns, key energy ...



### **Mobile base station site as a virtual power plant for grid ...**

Mar 1, 2025 · Furthermore, it seeks to determine if the full activation time can meet the requirements of an FFR product. The system consists of a live mobile base station site with a ...



### [Power Consumption Modeling of 5G Multi-Carrier Base ...](#)

Jan 23, 2023 · However, there is still a need to understand the power consumption behavior of state-of-the-art base station architectures, such as multi-carrier active antenna units (AAUs), ...



### [How Much Power Does 5G Base Station Consume?](#)

Aug 26, 2023 · The Silent Energy Crisis in Mobile Networks Have you ever wondered how much energy our hyper-connected world is consuming? 5G base stations, the backbone of next-gen ...



### **INVESTIGATORY ANALYSIS OF ENERGY REQUIREMENT OF A MULTI-TENANT MOBILE**

Mar 27, 2025 · This study examines the energy requirements of a multi-tenant BTS, focusing on power consumption patterns, key energy-intensive components, and optimization strategies.



### **Table 1 Power consumption of the base station components ...**

In this paper, the energy efficiency of a femtocell base station is investigated and compared for various bit rates and for three different wireless technologies namely, mobile WiMAX, HSPA, ...





## ICNIRP , Base Stations

These provide limitations, expressed in terms of the Specific Absorption Rate (SAR), for the absorption of energy from RF EMF fields. Distinct SAR values apply to whole-body exposure, ...

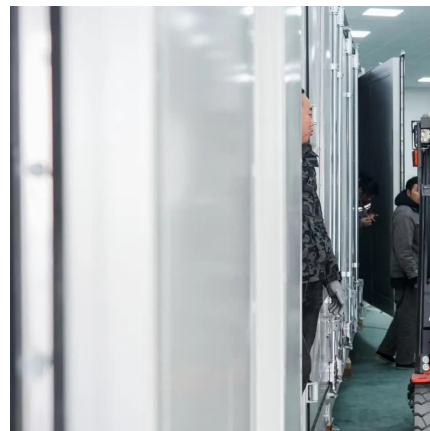


## Aerial Base Stations: Practical Considerations for Power ...

Mar 11, 2024 · Our findings provide valuable insights for researchers and telecom operators, facilitating effective cost planning by determining the number of ABSs and backup batteries ...

## **Base Stations**

Jul 23, 2025 · The present-day tele-space is incomplete without the base stations as these constitute an important part of the modern-day scheme of wireless communications. They are ...



## **Base Stations**

Jul 23, 2025 · The present-day tele-space is incomplete without the base stations as these constitute an important part of the modern-day scheme ...



## Table 1 Power consumption of the base

...

In this paper, the energy efficiency of a femtocell base station is investigated and compared for various bit rates and for three different wireless

...



## Base stations and networks

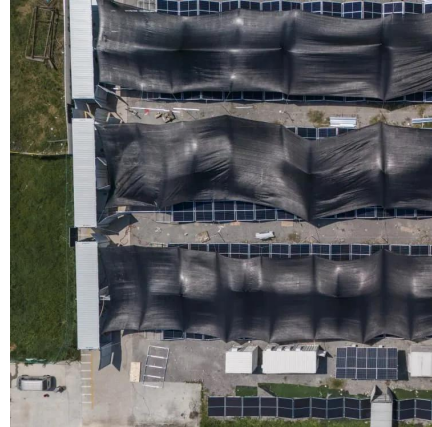
Base Stations Enable Mobile Communications  
Antennas Are Placed in Various Locations  
More Mobile Devices Means More Base Stations  
Base Station Output Power Is Low  
Exposure Limits Are Set by Independent Organizations  
Exposure Levels Are Much Lower Than The Limits  
Public Access Is Restricted Where Needed  
No Adverse Health Effects According to The Who  
The antenna output power level is typically between 10 and 100 watts for an outdoor base station. Television transmitters, by comparison, usually have a thousand times higher output power than outdoor base stations. Antennas mounted indoors have about the same power as mobile phones. See more on ericsson ICNIRP

## **ICNIRP , Base Stations**

These provide limitations, expressed in terms of the Specific Absorption Rate (SAR), for the absorption of energy from RF EMF fields. Distinct SAR values apply to whole-body exposure, ...

## Why does 5g base station consume so much power and how ...

Apr 3, 2025 · The power consumption of the 5G base station mainly comes from the AU module processing and conversion and high power-consuming high radio frequency signals, the ...



### Base stations and networks

5 days ago · Base station output power is relatively low The antenna output power level is typically between 20 watts and a few hundred watts for an outdoor base station. Television ...

## Contact Us

---

For technical specifications, project proposals, or partnership inquiries, please visit:  
<https://eiei.pl>

**Scan QR Code for More Information**



<https://eiei.pl>