

# How much power does the mobile base station have





## Overview

---

How do base stations affect mobile cellular network power consumption?

Base stations represent the main contributor to the energy consumption of a mobile cellular network. Since traffic load in mobile networks significantly varies during a working or weekend day, it is important to quantify the influence of these variations on the base station power consumption.

What is the largest energy consumer in a base station?

The largest energy consumer in the BS is the power amplifier, which has a share of around 65% of the total energy consumption . Of the other base station elements, significant energy consumers are: air conditioning (17.5%), digital signal processing (10%) and AC/DC conversion elements (7.5%) .

Which base station elements consume the most energy?

Of the other base station elements, significant energy consumers are: air conditioning (17.5%), digital signal processing (10%) and AC/DC conversion elements (7.5%) . New research aimed at reducing energy consumption in the cellular access networks can be viewed in terms of three levels: component, link and network.

Is there a direct relationship between base station traffic load and power consumption?

The real data in terms of the power consumption and traffic load have been obtained from continuous measurements performed on a fully operated base station site. Measurements show the existence of a direct relationship between base station traffic load and power consumption.



## How much power does the mobile base station have



### Table 1 Power consumption of the base station components ...

In this paper, the energy efficiency of a femtocell base station is investigated and compared for various bit rates and for three different wireless technologies namely, mobile WiMAX, HSPA, ...

### Electric load characteristics analysis of 5G base stations in ...

Sep 22, 2022 · 5G base station (BS) is a fundamental part of 5th generation (5G) mobile networks. To meet the high requirements of the future mobile communication, 5G BS has ...



### [How Much Power Does 5G Base Station Consume? , Huijue ...](#)

Aug 26, 2023 · The Silent Energy Crisis in Mobile Networks Have you ever wondered how much energy our hyper-connected world is consuming? 5G base stations, the backbone of next-gen ...

### [What is 5G Energy Consumption?](#)

2 days ago · The 5G network is a dynamic system that consumes energy continually and responds to spikes in network activity. Over 70% of this energy is consumed by RAN ...



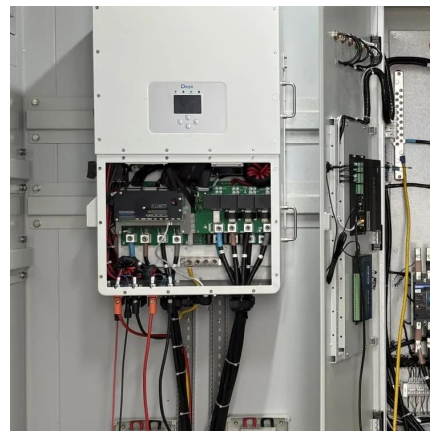
### [Table 1 Power consumption of the base ...](#)

In this paper, the energy efficiency of a femtocell base station is investigated and compared for various bit rates and for three different wireless ...



### [Why does 5g base station consume so much power and how ...](#)

Apr 3, 2025 · The power consumption of the 5G base station mainly comes from the AU module processing and conversion and high power-consuming high radio frequency signals, the ...



### **Mobile Base Station Energy Storage Principle: How It Keeps ...**

May 6, 2025 · Ever wondered how your phone stays connected during a blackout? Meet the unsung hero of modern connectivity - mobile base station energy storage systems. These ...





### [What is the Power Consumption of a 5G Base Station?](#)

Nov 15, 2024 · Compared to its predecessor, 4G, the energy demand from 5G base stations has massively grown owing to new technical requirements needed to support higher data rates ...



### **Measurements and Modelling of Base Station Power Consumption under Real**

Abstract Base stations represent the main contributor to the energy consumption of a mobile cellular network. Since traffic load in mobile networks significantly varies during a working or ...

### [ICNIRP , Base Stations](#)

The power of a base station varies (typically between 10 and 50 watts) depending on the area that needs to be covered and the number of calls processed. This is low compared to other ...



### [Base Station Energy Use in Dense Urban and Suburban ...](#)

In addition, measurements, and calculations for the actual and theoretical energy consumption of each equivalent base station were done, and an extrapolated energy intensity per square ...



### [Why does 5g base station consume so much ...](#)

Apr 3, 2025 · The power consumption of the 5G base station mainly comes from the AU module processing and conversion and high power ...



## Contact Us

---

For technical specifications, project proposals, or partnership inquiries, please visit:  
<https://eiei.pl>

### Scan QR Code for More Information



<https://eiei.pl>