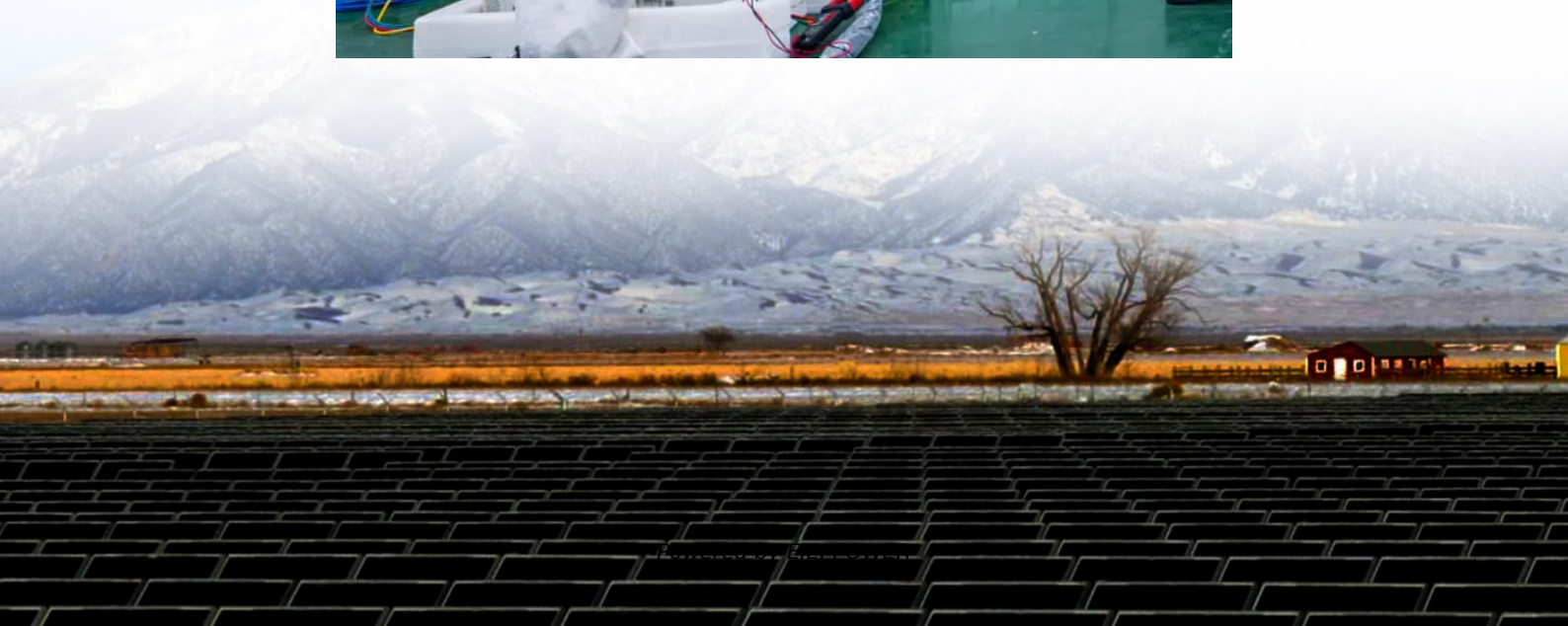


How many watts does a 12v inverter support





Overview

How many Watts should a 12V inverter use?

A quick rule is to divide watts by 10 for 12V systems or 20 for 24V systems. For more accuracy, divide the load by the actual battery voltage and adjust for inverter efficiency (typically 85%). This ensures you can correctly estimate battery drain and size your system safely.

How much power does a 12V inverter draw?

A 2000w 12v pure sine wave inverter draws power based only on its load. $\text{Current (Amps)} = \text{Load Watts} \div (\text{Battery Voltage} \times \text{Inverter Efficiency})$ Inverter efficiency is typically 85% (0.85). Example (12V system):.

Can a 12 volt battery run a 1000 watt inverter?

Avoid connecting in series unless you intend to raise the voltage to 24V, which would require a compatible 24V inverter. In summary, a single 12-volt battery can run a 1000-watt inverter, but how long it lasts depends heavily on the battery's capacity, health, and the inverter's efficiency.

Can a 12 volt car battery support a high power inverter?

Typically, a 12-volt car battery can support an inverter with a power range of about 150 watts to 1500 watts. Please note, however, that car batteries are not suitable for driving high power inverters for extended periods of time, which may cause damage to the battery.



How many watts does a 12v inverter support

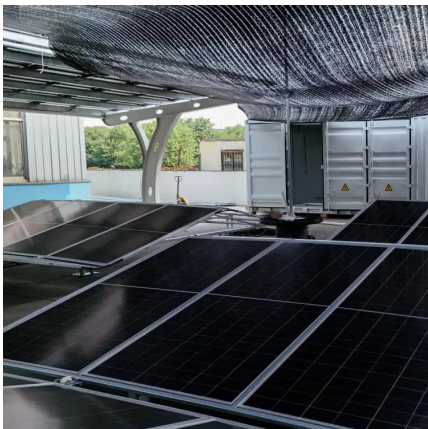


[How Big of an Inverter Can My Car Battery Handle?](#)

Mar 26, 2025 · When considering connecting an inverter to your car battery, the first question we need to clarify is: how much power can your car battery actually support an inverter? Typically, ...

[Can One 12 Volt Battery Run a 1000 Watt Inverter?](#)

Apr 29, 2025 · Yes, a single 12-volt battery can run a 1000-watt inverter, but the runtime depends on several factors such as the battery's capacity, the inverter's efficiency, and the load ...



[How Big of an Inverter Can My Car Battery ...](#)

Mar 26, 2025 · When considering connecting an inverter to your car battery, the first question we need to clarify is: how much power can your car ...

[Frequently Asked Questions about Inverters](#)

How Much Battery Capacity Do I Need with An Inverter?How Much Power Does An Inverter consume?Is There A Stand-By Switch on The Inverter?Can I Power A Computer with An

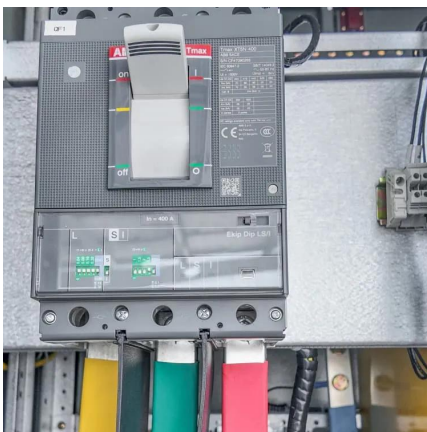


Inverter? Can A Microwave Be Powered with An Inverter? Are There Any Appliances That Cannot Be Powered by An Inverter? How Much Current Will An Inverter Draw from My Batteries? How Thick Should My Battery Cables be? Does An Inverter Need A Lot of Ventilation? Can An Inverter Be Used in Parallel with The Generator Or The Grid? Mastervolt sine wave inverters have an output efficiency of more than 92 %, which is the maximum that can be achieved with modern technology. If you connect an 850 W coffee maker to a Mass sine wave inverter, consumption will be 850 W divided by the onboard voltage of 12 volt, approx. 70 A. Of course, a coffee maker will only be in use for a short See more on mastervolt walkingsolar



How Many Amps Does a 100, 300, 500, 600, ...

Jun 20, 2023 · A 3000 Watt Inverter usually pulls around 294 Amps. A 4000 Watt Inverter commonly draws about 392.15 Amps. A 5000 Watt Inverter ...



[How much power does an inverter draw? - Help Centre](#)

The current draw from a 12V or 24V battery when running an inverter depends on the actual load, not the inverter size. A quick rule is to divide watts by 10 for 12V systems or 20 for 24V ...

[The Only Inverter Size Chart You'll Ever Need](#)

Sep 25, 2023 · We have created a comprehensive inverter size chart to help you select the correct inverter to power your ...



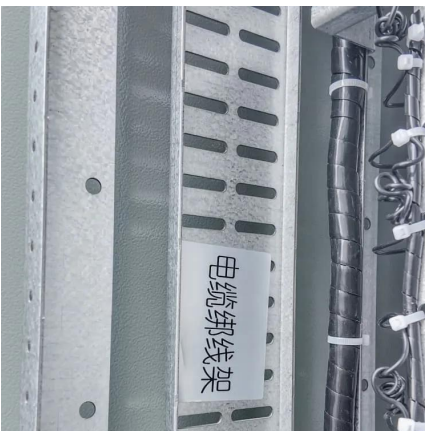


[What size inverter can you run off a car battery?](#)

Aug 11, 2025 · A typical 12-volt car battery can safely support an inverter ranging from about 150 watts up to 600 watts for regular use without harming the battery. While it is technically ...

[Frequently Asked Questions about Inverters](#)

Frequently Asked Questions about Inverters How much battery capacity do I need with an inverter? As a rule of thumb, the minimum required battery capacity for a 12-volt system is ...



[Inverter Current Calculator](#)

How to Use the Inverter Current Calculator To use the inverter current calculator, follow these steps: Input the power rating (in watts or kilowatts) of your inverter. Enter the input voltage of ...

[The Only Inverter Size Chart You'll Ever Need](#)

Sep 25, 2023 · We have created a comprehensive inverter size chart to help you select the correct inverter to power your appliances.





Inverter Calculator

Change values in the boxes with arrows and the calculator will adjust to show you other system specifications: Inverter Input Inverter Power Rating Inverter Output 12VDC 24VDC 48VDC ...

How Many Amps Does a 100, 300, 500, 600, 750, 1000, 1500, ...

Jun 20, 2023 · A 3000 Watt Inverter usually pulls around 294 Amps. A 4000 Watt Inverter commonly draws about 392.15 Amps. A 5000 Watt Inverter typically draws approximately 490 ...

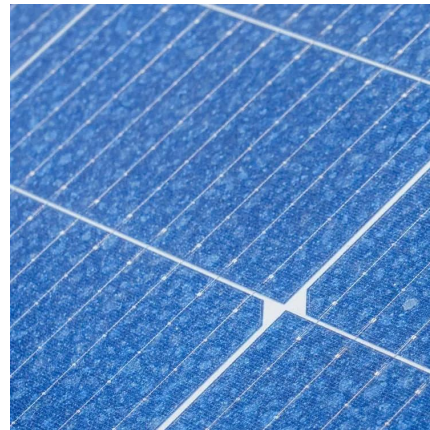


How Much Battery Capacity Do You Need With a 12V Inverter?

Jun 14, 2025 · Discover how to calculate the ideal battery capacity for a 12V inverter using simple math, practical examples, and money-saving tips for daily power.

Inverter Calculator

Change values in the boxes with arrows and the calculator will adjust to show you other system specifications: Inverter Input Inverter Power Rating ...





Contact Us

For technical specifications, project proposals, or partnership inquiries, please visit:
<https://eiei.pl>

Scan QR Code for More Information



<https://eiei.pl>