

How many specifications does the inverter kw have





Overview

The article provides an overview of inverter functions, key specifications, and common features found in inverter systems, along with an example of power calculations and inverter classification by power.

What do kW and kVA mean in inverter specifications?

kW refers to the real or usable power output of an inverter. kVA represents the total power capacity it can carry, including power lost in phase difference (reactive power). For example, an inverter rated at 10 kVA with a power factor of 0.8 can only deliver 8 kW of real power.

What are inverter specifications?

Specifications provide the values of operating parameters for a given inverter. Common specifications are discussed below. Some or all of the specifications usually appear on the inverter data sheet. Maximum AC output power This is the maximum power the inverter can supply to a load on a steady basis at a specified output voltage.

How much power does an inverter need?

It's important to note what this means: In order for an inverter to put out the rated amount of power, it will need to have a power input that exceeds the output. For example, an inverter with a rated output power of 5,000 W and a peak efficiency of 95% requires an input power of 5,263 W to operate at full power.

What is the power factor of a solar inverter?

Most hybrid and solar inverters operate at a power factor between 0.8 and 1.0. The power factor directly impacts how much usable energy (kW) you can get from your inverter. If your inverter has a power factor of 0.9, then a 10 kVA inverter will deliver only 9 kW of real output. This means the inverter can only handle 10.2 kW of actual load—not 12.



How many specifications does the inverter kw have

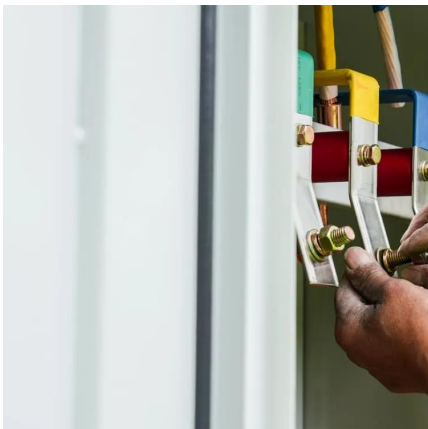


[Powerwall 3 DC System Sizing](#)

Sep 12, 2025 · Powerwall 3 can be configured as up to a 11.5 kW / 48 A AC rated inverter that can support up to a maximum DC system size of 20 ...

[Solar Inverter Specifications](#)

Sep 6, 2025 · The following specifications reflect Tesla Solar Inverter with Site Controller (Tesla P/N 1538000-45-y). For specifications on Tesla Solar Inverter without Site Controller, see ...

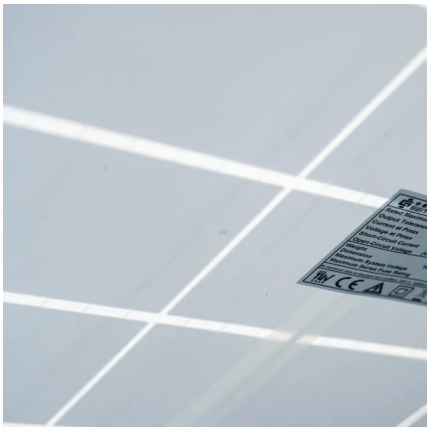


[Understanding the 10000W Inverter - Power, Performance, ...](#)

Apr 23, 2025 · Explore the power of a 10000W inverter, learn the difference between kilowatt vs kVA, and find the best setup for your home or solar system.

[Inverter Specifications and Data Sheet](#)

2 days ago · The article provides an overview of inverter functions, key specifications, and common features found in inverter systems, along with ...



[Understanding Inverter Power Ratings: kW vs kVA Explained](#)

4 days ago · When I first started dealing with inverter specs, I often saw two values-- kW and kVA. At first, they seemed interchangeable. But later I realized they mean very different things, ...

[Inverter Specifications: The difference ...](#)

1 day ago · In inverter specifications VA refers to Volts x Amps. Volts x Amps is the electrical formula that gives you Watts. Since Watts = Volts x Amps ...



3KW, 6KW, 8KW, and Beyond: Choosing the Right Hybrid Inverter

Apr 3, 2025 · Choose the perfect hybrid inverter--3KW, 6KW, 8KW, or higher--for your energy needs. Compare features, efficiency, and scalability in this guide.



[Inverter Specifications and Data Sheet](#)

2 days ago · The article provides an overview of inverter functions, key specifications, and common features found in inverter systems, along with an example of power calculations and ...

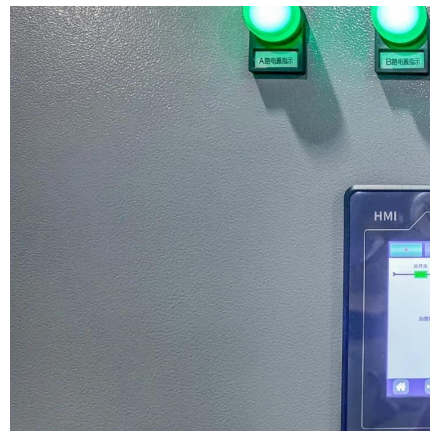


[3KW, 6KW, 8KW, and Beyond: Choosing the ...](#)

Apr 3, 2025 · Choose the perfect hybrid inverter--3KW, 6KW, 8KW, or higher--for your energy needs. Compare features, efficiency, and ...

[calculate inverter size for solar + Sizing Formula](#)

Jul 27, 2025 · How do I determine the right size of inverter for my solar installation? To calculate the right inverter size, assess your daily energy ...



Do you know the difference between the key parameters of inverter KW

Jul 23, 2025 · The parameter marking of the grid-connected inverter must adapt to the grid specifications and must have the ability to adjust the power factor (usually 0.9 leading to 0.9 ...



[How to Read Solar Inverter Specifications](#)

Nov 17, 2023 · Solar inverter specifications include input and output specs highlighting voltage, power, efficiency, ...



[The Only Inverter Size Chart You'll Ever Need](#)

Sep 25, 2023 · We have created a comprehensive inverter size chart to help you select the correct inverter to power your appliances.

[How to Read Solar Inverter Specifications](#)

Nov 17, 2023 · Solar inverter specifications include input and output specs highlighting voltage, power, efficiency, protection, and safety features.



[How Many Solar Panels Can I Connect to My ...](#)

With a 5kw inverter, you can have up to 6.5 kw of solar power. How to Calculate Inverter Solar Panel Capacity There are many ways to calculate ...



[The Only Inverter Size Chart You'll Ever Need](#)

Sep 25, 2023 · We have created a comprehensive inverter size chart to help you select the correct inverter to power your appliances.

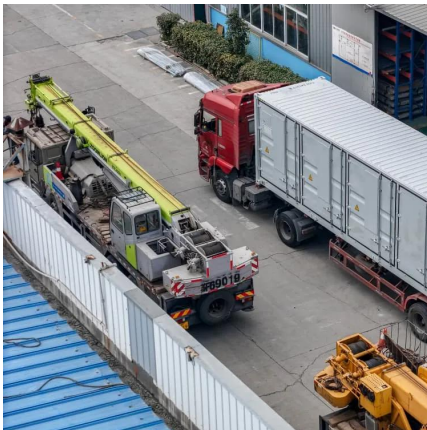
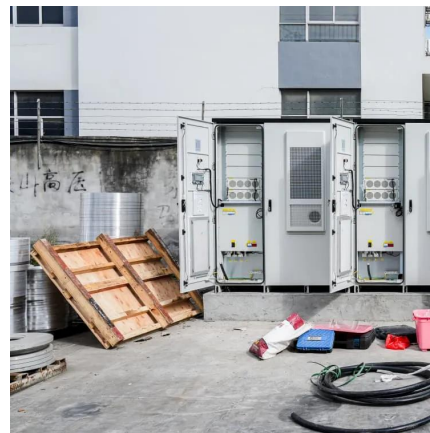


[How Many Batteries do I Need for Hybrid Inverter 10KW?](#)

Nov 23, 2024 · A hybrid inverter 10kw is a powerful solution for those looking to maximize the benefits of solar energy while achieving energy independence.

[Inverter Size Calculator - self2solar](#)

Feb 20, 2025 · Determining the Inverter Size to Match the Solar Panel Array Determining the correct inverter size depends on your solar array's ...



[How To Read And Interpret An Inverter Specification](#)

4 days ago · Inverter specifications are technical information that describes an inverter's capabilities, characteristics, and limitations. They guide users in choosing an inverter that suits ...



[What is the Inverter kVA Rating, and the Top ...](#)

3 days ago · In this article, you will get in-depth information about the kVA rating inverter, its application, the difference between KVA vs KW, the top ...



[Understanding Inverter Power Ratings: kW vs ...](#)

4 days ago · When I first started dealing with inverter specs, I often saw two values-- kW and kVA. At first, they seemed interchangeable. But later I ...

[Definitions of Inverter Specifications](#)

Spec sheet: A PDF of the manufacturer's spec sheet for the inverter model. Spec sheet pages: Used to specify which pages should be included in permit plan sets featuring the inverter. ...



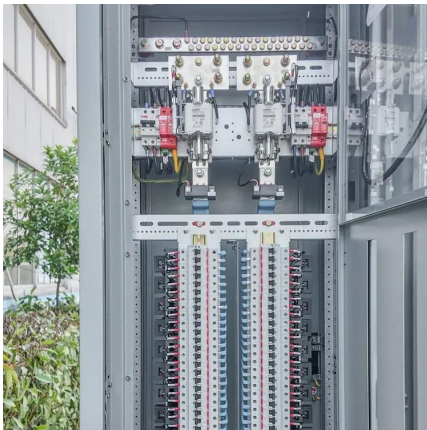
[The Only Inverter Size Chart You'll Ever Need](#)

Sep 25, 2023 · We have created a comprehensive inverter size chart to help you select the correct inverter to power your ...



Tesla Powerwall and Inverter Review

Nov 16, 2023 · In-depth review of the Tesla Powerwall 2, Powerwall Plus battery and unique Tesla solar inverter. With 13.5kWh storage capacity, ...



MoDel sPeCiFiCations of inVerter

Jun 9, 2016 · (a) Three phase PCU/ inverter shall be used with each power plant system (10 kW and/or above) but in case of less than 10 kW single phase inverter can be used. (b) ...

How To Read And Interpret An Inverter ...

4 days ago · Inverter specifications are technical information that describes an inverter's capabilities, characteristics, and limitations. They guide ...



Contact Us

For technical specifications, project proposals, or partnership inquiries, please visit:
<https://eiei.pl>



Scan QR Code for More Information



<https://eiei.pl>