

# How many kw does the inverter have





## Overview

---

How many Watts Does a kilowatt inverter put out?

Both of these terms basically point to the same thing—a beefy inverter that can constantly put out 10,000 watts, or 10 kilowatts. That's plenty of power to run a bunch of medium to large appliances without breaking a sweat.

How big should a solar inverter be?

Generally, it's recommended to size the inverter to 80-100% of the DC system's rated capacity. Before determine the inverter size, the most important thing is to calculate your average daily power consumption (kWh) and calculate your solar panel array size to match your power consumption. You could follow our to make this estimation.

How much power does a 10000w inverter produce?

$kW = kVA \times \text{Power Factor}$  Let's say you have a 10000W inverter and your system's power factor is 0.9:  $kVA = 10000W / 0.9 \approx 11.1 \text{ kVA}$  This means your inverter must be capable of handling approximately 11.1 kVA to deliver 10 kW of real power in that scenario.

How many Watts Does a solar inverter use?

Depending on where they fall in that band and the size of their solar array, they will likely use a 3, 5, or 10kW inverter. You also need to consider surge watts and voltage drop. Surge watts are the extra power required to start appliances that have motors, such as refrigerators and air conditioners.



## How many kw does the inverter have

---



### [Understanding Inverter Power Ratings: kW vs ...](#)

4 days ago · kW (kilowatts) measures real power--what actually powers your appliances. kVA (kilovolt-amps) measures apparent power--the total ...

### [Solar Inverter Sizing Guide for Maximum Efficiency , Mingch](#)

Jun 27, 2025 · If you're looking for a reliable PV inverter sizing solution that grows with your energy needs, we deliver Hybrid Inverters. View Hybrid Inverter Products here. Frequently ...



### [How To Size A Solar Inverter in 3 Easy Steps](#)

What size solar inverter should you use for your system? In this guide we share how to correctly size a solar inverter in 3 steps.

### [Solar Inverter Sizing Guide for Maximum ...](#)

Jun 27, 2025 · If you're looking for a reliable PV inverter sizing solution that grows with your energy needs, we deliver Hybrid Inverters. View Hybrid ...



### [How to Determine the Right Inverter Sizes for ...](#)

Jan 27, 2025 · Choosing the correct inverter sizes is crucial. Discover how to calculate your power needs, understand the consequences of improper ...



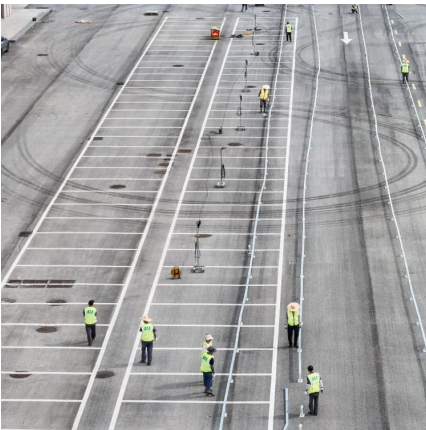
### [Inverter Size Calculator - self2solar](#)

Feb 20, 2025 · However, many systems use a DC-to-AC ratio greater than 1 (often 1.1 to 1.2) to maximize energy harvest despite inverter clipping losses. This means you could have a ...



### [3KW, 6KW, 8KW, and Beyond: Choosing the ...](#)

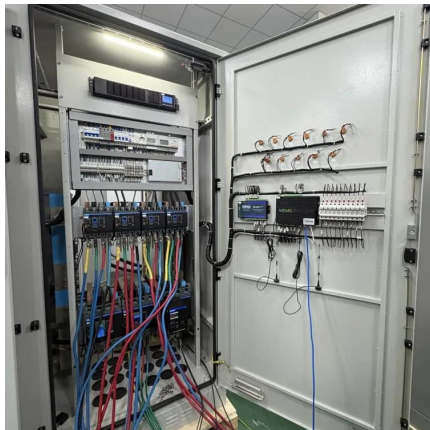
Apr 3, 2025 · Choose the perfect hybrid inverter--3KW, 6KW, 8KW, or higher--for your energy needs. Compare features, efficiency, and ...





## [Understanding the 10000W Inverter - Power, Performance. ...](#)

Apr 23, 2025 · What does "10000W inverter " or "10 kW inverter" mean? Both of these terms basically point to the same thing--a beefy inverter that can constantly put out 10,000 watts, or ...



## [The Only Inverter Size Chart You'll Ever Need](#)

How to Determine What Size Inverter I Need?What Are The Two Types of Power loads?Inverter Size ChartWhat Will A 300W Inverter Run?What Will A 500W Inverter Run?What Will A 700W Inverter Run?What Will A 1000W Inverter Run?What Will A 1500W Inverter Run?What Will A 2000W Inverter Run?What Will A 3000W Inverter Run?We have summarized the appliances that inverters from 300W to 3000W can run depending on their rated maximum power. Note to our readers: Use the above formulato determine how many appliances each inverter size can run simultaneously.See more on climatebiz self2solar

## **Inverter Size Calculator - self2solar**

Feb 20, 2025 · However, many systems use a DC-to-AC ratio greater than 1 (often 1.1 to 1.2) to maximize energy harvest despite inverter clipping ...

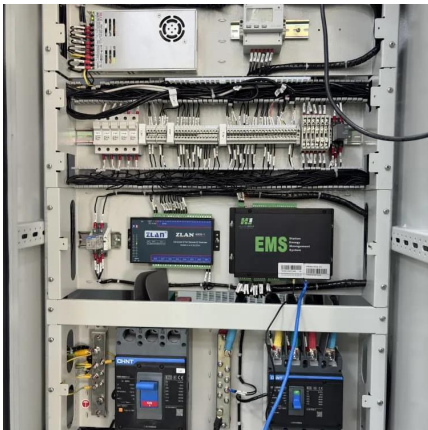
## [Understanding Inverter Power Ratings: kW vs kVA Explained](#)

4 days ago · kW (kilowatts) measures real power--what actually powers your appliances. kVA (kilovolt-amps) measures apparent power--the total power the inverter handles, including both ...



### 3KW, 6KW, 8KW, and Beyond: Choosing the Right Hybrid Inverter

Apr 3, 2025 · Choose the perfect hybrid inverter--3KW, 6KW, 8KW, or higher--for your energy needs. Compare features, efficiency, and scalability in this guide.



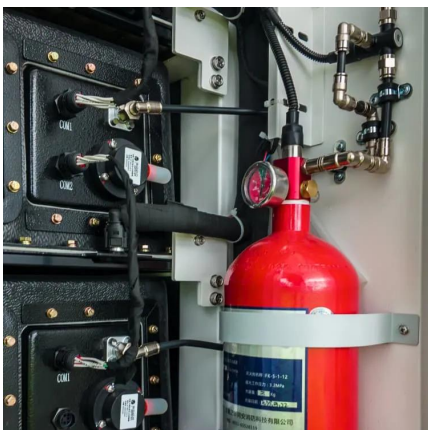
### [How to Choose the Right Size Solar Inverter: ...](#)

Jul 15, 2025 · Wondering what size solar inverter do I need for your solar system? This guide walks you through calculating inverter size based on ...



### [How to Size a Hybrid Inverter for Your Home Energy Needs?](#)

Jul 9, 2025 · Choosing the right hybrid inverter for your home is key to maximizing energy efficiency and getting the most from your solar and battery system. In this easy-to-understand ...





## How to Choose the Right Size Solar Inverter: Step-by-Step ...

Jul 15, 2025 · Wondering what size solar inverter do I need for your solar system? This guide walks you through calculating inverter size based on panel capacity, power usage, and safety ...

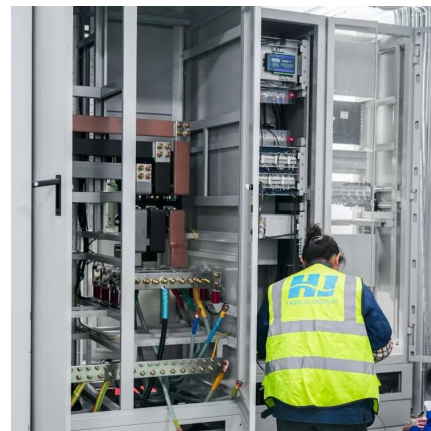


## [How to Determine the Right Inverter Sizes for Your Needs](#)

Jan 27, 2025 · Choosing the correct inverter sizes is crucial. Discover how to calculate your power needs, understand the consequences of improper sizing, and find the perfect VoltX inverter.

## [The Only Inverter Size Chart You'll Ever Need](#)

Sep 25, 2023 · We have created a comprehensive inverter size chart to help you select the correct inverter to power your appliances.



## Contact Us

---

For technical specifications, project proposals, or partnership inquiries, please visit:  
<https://eiei.pl>



## Scan QR Code for More Information



<https://eiei.pl>