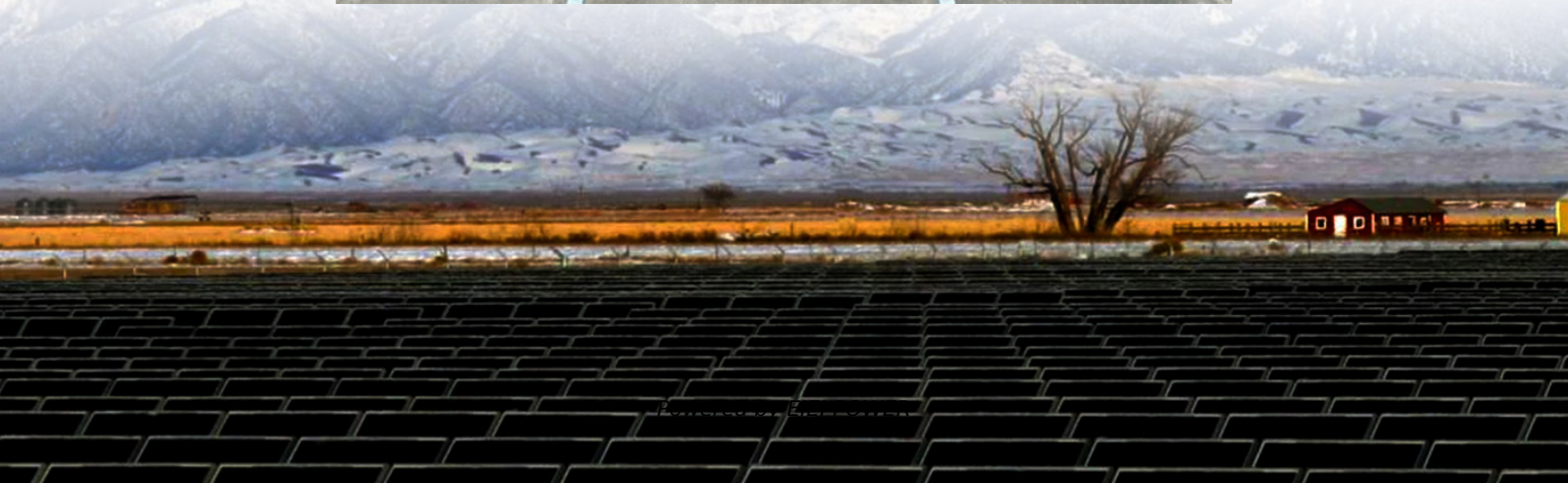


How is the power supply of the 5G base station in South Tarawa





Overview

What is a 5G base station?

Interesting Black Technology of 5G Radio Frequency 5G base station is the core equipment of 5G network, which provides wireless coverage and realizes wireless signal transmission between wired communication network and wireless terminal. The architecture and shape of base stations directly affect how 5G networks are deployed.

Does 5G increase power consumption compared to 4G?

Compared with 4G networks, 5G not only increases power consumption by more than three times, but also doubles the demand for 5G base stations due to the attenuation of coverage. Therefore, for operators, 5G base stations The high power consumption has even become the primary reason for restricting 5G network construction.

What is a 5G trough?

During service troughs, the power supply cannot sleep or shut off, making altering energy consumption in line with changing service levels and maximizing energy-saving impossible. 5G Power's innovative technology cuts the cost of 5G network evolution and enhances energy efficiency by around 9 percent.

What is green 5G power?

3. Green 5G Power focuses on improving energy and E2E efficiency at the component, site, network, and service level, consuming zero watt when there are zero bits. Traditional power systems only enable site-level efficiency and cannot coordinate with changes in service power consumption.



How is the power supply of the 5G base station in South Tarawa



[Building a Better -48 VDC Power Supply for 5G and Next](#)

Figure 3. A power supply for a 5G macro base station block diagram. Highlighted ICs The MAX15258 is a high voltage multiphase boost controller with an I²C digital interface designed ...

Key Technologies and Solutions for 5G Base Station Power Supply

Decoding the Power Drain: From Physics to Field Deployment The core challenge lies in nonlinear energy scaling. While 5G's spectral efficiency improves 8x over 4G, its energy-per ...



[Basic components of a 5G base station](#)

The 5G base station is composed of a power supply system and communication equipment [4], in addition to some auxiliary equipment such as air conditioning and lighting.



[Energy Management of Base Station in 5G and B5G: Revisited](#)

Apr 19, 2024 · Since mmWave base stations (gNodeB) are typically capable of radiating up to 200-400 meters in urban locality. Therefore, high density of these stations is required for ...



[Study on Power Feeding System for 5G Network](#)

Oct 24, 2019 · High Voltage Direct Current (HVDC) power supply HVDC systems are mainly used in telecommunication rooms and data centers, not in the Base station. With the increase of ...



5G Power: Creating a green grid that slashes costs, emissions ...

Jun 6, 2019 · Base stations with multiple frequencies will be a typical configuration in the 5G era. It's predicted that the proportion of sites with more than five frequency bands will increase from ...



[Complete Guide to 5G Base Station ...](#)

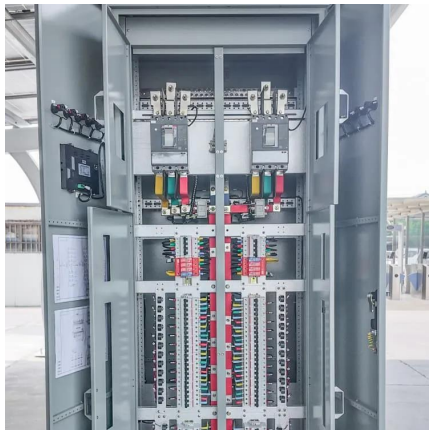
Nov 17, 2024 · Explore how 5G base stations are built--from site planning and cabinet installation to power systems and cooling solutions. Learn the ...





5G Base Station

Jun 26, 2023 · The main energy consumption of 5G base stations is concentrated in the four parts of base station, transmission, power supply ...

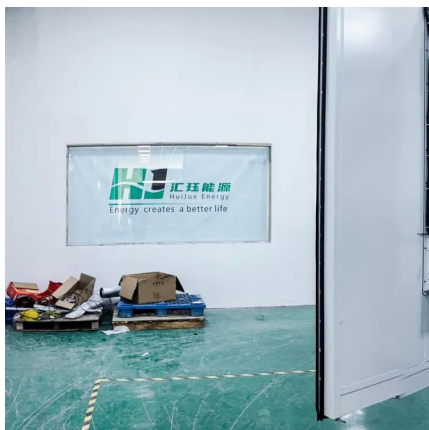
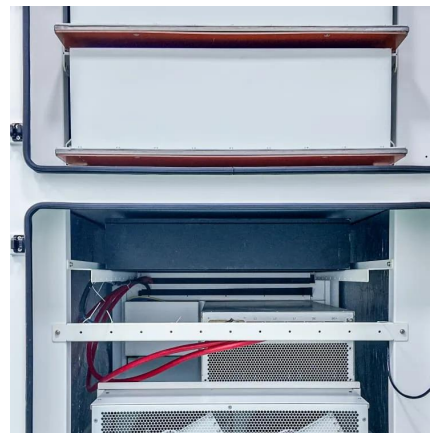


[Uninterrupted Power for 5G Base Stations: How the 51.2V ...](#)

Apr 14, 2025 · With 5G base stations consuming 3-4 times more energy than their 4G counterparts (GSMA 2023) and millions of new sites deployed annually, traditional power ...

[Basic components of a 5G base station](#)

The 5G base station is composed of a power supply system and communication equipment [4], in addition to some auxiliary equipment ...



5G Base Station

Jun 26, 2023 · The main energy consumption of 5G base stations is concentrated in the four parts of base station, transmission, power supply and computer room air conditioner, and the ...



Complete Guide to 5G Base Station Construction , Key Steps, ...

Nov 17, 2024 · Explore how 5G base stations are built--from site planning and cabinet installation to power systems and cooling solutions. Learn the essential components, technologies, and ...



[5G Power: Creating a green grid that slashes costs, ...](#)

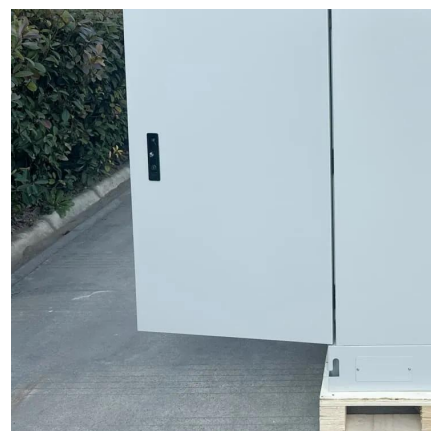
5G Construction: Energy and EmissionsSmart Functions with 5G Power5G Power Builds A Green Energy GridIn Hangzhou, the 5G Power solution deployed by China Tower and Huawei supports one cabinet for one site and boasts smart features like intelligent peak shaving, intelligent voltage boosting, and intelligent energy storage.See more on huawei analog

Building a Better -48 VDC Power Supply for ...

Figure 3. A power supply for a 5G macro base station block diagram. Highlighted ICs The MAX15258 is a high voltage multiphase boost ...

[5G macro base station power supply design strategy and ...](#)

Oct 24, 2024 · For macro base stations, Cheng Wentao of Infineon gave some suggestions on the optimization of primary and secondary power supplies. "In terms of primary power supply, we ...





Contact Us

For technical specifications, project proposals, or partnership inquiries, please visit:
<https://eiei.pl>

Scan QR Code for More Information



<https://eiei.pl>