

How big of an inverter can a 12v75ah be connected to





Overview

What size inverter for a 12V 200Ah battery?

For a 12V 200Ah battery (2.4kWh), a 2000W inverter is ideal. Formula: Inverter Wattage \leq (Battery Voltage \times Ah Rating \times 0.8). Factor in surge power needs but prioritize sustained loads. Always check the battery's max discharge rate (C-rate) to avoid exceeding safe limits. When sizing for 24V or 48V systems, recalculate using the higher voltage.

What voltage should a 12V inverter run on?

The input voltage of the inverter should match the battery voltage. (For example 12v battery for 12v inverter, 24v battery for 24v inverter and 48v battery for 48v inverter Summary What Will An Inverter Run & For How Long?

.

How much inverter power can a car battery support?

There is a theoretical limit to the amount of inverter power that can be supported by an automotive battery. Theoretically, the maximum supported inverter power can be calculated by multiplying the battery capacity (Ah) by the battery voltage (V) multiplied by the discharge multiplier (C-rate).

Can a 12 volt car battery support a high power inverter?

Typically, a 12-volt car battery can support an inverter with a power range of about 150 watts to 1500 watts. Please note, however, that car batteries are not suitable for driving high power inverters for extended periods of time, which may cause damage to the battery.



How big of an inverter can a 12v75ah be connected to



[How Big of an Inverter Can My Car Battery ...](#)

Mar 26, 2025 · Calculating inverter demand sizing There is a theoretical limit to the amount of inverter power that can be supported by an automotive ...

[Calculate Battery Size For Any Size Inverter \(Using Our ...](#)

Mar 3, 2023 · So I have made it easy for you, use the calculator below to calculate the battery size for 200 watt, 300 watt, 500 watt, 1000 watt, 2000 watt, 3000 watt, 5000-watt inverter



[How to Wire Solar Panels to Inverter: ...](#)

Mar 8, 2024 · How to Wire Solar Panels to Inverter: Connect them in series, parallel, or a combination of both, depending on the voltage & current output.

[Can a 12-volt 75Ah battery run a 1000 watts inverter?](#)

Nov 13, 2024 · 4. Reasonable selection of inverter usage scenarios If only a short period of high-power power supply is required, such as outdoor activities or short-term backup power, a



12V ...



[Can a Battery Be Too Big for an Inverter?](#)

Dec 12, 2023 · Yes, a battery can be too big for an inverter, leading to inefficiencies and potential safety issues. Oversized batteries may not discharge correctly or could exceed the inverter's ...



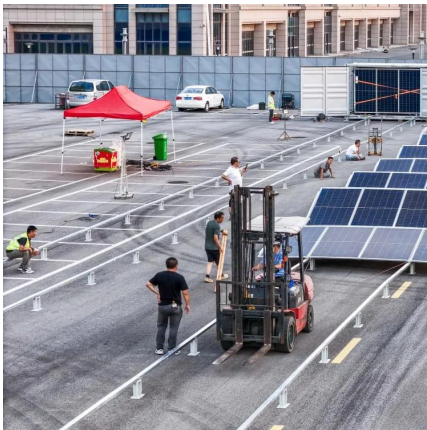
[How Big of an Inverter Can My Car Handle: ...](#)

Apr 1, 2023 · How Big of an Inverter Can My Car Handle: Understanding Your Car's Electrical System To determine the maximum size of an ...



[How Big of an Inverter Can My Car Handle](#)

Jun 20, 2023 · Conclusion The size of the inverter that a car can handle is determined by the amount of power that the car's battery can provide. The typical 12 volt car battery can provide ...





[Inverter Size Calculator](#)

The Inverter Size Calculator is a digital tool that allows you to determine the correct inverter size needed for a specific total wattage load, considering factors like safety margins and inverter ...

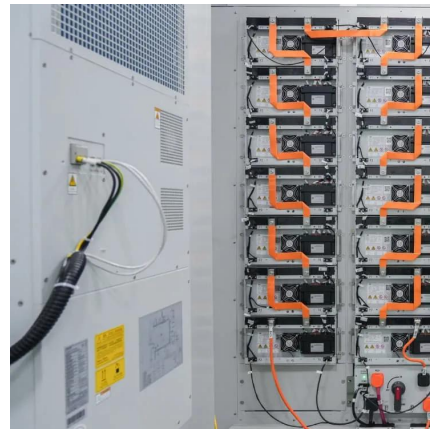


[Inverter for Car: Everything You Need to Know Before You ...](#)

Jun 17, 2025 · When you're on the road and need a way to power your laptop, charge your phone, or even brew a cup of coffee, an inverter for car becomes more than just a handy gadget--it's ...

How Big of an Inverter Can My Car Handle: Explained with Expert Tips

Apr 1, 2023 · How Big of an Inverter Can My Car Handle: Understanding Your Car's Electrical System To determine the ...



[Calculate Battery Size For Any Size Inverter ...](#)

Mar 3, 2023 · So I have made it easy for you, use the calculator below to calculate the battery size for 200 watt, 300 watt, 500 watt, 1000 watt, ...



[How to connect inverter to battery: a step-by ...](#)

Nov 20, 2024 · For instance, large gauge cables are necessary for high-power applications to prevent overheating and voltage drops, ensuring ...



[How Big of an Inverter Can My Car Battery Handle?](#)

Mar 26, 2025 · Calculating inverter demand sizing There is a theoretical limit to the amount of inverter power that can be supported by an automotive battery. Theoretically, the maximum ...

[How to Connect a Large or Small Inverter to a ...](#)

Nov 28, 2017 · by: Justin Gray This blog answers questions about which inverters can be powered by 12V DC accessory outlets (cigarette lighter ...



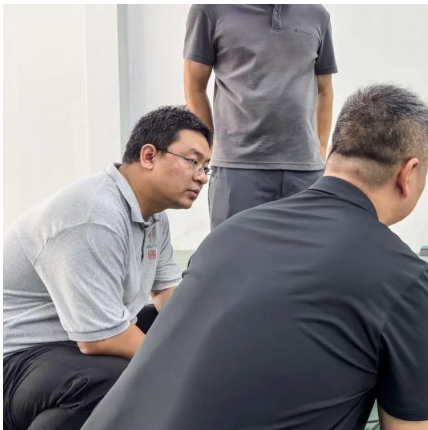
[How Many Batteries can Be Connected To An Inverter?](#)

An inverter is only as good as the power source. Discover how many batteries you can connect to an inverter and get the most out of it.



[How Big of an Inverter Can My Car Handle](#)

Jun 20, 2023 · Conclusion The size of the inverter that a car can handle is determined by the amount of power that the car's battery can provide. ...

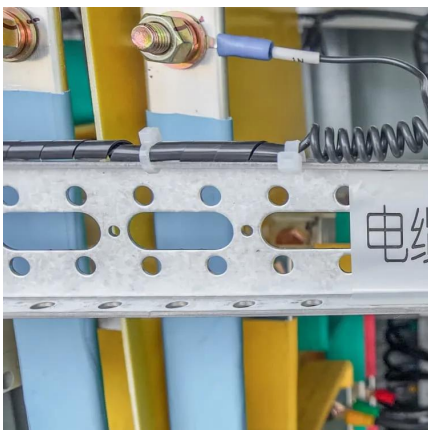


[How big of an inverter can a 12v75ah be connected to](#)

The number of batteries you can connect to an inverter cannot be more than 12 times the inverter charging current. A 20A charger can handle 240ah battery maximum.

[How Many Batteries can Be Connected To An ...](#)

An inverter is only as good as the power source. Discover how many batteries you can connect to an inverter and get the most out of it.



[Can a 12-volt 75Ah battery run a 1000 watts ...](#)

Nov 13, 2024 · 4. Reasonable selection of inverter usage scenarios If only a short period of high-power power supply is required, such as outdoor ...



What size inverter can you run off a car battery?

Aug 11, 2025 · A typical 12-volt car battery can safely support an inverter ranging from about 150 watts up to 600 watts for regular use without harming the battery. While it is technically ...



How to Connect a Large or Small Inverter to a Battery

Nov 28, 2017 · by: Justin Gray This blog answers questions about which inverters can be powered by 12V DC accessory outlets (cigarette lighter sockets) and which require wiring ...

Can an Inverter Be Too Big for Your Battery System?

How to Calculate the Right Inverter Size for Your Battery Match the inverter's continuous wattage rating to the battery's discharge capacity. For a 12V 200Ah battery (2.4kWh), a 2000W inverter ...



How Many Solar Panels Can I Connect to an Inverter? A Complete Guide

3 days ago · Learn how to optimize your solar power system by understanding how many solar panels can be connected to an ...



[How To Size A Solar Inverter in 3 Easy Steps](#)

What size solar inverter should you use for your system? In this guide we share how to correctly size a solar inverter in 3 steps.



Contact Us

For technical specifications, project proposals, or partnership inquiries, please visit:
<https://eiei.pl>

Scan QR Code for More Information



<https://eiei.pl>