

How big is the inverter from 12v to 220v





Overview

What is a simple 12V to 220V inverter?

Simple 12V to 220V inverters find widespread use in automotive applications, solar power systems, emergency backup power, and portable power solutions. Understanding load characteristics helps determine appropriate inverter specifications and ensures reliable operation.

What is a 12V inverter?

A 12V inverter is an electronic device that converts 12V DC power into 220V AC power. This type of inverter is typically used to convert automotive or other 12V DC power sources into standard household or industrial power to power a variety of devices. inverter.com provides inverters from 300w to 3000w.

What is a 12V 300 watt inverter?

12V 300-watt power inverter for sale. The modified sine wave inverter delivers 600-watt peak power and converts 12V DC from battery or car lighter to AC 110V or 220V household power. Come with a USB port, 12V to 110V inverter can be a universal outlet for fast-charging electronic devices.

What are the different solar inverter sizes?

Solar generators range in size from small generators for short camping trips to large off-grid power systems for a boat or house. Consequently, inverter sizes vary greatly. During our research, we discovered that most inverters range in size from 300 watts up to over 3000 watts. In this article, we guide you through the different inverter sizes.



How big is the inverter from 12v to 220v

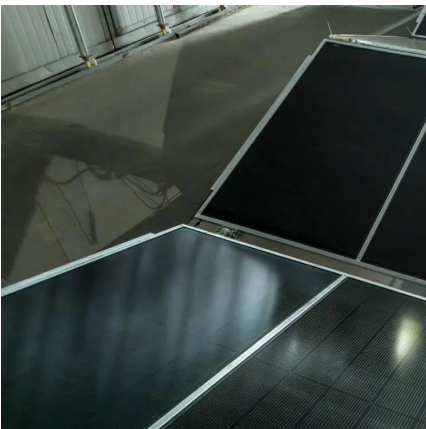


[Amazon : 12 V To 220 Volt Inverter](#)

High-Power 4000W DC to AC Power Inverter - 12V to 110V/220V Converter with Dual USB Ports, Universal AC Outlet, LED Display for Cars, Trucks, RVs, and Home Backup (Black, 220V) Add ...

[What is the size of an Inverter Solar 12v 220v?](#)

In conclusion, the size of an Inverter Solar 12V 220V is a multi - faceted concept that includes both physical dimensions and electrical capacity. Whether you need a small, compact inverter ...



[12v DC to 220v AC Portable Inverter : 7 Steps](#)

This article delves into the design and construction of a compact and portable 12V DC to 220V AC 50Hz inverter, highlighting its key features, components, and applications.

[The Only Inverter Size Chart You'll Ever Need](#)

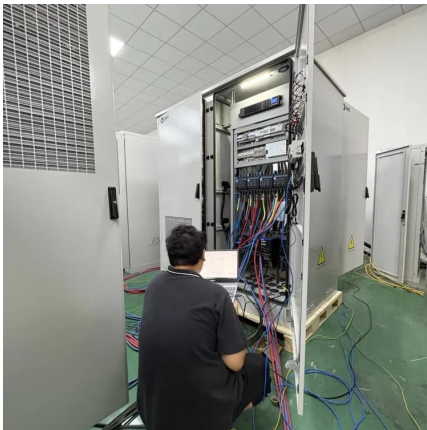
Sep 25, 2023 · We have created a comprehensive inverter size chart to help you select the correct inverter to power your appliances.



[How to Make Inverter 12v to 220v, 500W](#)

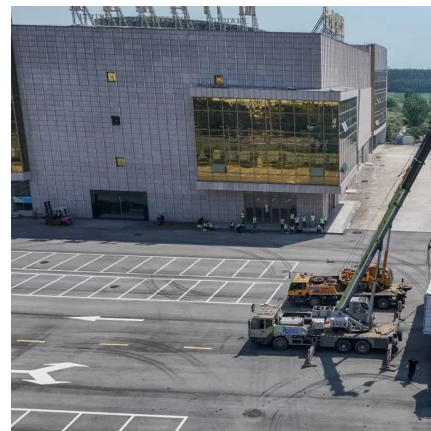
...

Feb 19, 2024 · How to Make Inverter 12v to 220v, 500W Using IRFZ44N. Inverter is an electrical device that converts direct current (DC) power ...



[12v DC to 220v AC Portable Inverter : 7 Steps](#)

This article delves into the design and construction of a compact and portable 12V DC to 220V AC 50Hz inverter, highlighting ...



[12v 1000w Inverter, 12v to 120v/220v Power ...](#)

1000 watt 12V power inverter for sale, input voltage DC 12V, continuous power 1000W and unload current less than 0.8A. Comes with a USB port, ...





Complete Guide to Building a DC to AC Inverter Circuit: 12V to 220V

1 day ago · A DC to AC inverter circuit transforms 12V DC input into 220V AC output, enabling you to power standard household devices from battery sources. This comprehensive guide will ...



[Build A 12V To 220V 5000W Inverter: DIY Guide](#)

Nov 18, 2025 · A 12V to 220V 5000W inverter can be a super handy device. Whether you're planning a camping trip, dealing with power outages, or just enjoy DIY projects, creating your ...

[What Will An Inverter Run & For How Long?](#)

Mar 3, 2023 · How long will a 12v battery last with an inverter? The next question which comes to mind that how long my inverter will last on load ...



[Best 12V to 220V Power Inverters for Cars, Homes, and ...](#)

Sep 6, 2025 · Power inverters convert DC power from a 12V battery source into usable AC power at 220V, making them essential for cars, RVs, and off-grid applications. This article reviews ...



[Best 12V to 220V Power Inverters for Cars, ...](#)

Sep 6, 2025 · Power inverters convert DC power from a 12V battery source into usable AC power at 220V, making them essential for cars, RVs, and ...

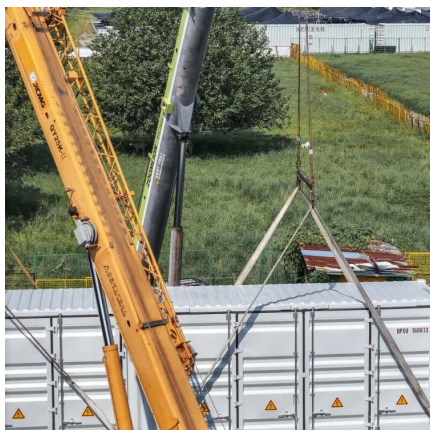


[How does a 12V to 220V Inverter Work?](#)

Jun 11, 2022 · Inverters (sometimes called power inverters) are just a class of electronic devices called power electronics that convert direct current into alternating current. Scientifically ...

[What Size Wire For Any Inverter: Inverter Wire ...](#)

Choosing the right cables for your inverter can be downright confusing. This guide helps you find the right size wire for any sized inverter.



[The Only Inverter Size Chart You'll Ever Need](#)

How to Determine What Size Inverter I Need?What Are The Two Types of Power loads?Inverter Size ChartWhat Will A 300W Inverter Run?What Will A 500W Inverter Run?What Will A 700W Inverter Run?What Will A 1000W Inverter Run?What Will A 1500W Inverter Run?What Will A 2000W Inverter Run?What Will A 3000W Inverter Run?Before we go any further, we highly recommend that you choose a pure sine wave inverter. This type of inverter delivers



high-quality electricity, similar to your utility company. This way, none of your appliances run the risk of being damaged. Now, when it comes to sizing your inverter, you always need to check your appliances' wattage and ensure t See more on climatebiz trowbridgeelectrical

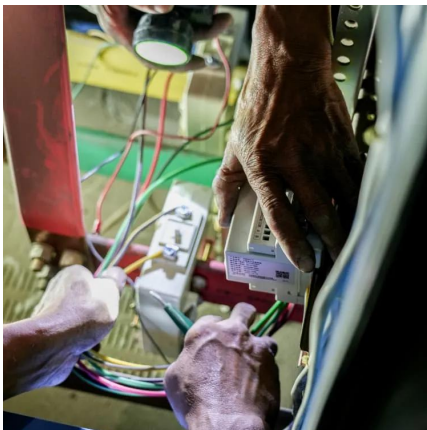
Best 12 Volt to 220 Volt Pure Sine Wave Inverters for Home

...

Sep 30, 2025 · Buying Guide for 12V to 220V Power Inverters Choosing the right 12 volt 220 volt inverter depends on a few critical factors to ensure your electronics receive safe and adequate ...

[How to Make 12v DC to 220v AC Inverter](#)

Apr 16, 2021 · How to Make 12v DC to 220v AC Inverter Hello, friends welcome to the new post. in this post, we will have a detailed look at How ...



Best 12 Volt to 220 Volt Pure Sine Wave Inverters for Home ...

Sep 30, 2025 · Buying Guide for 12V to 220V Power Inverters Choosing the right 12 volt 220 volt inverter depends on a few critical factors to ensure your electronics receive safe and adequate ...

12v Inverter, 12v DC to 110v/220v AC Power Inverter , inverter...

A 12V inverter is an electronic device that converts 12V DC power into 220V AC power. This type of inverter is typically used to convert



automotive or other 12V DC power sources into standard ...



[How to Choose the Best 12V to 220V Inverter for Your Needs](#)

Nov 24, 2025 · How to Choose a 12V 220V Inverter Follow this step-by-step process to select the optimal inverter: Determine Total Load: Add up the wattage of all devices you plan to run ...

[Complete Guide to Building a DC to AC ...](#)

1 day ago · A DC to AC inverter circuit transforms 12V DC input into 220V AC output, enabling you to power standard household devices from battery ...



[12v To 220v Inverter Circuit Diagram](#)

Oct 11, 2020 · The 12v to 220v inverter circuit diagram is essential for understanding how to build an inverter that will safely and efficiently convert a 12v DC input voltage to a 220v AC output ...



Contact Us

For technical specifications, project proposals, or partnership inquiries, please visit:
<https://eiei.pl>

Scan QR Code for More Information



<https://eiei.pl>